

**SeaPress**

**Submittal Package**



# Index

1	Product group description _____	3
2	Certifications _____	4
3	Z-dimensions _____	5
3.1	Model number directory _____	17
3.2	Article number directory _____	18
4	Legal notices _____	19
5	Imprint _____	20

## Product group description

Viega LLC offers the Viega SeaPress system for marine and industrial pipe joining applications. The Viega SeaPress system, in metric sizes, can be used in a variety of freshwater and seawater applications. The Viega SeaPress system is a 90:10 copper nickel alloy that is specifically designed to stand up to the harsh environments of the sea. It is the only metric copper nickel press fitting with a double-sided press connection, making it the strongest press connection on the market.

### Features and Benefits

No fire watches, hot work permits or chemist required

Only Viega offers press rings for working in tight areas

Makes secure press connections in sizes ranging from 15 mm to 108 mm in a matter of seconds

Installations are completed with a handheld press tool

Copper nickel alloy (CuNi 90:10) well-suited for marine environments and systems

Complies with DIN 86019 and with a factory standard governing the accuracy of dimensions and surface quality

Compatible with existing press tools

Backed by limited written warranty

SeaPress product stocked in North America and ready to ship

### Type Approvals

ABS: American Bureau of Shipping Type Approval

ASTM F3226: Standard Specification for Metallic Press-Connect Fittings for Piping and Tubing Systems

LR: Lloyd's Register Type Approval

BV: Bureau Veritas Type Approval

DNV GL: Det Norske Veritas Germanischer Lloyd Type Approval

RINA: Registro Italiano Navale








United States Coast Guard Acceptance Letter 2019-3650

Naval Sea Systems Command (NAVSEA)

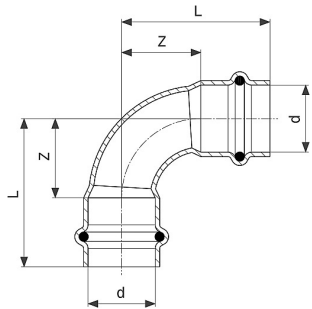
### Note

Products within this section meet various codes, standards, listings and certifications. Please refer to the most up-to-date Tech Data sheets relevant to the product or to the listing agency's official record.

## Certifications

	<p><b>Bureau Veritas Type Approval Certificate</b> Seapress</p>
	<p><b>CCS Certificate of Type Approval</b> Sanpress Inox, Seapress, Profipress</p>
	<p><b>Class NK Type Approval Certificate</b> Seapress, Seapress XL, Profipress and Sanpress Inox</p>
	<p><b>DNV GL Type Approval Certificate</b> Seapress, - XL, Profipress, -XL, Sanpress, - XL, Sanpress Inox, -XL</p>
	<p><b>IRS Type Approval Certificate</b> Seapress, Sanpress, Sanpress Inox, Profipress</p>
	<p><b>Lloyd's Register Type Approval Certificate</b> Seapress</p>
	<p><b>RINA Type Approval Certificate</b> Seapress and Seapress XL</p>

## Z-dimensions



### SeaPress 90° elbow

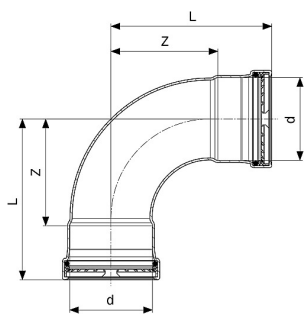
- CuNiFe 90/10
- Press connections

#### Components

EPDM sealing elements

#### Model 0316

Part No	Z [in]	L [in]
453 169	0.71	1.57
453 176	1.02	1.93
453 183	1.34	2.28
453 190	1.3	2.32
453 206	1.97	3.39
453 213	2.56	4.13



### SeaPress XL 90° elbow

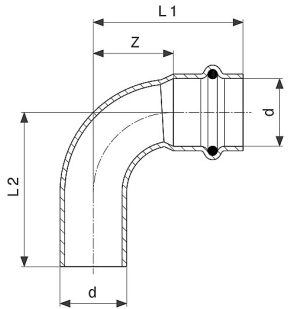
- CuNiFe 90/10
- Press connections

#### Components

EPDM sealing elements, grip rings, separator rings

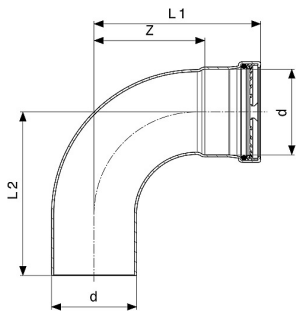
#### Model 0316XL

Part No	Z [in]	L [in]
556 570	3.9	5.87
556 563	4.53	6.5
556 556	5.43	7.8



**SeaPress 90° elbow**  
 - CuNiFe 90/10  
 - Press connection, street  
**Components**  
 EPDM sealing element  
**Model 0316.1**

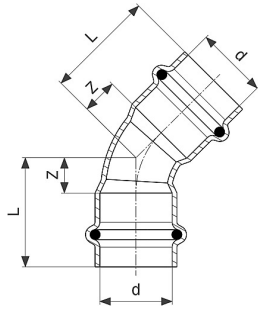
Part No	Z [in]	L1 [in]	L2 [in]
<b>453 220</b>	0.71	1.57	1.65
<b>453 237</b>	1.02	1.93	2.01
<b>453 244</b>	1.34	2.28	2.36
<b>453 657</b>	1.3	2.32	2.48
<b>453 664</b>	1.97	3.39	3.54
<b>453 671</b>	2.56	4.13	4.21



**SeaPress XL 90° elbow**  
 - CuNiFe 90/10  
 - Press connection, street  
**Components**  
 EPDM sealing element  
**Model 0316.1XL**

Part No	P	FTG	Z [in]	L1 [in]	L2 [in]
<b>556 525</b>	76.1	76.1	3.9	5.87	5.79
<b>556 532</b>	88.9	88.9	4.53	6.5	6.38
<b>556 549</b>	108.0	108.0	5.43	7.8	7.68

FTG = Soldered fitting connection


**SeaPress 45° elbow**

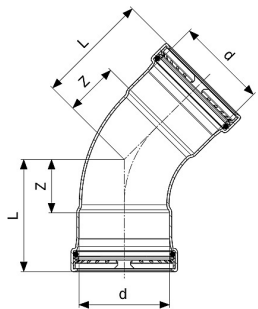
- CuNiFe 90/10
- Press connections

**Components**

EPDM sealing elements

**Model 0326**

Part No	Z [in]	L [in]
453 886	0.31	1.18
453 893	0.43	1.34
453 909	0.55	1.5
453 916	0.67	1.69
453 923	0.83	2.24
453 930	1.06	2.64


**SeaPress XL 45° elbow**

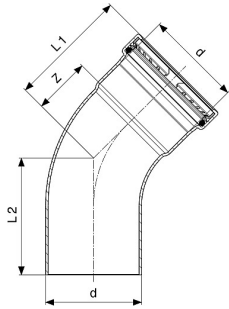
- CuNiFe 90/10
- Press connections

**Components**

EPDM sealing elements

**Model 0326XL**

Part No	Z [in]	L [in]
556 617	1.81	3.78
556 624	2.05	4.02
556 631	2.4	4.76


**SeaPress XL 45° elbow**

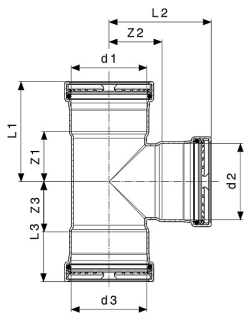
- CuNiFe 90/10
- Press connection, street

**Components**

EPDM sealing element, grip ring, separator ring

**Model 0326.1XL**

Part No	Z [in]	L1 [in]	L2 [in]
<b>556 587</b>	1.81	3.78	3.66
<b>556 594</b>	2.05	4.02	3.9
<b>556 600</b>	2.4	4.76	4.69


**SeaPress tee**

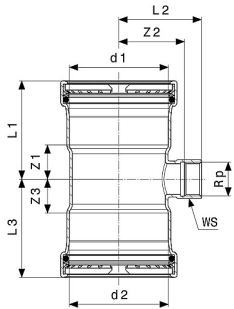
- CuNiFe 90/10
- Press connections

**Components**

EPDM sealing elements

**Model 0318**

Part No	Z1 [in]	Z2 [in]	Z3 [in]	L1 [in]	L2 [in]	L3 [in]
<b>453 473</b>	0.75	0.43	0.75	1.61	1.3	1.61
<b>453 480</b>	0.87	0.59	0.87	1.77	1.5	1.77
<b>453 497</b>	0.94	0.75	0.94	1.89	1.69	1.89
<b>453 503</b>	1.02	0.87	1.02	2.05	1.89	2.05
<b>453 534</b>	0.87	1.14	0.87	2.28	2.17	2.28
<b>453 510</b>	1.14	1.14	1.14	2.56	2.56	2.56
<b>453 541</b>	1.02	1.38	1.02	2.68	2.4	2.68
<b>453 558</b>	1.14	1.38	1.14	2.72	2.8	2.72
<b>453 527</b>	1.38	1.38	1.38	2.95	2.95	2.95


**SeaPress tee**

- CuNiFe 90/10
- Press connections, Rp-thread

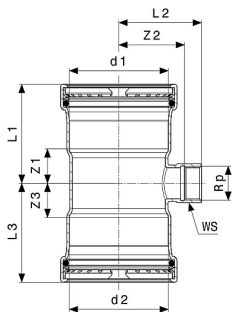
**Components**

EPDM sealing elements, polygon

**Model 0317.2**

Part No	Rp	Z1 [in]	Z2 [in]	Z3 [in]	L1 [in]	L2 [in]	L3 [in]	WS [in]
<b>453 749</b>	$\frac{3}{4}$	0.79	1.42	0.79	1.81	1.85	1.81	1.18
<b>453 756</b>	$\frac{3}{4}$	0.67	1.65	0.67	2.09	2.09	2.09	1.18
<b>453 763</b>	$\frac{3}{4}$	0.79	1.81	0.79	2.36	2.24	2.36	1.18

WS = wrench size


**SeaPress XL tee**

- CuNiFe 90/10
- Press connections, Rp-thread

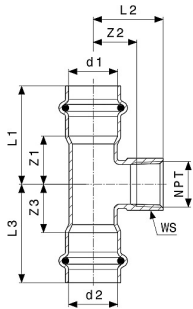
**Components**

EPDM sealing elements, grip rings, separator rings, polygon

**Model 0317.2XL**

Part No	Rp	Z1 [in]	Z2 [in]	Z3 [in]	L1 [in]	L2 [in]	L3 [in]	WS [in]
<b>453 770</b>	$\frac{3}{4}$	0.98	1.89	0.98	2.95	2.44	2.95	1.18

WS = wrench size


**SeaPress tee**

- CuNiFe 90/10
- Press connections, female pipe thread

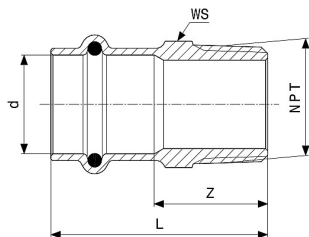
**Components**

EPDM sealing elements, polygon

**Model 0317.5**

Part No	NPT	Z1 [in]	Z2 [in]	Z3 [in]	L1 [in]	L2 [in]	L3 [in]	WS [in]
461 072	3/4	0.79	1.26	0.79	1.81	1.81	1.81	1.18
461 089	3/4	0.67	1.5	0.67	2.09	2.09	2.09	1.18
461 096	3/4	0.79	1.69	0.79	2.36	2.24	2.36	1.18

WS = wrench size


**SeaPress adapter**

- CuNiFe 90/10
- Press connection, male pipe thread

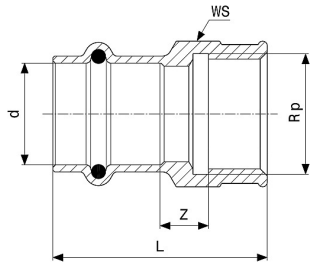
**Components**

EPDM sealing element, polygon

**Model 0311.5**

Part No	NPT	Z [in]	L [in]	WS [in]
460 792	1/2	0.98	1.85	0.87
460 815	3/4	1.14	2.05	1.1
460 822	1	1.34	2.28	1.42
461 157	1 1/4	1.5	2.52	1.69
461 164	1 1/2	1.42	2.83	1.97
461 171	2	1.54	3.11	2.68

WS = wrench size


**SeaPress adapter**

- CuNiFe 90/10
- Press connection, Rp-thread

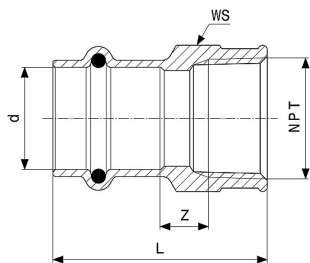
**Components**

EPDM sealing element

**Model 0312**

Part No	Rp	Z [in]	L [in]	WS [in]
453 039	½	0.28	1.73	1.02
453 046	¾	0.31	1.85	1.22
453 053	1	0.35	2.05	1.5
453 060	1¼	0.24	2.13	1.85
453 084	1½	0.43	2.72	2.09
453 091	2	0.55	3.15	2.76

WS = wrench size


**SeaPress adapter**

- CuNiFe 90/10
- Press connection, female pipe thread

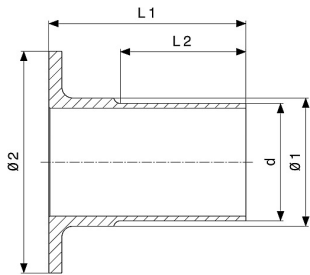
**Components**

EPDM sealing element, polygon

**Model 0312.5**

Part No	NPT	Z [in]	L [in]	WS [in]
461 188	½	0.28	1.69	1.02
461 195	¾	0.31	1.77	1.22
461 201	1	0.39	2.01	1.5
461 218	1¼	0.35	2.05	1.85
461 225	1½	0.43	2.52	2.09
461 249	2	0.51	2.8	2.76

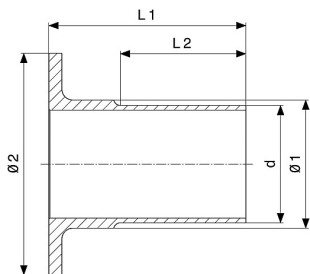
WS = wrench size


**SeaPress flare**

- For loose flange PN 10/16
- CuNiFe 90/10
- Street
- Stub-end

**Model 0359.3**

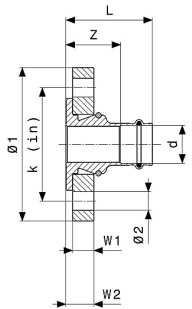
Part No	Ø1 [in]	Ø2 [in]	L1 [in]	L2 [in]
<b>454 067</b>	1.06	2.28	2.64	1.54
<b>454 074</b>	1.26	2.68	2.76	1.65
<b>454 081</b>	1.57	3.07	2.95	1.85
<b>454 098</b>	1.85	3.46	3.46	2.17
<b>454 104</b>	2.32	4.02	3.58	2.28


**SeaPress XL flare**

- For loose flange PN 10/16
- CuNiFe 90/10
- Street
- Stub-end

**Model 0359.3XL**

Part No	Ø1 [in]	Ø2 [in]	L1 [in]	L2 [in]
<b>454 111</b>	3.07	4.8	3.94	2.64
<b>454 128</b>	3.58	5.43	3.94	2.44
<b>454 135</b>	4.33	6.22	4.33	2.83



### SeaPress flange

- Bronze
- Press connection
- ANSI 150lb drilled flange x metric press

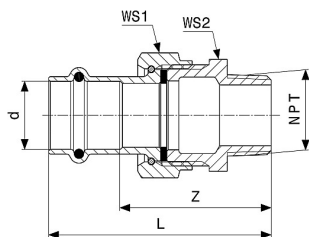
### Components

EPDM sealing element

### Model 2259.5U

Part No	W1 [in]	W2 [in]	Ø1 [in]	Ø2 [in]	k [in]	Z [in]	L [in]
592 011	0.63	0.83	4.33	0.63	3.11	1.65	2.56
592 028	0.63	0.83	4.53	0.63	3.5	1.77	2.76
592 035	0.63	0.83	4.92	0.63		1.85	3.27
592 042	0.63	0.83	5.91	0.75	4.76	1.97	3.54

k = bolt circle diameter



### SeaPress union

- CuNiFe 90/10
- Press connection, male pipe thread
- Flat sealing

### Components

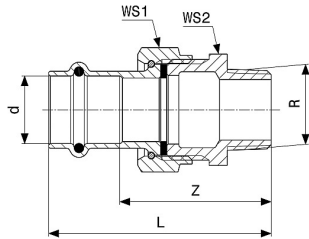
Flat gasket EPDM, EPDM sealing element, polygon

### Model 0365.5

Part No	NPT	Z [in]	L [in]	WS1 [in]	WS2 [in]
477 226	½	1.73	2.6	1.18	1.06
477 233	½	1.89	2.83	1.46	1.34
477 240	¾	1.97	2.87	1.46	1.34
477 264	1	2.28	3.19	1.81	1.73
477 257	1¼	2.4	3.43	2.09	1.97
534 691	1½	2.68	4.09	2.36	2.17

WS1 = wrench size

WS2 = Spanner width



### SeaPress union

- CuNiFe 90/10
- Press connection, R-thread
- Flat sealing

### Components

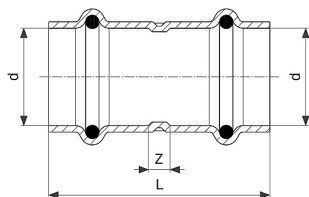
Flat gasket EPDM, EPDM sealing element, polygon

### Model 0365

Part No	R	Z [in]	L [in]	WS1 [in]	WS2 [in]
<b>477 172</b>	½	1.73	2.6	1.18	1.06
<b>477 189</b>	½	1.89	2.8	1.46	1.34
<b>477 196</b>	¾	1.93	2.87	1.46	1.34
<b>477 202</b>	1	2.24	3.19	1.81	1.73
<b>477 219</b>	1¼	2.44	3.46	2.09	1.97
<b>534 684</b>	1½	2.6	3.98	2.36	2.17

WS1 = wrench size

WS2 = Spanner width



### SeaPress coupling

#### With stop

- CuNiFe 90/10
- Press connections

### Components

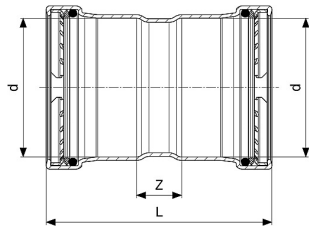
EPDM sealing elements

### Model 0315

Part No	Z [in]	L [in]	Z* [in]	L* [in]
<b>453 107</b>	0.12	1.85		
<b>453 114</b>	0.2	2.01		
<b>453 121</b>	0.16	2.05		
<b>453 138</b>	0.16	2.2		
<b>453 145</b>	0.16	2.99		
<b>453 152</b>	0.16	3.31	0.47	3.62

Z\* = predecessor

L\* = length (previous version)


**SeaPress XL coupling**
**With stop**

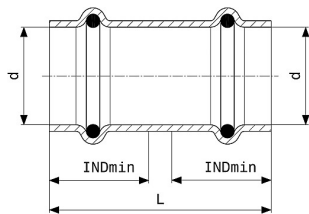
- CuNiFe 90/10
- Press connections

**Components**

EPDM sealing elements, grip rings, separator rings

**Model 0315XL**

Part No	Z [in]	L [in]
<b>556 495</b>	0.98	4.92
<b>556 501</b>	0.98	4.92
<b>556 518</b>	1.06	5.79


**SeaPress slip coupling**
**No stop**

- CuNiFe 90/10
- Press connections

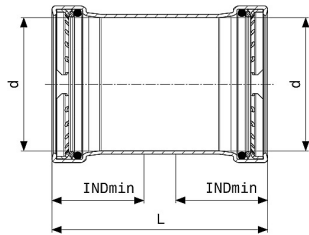
**Components**

EPDM sealing elements

**Model 0315.3**

Part No	L [in]	INDmin [in]
<b>453 299</b>	1.85	0.87
<b>453 305</b>	2.01	0.91
<b>453 312</b>	2.05	0.94
<b>453 329</b>	2.2	1.02
<b>453 336</b>	2.99	1.42
<b>453 343</b>	3.31	1.57

INDmin = insertion depth minimum


**SeaPress XL slip coupling**
**No stop**

- CuNiFe 90/10
- Press connections

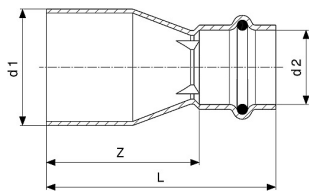
**Components**

EPDM sealing elements, grip rings, separator rings

**Model 0315.5XL**

Part No	L [in]	INDmin [in]
453 411	4.92	1.97
453 428	4.92	1.97
453 435	5.79	2.36

INDmin = insertion depth minimum


**SeaPress reducer**

- CuNiFe 90/10
- Street, press connection

**Components**

EPDM sealing element

**Model 0315.1**

Part No	Z [in]	L [in]
452 810	1.42	2.28
452 827	1.42	2.32
452 834	1.81	2.72
452 841	1.54	2.48
453 251	2.48	3.43
453 268	2.2	3.23
453 275	2.8	3.82
453 282	2.44	3.9

## Model number directory

Model	Page No.
0311.5	10
0312	11
0312.5	11
0315	14
0315.1	16
0315.3	15
0315.5XL	16
0315XL	15
0316	5
0316.1	6
0316.1XL	6
0316XL	5
0317.2	9
0317.2XL	9
0317.5	10
0318	8
0326	7
0326.1XL	8
0326XL	7
0359.3	12
0359.3XL	12
0365	14
0365.5	13
2259.5U	13

## Article number directory

Part No	Page No.	Part No	Page No.	Part No	Page No.	Part No	Page No.
452 810	16	453 329	15	454 104	12	556 501	15
452 827	16	453 336	15	454 111	12	556 518	15
452 834	16	453 343	15	454 128	12	556 525	6
452 841	16	453 411	16	454 135	12	556 532	6
453 039	11	453 428	16	460 792	10	556 549	6
453 046	11	453 435	16	460 815	10	556 556	5
453 053	11	453 473	8	460 822	10	556 563	5
453 060	11	453 480	8	461 072	10	556 570	5
453 084	11	453 497	8	461 089	10	556 587	8
453 091	11	453 503	8	461 096	10	556 594	8
453 107	14	453 510	8	461 157	10	556 600	8
453 114	14	453 527	8	461 164	10	556 617	7
453 121	14	453 534	8	461 171	10	556 624	7
453 138	14	453 541	8	461 188	11	556 631	7
453 145	14	453 558	8	461 195	11	592 011	13
453 152	14	453 657	6	461 201	11	592 028	13
453 169	5	453 664	6	461 218	11	592 035	13
453 176	5	453 671	6	461 225	11	592 042	13
453 183	5	453 749	9	461 249	11		
453 190	5	453 756	9	477 172	14		
453 206	5	453 763	9	477 189	14		
453 213	5	453 770	9	477 196	14		
453 220	6	453 886	7	477 202	14		
453 237	6	453 893	7	477 219	14		
453 244	6	453 909	7	477 226	13		
453 251	16	453 916	7	477 233	13		
453 268	16	453 923	7	477 240	13		
453 275	16	453 930	7	477 257	13		
453 282	16	454 067	12	477 264	13		
453 299	15	454 074	12	534 684	14		
453 305	15	454 081	12	534 691	13		
453 312	15	454 098	12	556 495	15		

## Legal notices

The liability period for our products within the scope of our liability insurance covers a period of 5 years from date of installation and ends at the latest 10 years after delivery by Viega.

Within this period, we are liable for design defect, faulty material, manufacturing defect and failure to instruct for which we are responsible. The validity of the warranty is subject to correct handling of the products in accordance with our current assembly instructions and technical documentation as well as adherence to the recognized standards of technology. The warranty does not apply in cases of incorrect and non-professional installation.

The Viega system tools such as press tools, press jaws, press rings, Steptec punches, pipe cutters, calibrating tools etc. are subject to a two-year warranty period from date of purchase at the wholesaler.



# Imprint

**Viega LLC**

585 Interlocken Blvd.  
Broomfield, CO 80021

customerservice@viega.us  
800-976-9819

The Submittal Package contains non-binding information that is being provided to you. All contents in the Submittal Package have been compiled with the greatest possible care and attention. Despite this, we are unable to guarantee that the information is up to date, accurate and complete. Placing an order does not automatically render the Submittal Package part of the contract.