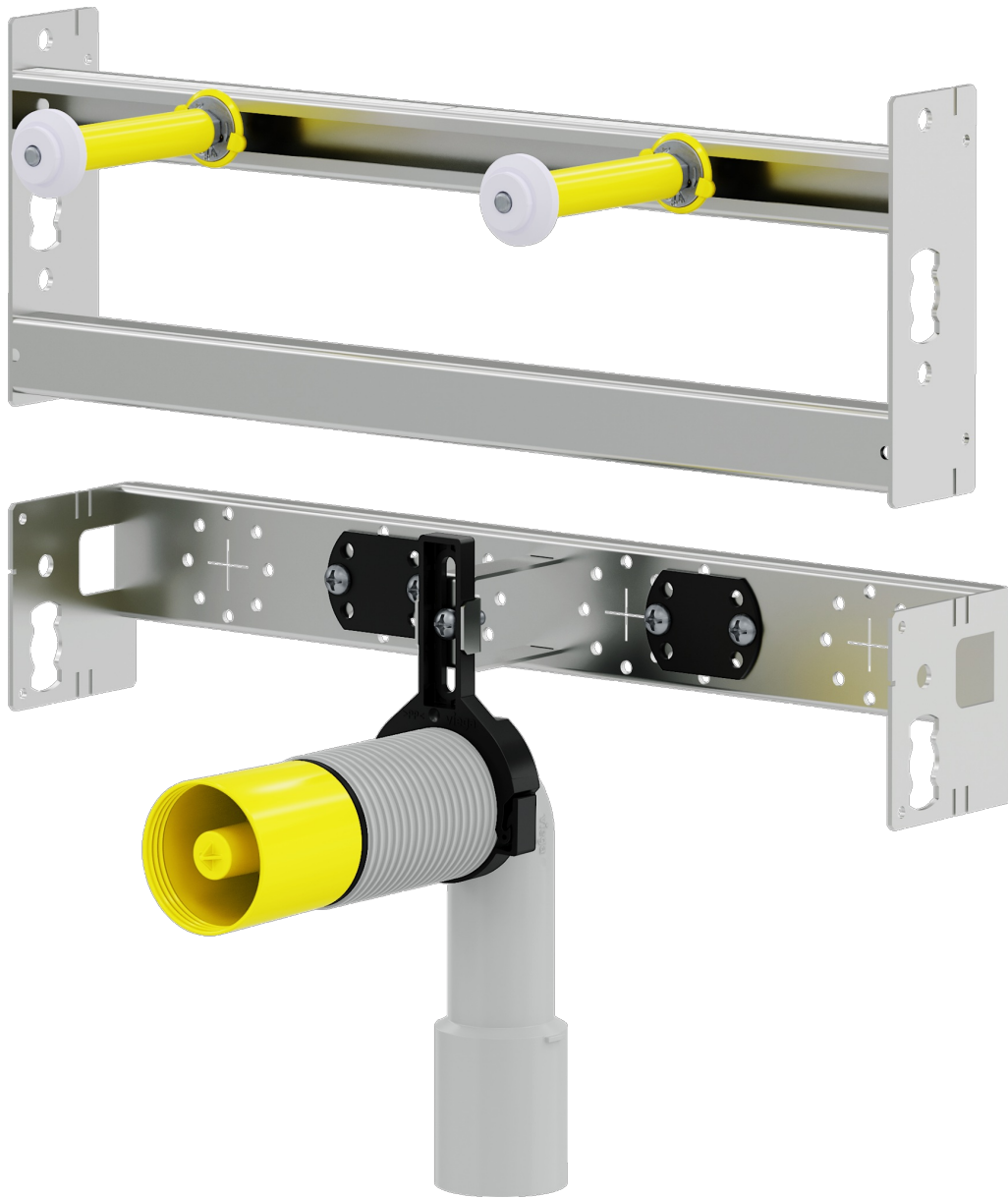


Prevista Dry Plus

Submittal Package



Index

| | | |
|---|---------------------------|---|
| 1 | Product group description | 3 |
| 2 | Certification | 4 |
| 3 | Imprint | 5 |

Product group description

Flexible pre-wall installation system for dry construction (lightweight construction wall). Barrier-free mounting and mounting for the needs of the disabled possible. With mounting rail, rail connector, pre-wall elements and ready-to-install sanitary modules and fitting holders. For half height and room height pre-wall constructions, as well as free-standing constructions. Consisting of: Mounting rail, with large installation face for cladding and direct fixing to floors, ceilings and walls, rail connector for 45° and 90° connections and rail punch for cutting the rail punch to length precisely and without burr

Pre-wall elements for:

WC, bidet, washbasin, urinal, fitting holder

Cladding with:

Fibre-glass reinforced, core impregnated plasterboard cladding panels, 10 mm thick.

Plasterboard cladding panels for extremely wet areas, commercially available cladding panels.

Calculation of material required:

The required length of rail and amount of fastening material can be calculated from the width and height of the pre-wall area in m².

surface (m²) x rail factor = required rail length (m)

rail factor 4.5 for Prevista Dry installation elements

rail factor 5.5 for Prevista Dry Plus installation modules

The rail factor is no substitute for detailed planning.

Note

Use of the system for areas of application and media other than those described must be agreed in consultation with Viega. Load: WC and bidet 400 kg, washbasin and urinal 150 kg, support handles and hand grips 100 kg. Fulfills the general requirements for fire safety and sound protection. Detailed information on fire safety and sound protection can be obtained from the Viega website or from your contact at Viega.

Flush Plate Configurator

Web application for simple, quick calculation and visualisation of the appropriate flush plate for the bathroom design.

Changes and errors excepted.

Latest Z- and installation dimensions as well as further technical information can be found on the Viega website and have to be checked before purchase, planning, construction work and use. Our products are continuously optimized.

This product description contains important information on choice of product and system, mounting, commissioning as well as intended use and, if required, on maintenance measures. This information on products, their features and application techniques is based on currently valid standards in Europe (e.g. EN) and/or in Germany (e.g. DIN/DVGW). Some passages in the text may refer to technical regulations in Europe/Germany. These should be considered as recommendations for other countries where no corresponding national requirements exist. The relevant national laws, standards, regulations, directives and other technical provisions take priority over the German/European directives specified in this product description: The information herein is not binding for other countries and regions and should be understood as recommendation.

Certification

| | |
|-------------------------------------------------------------------------------------|----------------------------------------------------------------------------------------------------|
|  | <p>LGA certificate WELL classification Viega 3F "Prevista"</p> |
|  | <p>LGA certificate WELL classification Viega 3H "Prevista"</p> |
| <p>VDMA</p> | <p>WELL Water Efficiency Label Home Prevista cistern</p> |
| <p>VDMA</p> | <p>WELL Water Efficiency Label Public Prevista concealed cistern</p> |
|  | <p>WRAS Certificate WC Dual Flush</p> |
|  | <p>WRAS Certificate Concealed WC cistern</p> |
|  | <p>WRAS Certificate Concealed WC cistern</p> |
|  | <p>WRAS Certificate Compact type float operated valve</p> |
|  | <p>KIWA Product certificate Flushing Cisterns Model Viega Prevista 3H, Prevista 3 L</p> |
|  | <p>KIWA Product Certificate Float operated valve</p> |
|  | <p>ITB Certificate Prevista</p> |

Imprint

Viega GmbH & Co. KG

Viega Platz 1
57439 Attendorn
Germany
Phone: +49/2722/61-0
Fax: +49/2722/61-1566

The Viega GmbH & Co. KG is represented by the general partners: Viega Management B.V. (Managing directors: Michael Klenz, Sebastian Lelgemann) and Viega Management GmbH (Managing directors: Michael Klenz, Sebastian Lelgemann)

The Submittal Package contains non-binding information that is being provided to you. All contents in the Submittal Package have been compiled with the greatest possible care and attention. Despite this, we are unable to guarantee that the information is up to date, accurate and complete. Placing an order does not automatically render the Submittal Package part of the contract.