

Profipress S

Submittal Package



table of contents

| | | |
|---|---------------------------|----|
| 1 | Product group description | 3 |
| 2 | Permitted pipes | 5 |
| 3 | Certificates | 6 |
| 4 | Z dimensions | 7 |
| 5 | Imprint | 12 |

Product group description

Flow-optimised press connector system made of copper (99.9 % Cu-DHP), gunmetal or silicon bronze for copper pipes. Press connectors for protecting the sealing element equipped with cylindrical pipe guide. The pressing force is located before and behind the sealing element seat. Suitable for concealed and pre-wall installations of riser pipes and floor installations.

Marking

Manufacturer, pipe dimension, batch, approval markings (DVGW), white dot on press end, white rectangle with inscription »FKM«

Press connector with SC-Contur

Inadvertently unpressed connections are noticed immediately during a leakage test.

Viega guarantees the detection of unpressed connections in the following pressure ranges:

Min. water pressure: 0.1 MPa / 100 kPa / 1 bar / 14.5 PSI

Max. water pressure: 0.65 MPa / 650 kPa / 6.5 bar / 94.3 PSI

Min. air pressure: 22 hPa / 2.2 kPa / 22 mbar / 0.3 PSI

Max. air pressure: 0.3 MPa / 300 kPa / 3 bar / 43.5 PSI

Sealing elements

FKM (fluorocarbon rubber), matt black, pre-assembled

The use of Profipress S and Profipress connectors with FKM sealing elements in potable water and gas installations is not permitted!

Notice

The sealing materials of the press connector system are subject to thermal ageing, which depends on the media temperature and the operating time.

The higher the media temperature, the faster the thermal ageing of the sealing material progresses.

In the case of special operating conditions, e.g. industrial heat recovery systems, it is necessary to compare the specifications of the appliance manufacturer with the specifications of the press connector system.

Before using the press connector system beyond the areas of application described or if in doubt about the correct selection of material, please contact Viega.

Dimensions

d12–35

Tools

The functional safety of Viega press connector systems depends primarily on the faultless condition of the press tools used. Viega recommends the use of Viega press tools for pressing Viega press connectors. Viega press tools have to be regularly maintained by authorised service partners.

Areas of application

Solar installations (flat plate/vacuum collector)

District heat supply systems

Low-pressure steam systems

Use for systems with additives (e.g. anti-corrosion or anti-freeze agents in heating water) or areas of application other than those described must be approved by Viega.

Note

Use of the system for areas of application and media other than those described must be agreed in consultation with Viega! Detailed information about applications, restrictions and national standards and directives can be found in the product information, either printed or on the Viega website.

Note – Standards and approvals

Press connectors tested in accordance with DVGW Worksheet W 534 with DVGW test mark.

Press connectors suitable for copper pipes in accordance with DIN EN 1057 and DVGW Worksheet GW 392.

Operating conditions solar installations (flat plate/vacuum collectors)

Operating temperature max. 140 °C / 284 °F

Operating pressure max. 0.6 MPa / 6 bar / 87 PSI

Operating conditions district heat supply systems

Operating temperature max. 140 °C / 284 °F

Operating pressure max. 1.6 MPa / 16 bar / 232 PSI

Operating conditions low-pressure steam systems

Operating temperature max. 120 °C / 248 °F

Operating pressure max. 0.1 MPa / 1 bar / 14.5 PSI

The press connector system Profipress S is designed for nominal pressure PN 16.

Press connector material

Copper: 99.9 % Cu-DHP

Gunmetal: CC499K

Silicon bronze: CC246E / CuSi4Zn9MnP

Subject to change without prior notice!

Latest Z- and installation dimensions as well as further technical information can be found on the Viega website and have to be checked before purchase, planning, construction work and use. Our products are continuously optimised.

This product description contains important information on choice of product and system, mounting, commissioning as well as intended use and, if required, on maintenance measures. This information on products, their features and application techniques is based on currently valid standards in Europe (e.g. EN) and/or in Germany (e.g. DIN/DVGW). Some passages in the text may refer to technical regulations in Europe/Germany. These should be considered as recommendations for other countries where no corresponding national requirements exist. The relevant national laws, standards, regulations, directives and other technical provisions take priority over the German/European directives specified in this product description: The information herein is not binding for other countries and regions and should be understood as recommendation.

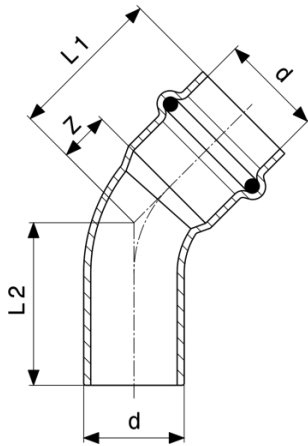
Permitted pipes

| standard | DN | external Ø | wall thickness |
|-----------------------|-----|------------|----------------|
| copper DIN EN 1057 | 10 | 12 | 0.8 1.0 |
| | 12 | 15 | 1.0 |
| | 15 | 18 | |
| | 20 | 22 | |
| | 25 | 28 | 1.0 1.5 |
| | 32 | 35 | 1.2 1.5 |
| | 40 | 42 | |
| | 50 | 54 | 1.5 2.0 |
| | 60 | 64.0 | 2.0 |
| | 65 | 76.1 | |
| | 80 | 88.9 | |
| | 100 | 108.0 | 2.5 |

Certificates

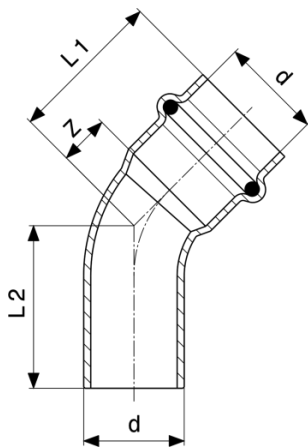
| | |
|---|---|
| SZU | SZU Certificate Profipress, Profipress S |
|  The ITB logo features a stylized letter 'B' inside a square frame. The 'B' is composed of black and white geometric shapes. Below the frame is the number '10'. | ITB National Technical Assessment Profipress, Profipress XL, Profipress S |

Z dimensions



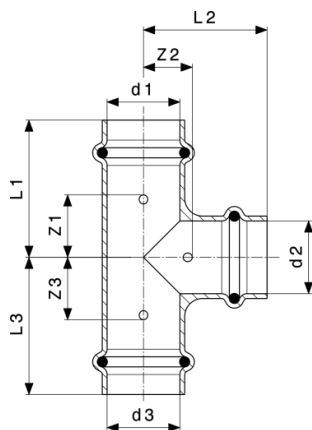
Profipress S Elbow 45°
- copper
Model 4526

| Article | d | Z | L |
|----------------|----|----|----|
| 628 284 | 12 | 6 | 24 |
| 628 291 | 15 | 7 | 29 |
| 628 314 | 22 | 11 | 34 |
| 628 321 | 28 | 12 | 36 |
| 628 338 | 35 | 15 | 41 |



Profipress S Elbow 45°
- copper
Model 4526.1

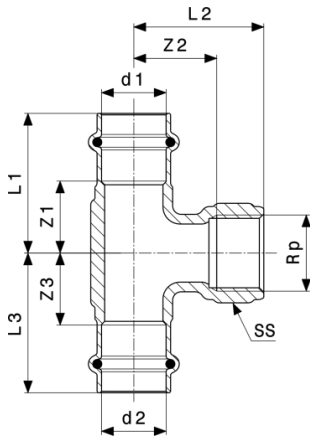
| Article | d | Z | L1 | L2 |
|----------------|----|----|----|----|
| 628 345 | 12 | 6 | 24 | 26 |
| 628 352 | 15 | 7 | 29 | 29 |
| 628 376 | 22 | 11 | 34 | 36 |
| 628 383 | 28 | 12 | 36 | 40 |
| 628 390 | 35 | 15 | 41 | 43 |



Profipress S T-piece
- copper
Model 4518

| Article | d1 | d2 | d3 | Z1 | Z2 | Z3 | L1 | L2 | L3 |
|-----------------|----|----|----|----|----|----|----|----|----|
| 628 406 | 12 | 12 | 12 | 18 | 9 | 18 | 36 | 27 | 36 |
| 628 420* | 15 | 12 | 15 | 16 | 12 | 16 | 39 | 30 | 39 |
| 628 413 | 15 | 15 | 15 | 19 | 11 | 19 | 41 | 33 | 41 |
| 627 843 | 22 | 15 | 22 | 18 | 15 | 18 | 41 | 37 | 41 |
| 628 451 | 22 | 22 | 22 | 19 | 15 | 19 | 42 | 38 | 42 |
| 628 574 | 28 | 15 | 28 | 17 | 19 | 17 | 41 | 41 | 41 |
| 628 598 | 28 | 22 | 28 | 20 | 19 | 20 | 45 | 42 | 45 |
| 628 567 | 28 | 28 | 28 | 24 | 19 | 24 | 48 | 43 | 48 |
| 628 611 | 35 | 22 | 35 | 19 | 22 | 19 | 46 | 45 | 46 |
| 628 628 | 35 | 28 | 35 | 22 | 22 | 22 | 49 | 46 | 49 |
| 628 604 | 35 | 35 | 35 | 26 | 22 | 26 | 52 | 48 | 52 |

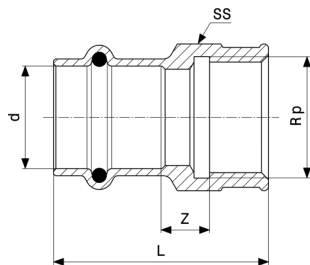
* = Discontinued, limited availability



Profipress S T-piece
- gunmetal or silicon bronze
Model 4517.2

| Article | d1 | Rp | d2 | Z1 | Z2 | Z3 | L1 | L2 | L3 | SS |
|----------------|----|----|----|----|----|----|----|----|----|----|
| 628 635 | 15 | ½ | 15 | 19 | 11 | 19 | 41 | 21 | 41 | |
| 628 659 | 22 | ½ | 22 | 19 | 13 | 19 | 42 | 28 | 42 | 26 |
| 628 666 | 28 | ½ | 28 | 21 | 17 | 21 | 45 | 32 | 45 | 26 |
| 628 673 | 35 | ½ | 35 | 19 | 20 | 19 | 45 | 35 | 45 | 26 |

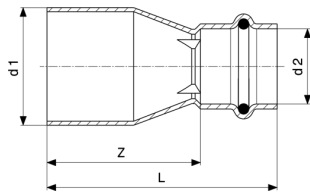
SS = spanner size



Profipress S Adapter
- gunmetal or silicon bronze
Model 4512

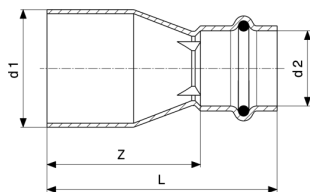
| Article | d | Rp | Z | L | SS |
|----------------|----|----|----|----|----|
| 628 857 | 12 | ¾ | 7 | 32 | 21 |
| 628 864 | 15 | ½ | 7 | 44 | 26 |
| 628 895 | 22 | ¾ | 11 | 47 | 31 |
| 628 901 | 22 | 1 | 14 | 52 | 38 |
| 628 918 | 28 | 1 | 14 | 52 | 38 |
| 628 925 | 35 | 1¼ | 14 | 54 | 47 |

SS = spanner size



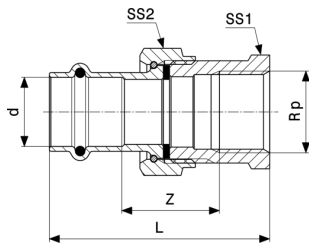
Profipress S Coupling
- copper
Model 4515

| Article | d | Z | L |
|----------------|----|---|----|
| 628 932 | 12 | 3 | 39 |
| 628 949 | 15 | 3 | 47 |
| 628 963 | 22 | 5 | 51 |
| 628 970 | 28 | 4 | 52 |
| 628 987 | 35 | 4 | 56 |



Profipress S Reducer
- copper
Model 4515.1

| Article | d1 | d2 | Z | L |
|----------------|----|----|----|----|
| 628 994 | 15 | 12 | 32 | 50 |
| 629 014 | 22 | 15 | 36 | 58 |
| 629 038 | 28 | 15 | 43 | 65 |
| 629 052 | 28 | 22 | 31 | 54 |
| 629 069 | 35 | 22 | 46 | 69 |
| 629 076 | 35 | 28 | 39 | 63 |

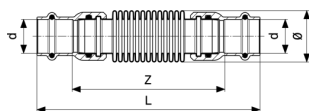


Profipress S Adapter union
- gunmetal or silicon bronze
Model 4562

| Article | d | Rp | Z | L | SS1 | SS2 |
|-----------------|----|----|----|----|-----|-----|
| 629 151* | 15 | ½ | 26 | 63 | 30 | 27 |
| 629 175 | 22 | ¾ | 32 | 72 | 37 | 34 |
| 629 182 | 28 | 1 | 33 | 76 | 46 | 43 |
| 629 199 | 35 | 1¼ | 36 | 83 | 53 | 50 |

SS = spanner size

* = Discontinued, limited availability



Profipress S Compensator
Model 4551

| Article | d | Z | L | Ø |
|----------------|----|-----|-----|----|
| 629 083 | 15 | 100 | 144 | 23 |
| 629 106 | 22 | 102 | 149 | 34 |
| 629 113 | 28 | 121 | 168 | 41 |
| 629 120 | 35 | 123 | 174 | 50 |

Ø = diameter

Imprint

Viega GmbH & Co. KG

Viega Platz 1
57439 Attendorn
Germany
Phone: +49/2722/61-0
Fax: +49/2722/61-1566

The Viega GmbH & Co. KG is represented by the general partners: Viega Management B.V. (Managing directors: Michael Klenz, Sebastian Lelgemann) and Viega Management GmbH (Managing directors: Michael Klenz, Sebastian Lelgemann)

The Submittal Package contains non-binding information that is being provided to you. All contents in the Submittal Package have been compiled with the greatest possible care and attention. Despite this, we are unable to guarantee that the information is up to date, accurate and complete. Placing an order does not automatically render the Submittal Package part of the contract.