

**Sanpress Inox G**

Submittal Package



# table of contents

1	Product group description	3
2	Permitted pipes	5
3	Certificates	6
4	Z dimensions	8
5	Imprint	20

# Product group description

Flow-optimised press connector system with press connectors and pipes made of stainless steel 1.4401. Press connectors for protecting the sealing element equipped with cylindrical pipe guide. Press connectors from d64.0 with stainless steel cutting ring to ensure the mechanical strength of the connection. For protection pipes are equipped with pipe plugs. The pressing force is located before and behind the sealing element seat. Suitable for concealed and pre-wall installations of riser pipes and floor installations.

## Marking

Manufacturer, pipe dimension, batch, yellow dot on press end, yellow rectangle with inscription »Gas MOP 5 / GT5« for Sanpress Inox G connectors, yellow rectangle with inscription »Gas MOP 5 / GT1« for Profipress G connectors made of gunmetal, yellow pipe plug, detachable orange label as press indicator from d64.0

## Press connector with SC-Contur

Inadvertently unpressed connections are noticed immediately during a leakage test.

Viega guarantees the detection of unpressed connections in the following pressure ranges with compressed air or inert gases:

Min. air pressure: 22 hPa / 2.2 kPa / 22 mbar / 0.3 PSI

Max. air pressure: 0.3 MPa / 300 kPa / 3 bar / 43.5 PSI

## Sealing elements

HNBR (hydrogenated acrylonitrile butadiene rubber), yellow, pre-assembled

## Dimensions

d15–108.0

## Tools

The functional safety of Viega press connector systems depends primarily on the faultless condition of the press tools used. Viega recommends the use of Viega press tools for pressing Viega press connectors. Viega press tools have to be regularly maintained by authorised service partners.

## Areas of application

Natural gas/liquid gas

Heating oil

Diesel fuel

## Note

The system components should be protected against high concentrations of chloride generated by both the medium and by external factors. Use of the system for areas of application and media other than those described must be agreed in consultation with Viega! Detailed information about applications, restrictions and national standards and directives can be found in the product information, either printed or on the Viega website.

## Note – Standards and approvals

Press connector system with press connectors and pipes in accordance with DIN EN 10088, DVGW Worksheet GW 541.

Press connector approval for stainless steel in accordance with DG-8531BR0333.

Press connector approval for gunmetal in accordance with DG-8531BP0069.

Gases in accordance with DVGW G 260 in gas installations in accordance with DVGW-TRGI 2018 (DVGW Worksheet G 600) / DVFG-TRF 2021.

Liquid gases in the gas phase for domestic and commercial applications, tested in accordance with DVGW Worksheet G 5614.

Piping for heating oil in accordance with DIN 51603 and piping for diesel fuel as suction and pressure line in accordance with DIN EN 590 in consideration of the General Building Approval Z-38.4-184.

**Operating conditions gas and liquid gas installations**

Operating temperature -20 °C to +70 °C (-4 °F to +158 °F)

Operating pressure max. 0.5 MPa / 5 bar / 72.5 PSI

Operating pressure at HTB requirements 650°C (1202 °F)/30 minutes max. 0.5 MPa (5 bar; 72.5 PSI)

**Operating conditions heating oil and diesel fuel installation**

Operating temperature max. 40 °C / 104 °F

Operating pressure -0.05 to +0.5 MPa (-0.5 to +5 bar / -7.25 to +72.5 PSI)

**Press connector material**

Stainless steel 1.4401

**Subject to change without prior notice!**








Latest Z- and installation dimensions as well as further technical information can be found on the Viega website and have to be checked before purchase, planning, construction work and use. Our products are continuously optimised.


This product description contains important information on choice of product and system, mounting, commissioning as well as intended use and, if required, on maintenance measures. This information on products, their features and application techniques is based on currently valid standards in Europe (e.g. EN) and/or in Germany (e.g. DIN/DVGW). Some passages in the text may refer to technical regulations in Europe/Germany. These should be considered as recommendations for other countries where no corresponding national requirements exist. The relevant national laws, standards, regulations, directives and other technical provisions take priority over the German/European directives specified in this product description: The information herein is not binding for other countries and regions and should be understood as recommendation.

## Permitted pipes

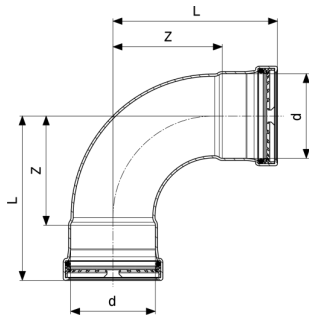
pipe material	Model	Article	external Ø	wall thickness
stainless steel	2203	297 824	12	1.0
stainless steel	2203	102 036	15	1.0
stainless steel	2203	289 034	18	1.0
stainless steel	2203	102 708	22	1.2
stainless steel	2203	104 924	28	1.2
stainless steel	2203	108 588	35	1.5
stainless steel	2203	113 001	42	1.5
stainless steel	2203	193 676	54	1.5
stainless steel	2203XL	578 626	64.0	2.0
stainless steel	2203XL	354 862	76.1	2.0
stainless steel	2203XL	354 855	88.9	2.0
stainless steel	2203XL	354 848	108.0	2.0

# Certificates

	<p><b>ÖVGW certificate</b> Sanpress Inox G (d 15 - 108)</p>
	<p><b>SAI StandardsMark Licence</b> Propress, Sanpress and Sanpress Inox</p>
<p>ARGB</p>	<p><b>gas.be - ARGB-KBVG Certificate</b> Sanpress Inox G (d 15-54)</p>
	<p><b>SVGW certificate</b> Sanpress Inox G (d 15 - 108)</p>
<p>SZU</p>	<p><b>SZU Certificate</b> Sanpress Inox G</p>
<p>AMTEC</p>	<p><b>AMTEC Certificate</b> Profipress, Sanpress, Sanpress Inox, Prestabo, Megapress, Profipress G, Sanpress Inox G, Megapress G</p>
	<p><b>DVGW type examination certificate</b> Sanpress Inox G with pipe 1.4401 (d 15 - 108)</p>
	<p><b>DVGW type examination certificate</b> Sanpress pipe 1.4401 (d 12 - 108)</p>
<p>BSI</p>	<p><b>BSI Kitemark Certificate</b> Sanpress Inox, Sanpress Inox G</p>
	<p><b>Lloyd's Register Type Approval Certificate</b> Sanpress Inox, ProPress 304 FKM, ProPress 316</p>
	<p><b>IMQ Certificate</b> Sanpress Inox G</p>

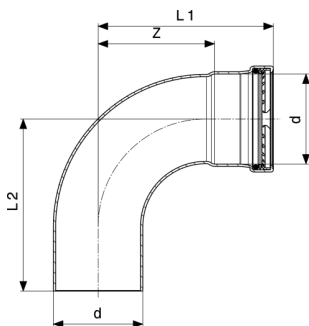
	<p><b>IMQ Certificate</b> Sanpress Inox G XL</p>
<p>IZV</p>	<p><b>IZV Certificate</b> Sanpress Inox G, Sanpress Inox G XL</p>

## Z dimensions



**Sanpress Inox G XL Elbow 90°**  
- non-corroding steel  
**Model 0216XL**

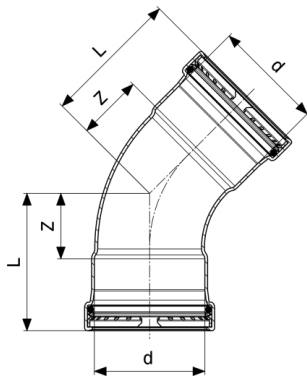
Article	d	Z	L
<b>577 476</b>	64	84	127
<b>577 483</b>	76.1	99	149
<b>577 490</b>	88.9	115	165
<b>577 506</b>	108	138	198



**Sanpress Inox G XL Elbow 90°**  
- non-corroding steel  
**Model 0216.1XL**

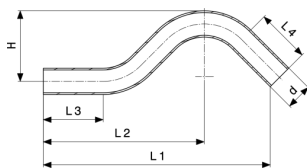
Article	d	Z	L1	L2
<b>577 513</b>	64	84	127	126
<b>577 520</b>	76.1	99	149	147
<b>577 537</b>	88.9	115	165	162
<b>577 544</b>	108	138	198	195





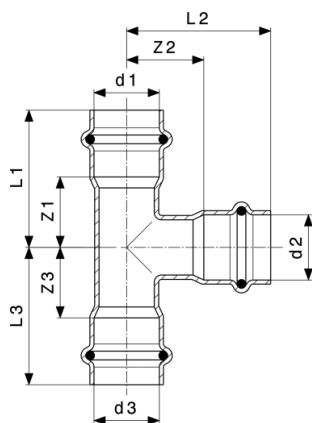
**Sanpress Inox G XL Elbow 45°**  
 - non-corroding steel  
**Model 0226XL**

Article	d	Z	L
<b>578 251</b>	64	39	82
<b>578 268</b>	76.1	46	96
<b>578 275</b>	88.9	52	102
<b>578 282</b>	108	61	121



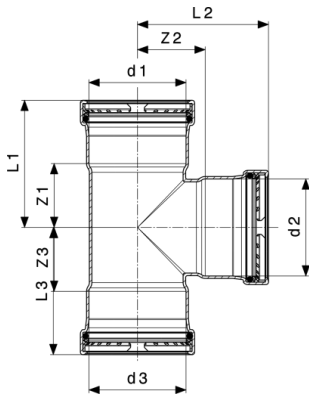
**Sanpress Crossover**  
 - non-corroding steel  
**Model 2209.3**

Article	d	L1	L2	L3	L4	H
<b>193 324</b>	15	148	104	39	39	48
<b>289 010</b>	18	169	118	45	45	52
<b>193 331</b>	22	190	135	50	45	59
<b>193 294</b>	28	195	138	60	50	67



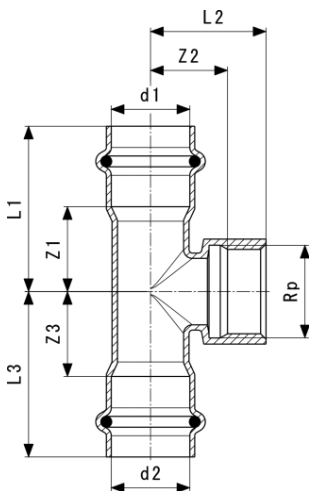
**Sanpress Inox G T-piece**  
 - non-corroding steel  
**Model 0218**

Article	d1	d2	d3	Z1	Z2	Z3	L1	L2	L3
<b>486 457</b>	15	15	15	19	22	19	41	43	41
<b>486 464</b>	18	18	18	21	23	21	43	45	43
<b>486 488</b>	22	22	22	24	27	24	47	50	47
<b>486 532</b>	28	22	28	23	31	23	47	54	47
<b>486 518</b>	28	28	28	28	29	28	52	53	52
<b>486 570</b>	35	28	35	27	33	27	53	57	53
<b>486 556</b>	35	35	35	27	27	27	53	53	53
<b>486 600</b>	42	28	42	25	37	25	61	61	61
<b>486 594</b>	42	42	42	32	32	32	68	68	68
<b>570 477</b>	54	28	54	21	43	21	61	67	61
<b>486 631</b>	54	42	54	29	38	29	69	74	69
<b>486 624</b>	54	54	54	39	39	39	79	79	79



**Sanpress Inox G XL T-piece**  
- non-corroding steel  
**Model 0218XL**

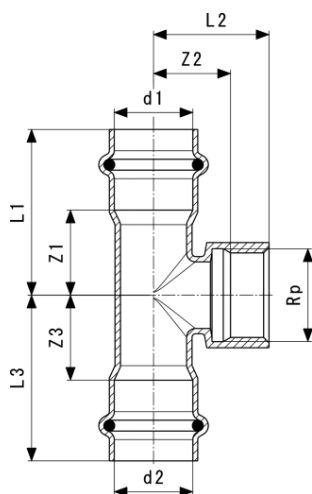
Article	d1	d2	d3	Z1	Z2	Z3	L1	L2	L3
<b>578 206</b>	64	64	64	46	48	46	89	91	89
<b>578 213</b>	76.1	76.1	76.1	51	54	51	101	104	101
<b>578 220</b>	88.9	88.9	88.9	57	61	57	107	111	107
<b>578 237</b>	108	108	108	67	70	67	127	130	127



**Sanpress Inox G T-piece**  
- non-corroding steel  
**Model 0217.2**

Article	d1	Rp	d2	Z1	Z2	Z3	L1	L2	L3	SS
<b>486 655</b>	15	½	15	19	14	19	41	29	41	24
<b>486 662</b>	18	½	18	21	15	21	43	30	43	24
<b>486 679</b>	22	½	22	22	17	22	45	32	45	24
<b>486 686</b>	22	¾	22	24	17	24	47	33	47	30
<b>486 693</b>	28	½	28	21	21	21	45	36	45	24
<b>486 709</b>	28	¾	28	23	21	23	47	37	47	30
<b>486 716</b>	35	½	35	19	25	19	45	40	45	24
<b>486 723</b>	42	½	42	19	28	19	55	43	55	24

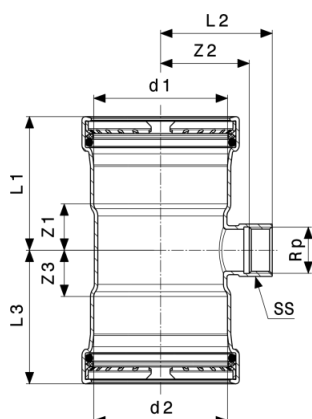
SS = spanner size



**Sanpress Inox G T-piece**  
- non-corroding steel  
**Model 0217.2**

Article	d1	Rp	d2	Z1	Z2	Z3	L1	L2	L3	SS
<b>486 730</b>	54	½	54	18	34	18	58	49	58	24

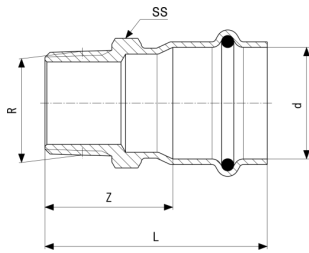
SS = spanner size



**Sanpress Inox G XL T-piece**  
- non-corroding steel  
**Model 0217.2XL**

Article	d1	Rp	d2	Z1	Z2	Z3	L1	L2	L3	SS
<b>578 435</b>	64	¾	64	25	40	25	68	56	68	30
<b>578 466</b>	76.1	¾	76.1	24	46	24	74	62	74	30
<b>578 459</b>	76.1	2	76.1	40	48	40	90	73	90	65
<b>578 473</b>	88.9	¾	88.9	24	55	24	74	68	74	30
<b>578 480</b>	88.9	2	88.9	40	54	40	90	79	90	65
<b>578 497</b>	108	¾	108	24	62	24	84	78	84	30
<b>578 503</b>	108	2	108	40	72	40	100	90	100	65

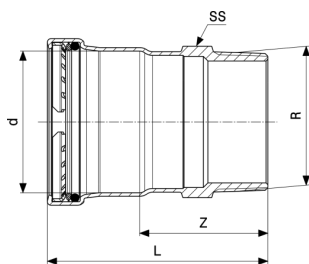
SS = spanner size



**Sanpress Inox G Adapter**  
- non-corroding steel  
**Model 0211**

Article	d	R	Z	L	SS
486 266	15	½	31	53	22
486 273	15	¾	34	56	27
486 280	18	½	30	52	22
486 297	18	¾	33	55	27
486 747	22	½	31	54	24
486 754	22	¾	33	56	27
486 761	22	1	34	57	34
486 778	28	¾	33	57	30
486 785	28	1	33	57	34
486 792	35	1	34	60	36
486 808	35	1¼	43	69	46
486 815	42	1½	45	81	50
486 822	54	2	49	89	62

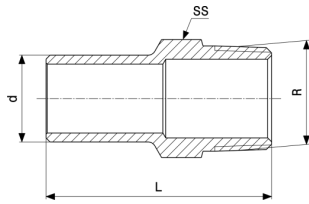
SS = spanner size



**Sanpress Inox G XL Adapter**  
- non-corroding steel  
**Model 0211XL**

Article	d	R	Z	L	SS
632 526	76.1	2½	65	115	80
632 533	88.9	3	68	118	90

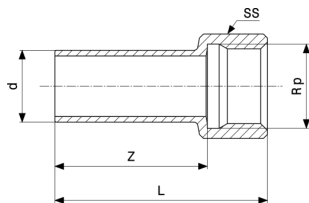
SS = spanner size



**Sanpress Inox Plug-in piece**  
- non-corroding steel  
**Model 2311.1**

Article	d	R	L	SS
436 704	15	½	58	22
436 711	18	½	57	22
436 728	18	¾	61	27
436 735	22	½	59	24
436 742	22	¾	61	27
436 759	28	1	65	36
436 766	35	1¼	73	46
436 773	42	1½	84	50
436 780	54	2	93	63

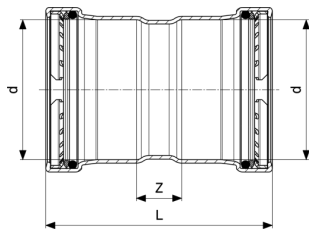
SS = spanner size



**Plug-in piece**  
- non-corroding steel  
**Model 2312.1**

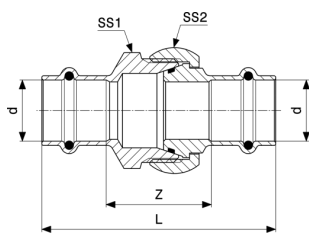
Article	d	Rp	Z	L	SS
436 797	15	½	38	53	26
436 803	18	½	38	53	26
436 810	18	¾	38	55	33
436 827	22	½	39	54	26
436 834	22	¾	39	55	33
436 841	28	¾	40	56	33
436 858	28	1	40	59	40
436 865	35	1¼	42	64	50
436 872	42	1½	54	75	60
436 889	54	2	61	87	70

SS = spanner size



**Sanpress Inox G XL Coupling**  
- non-corroding steel  
**Model 0215XL**

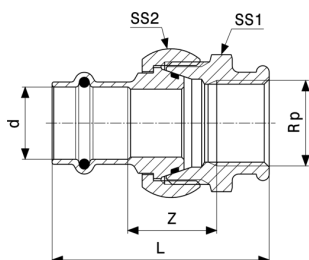
Article	d	Z	L
<b>578 244</b>	64	24	110
<b>578 558</b>	76.1	25	125
<b>578 565</b>	88.9	25	125
<b>578 572</b>	108	25	145



**Profipress G Screw fitting**  
- gunmetal  
**Model 2650**

Article	d	Z	L	SS1	SS2
<b>379 254</b>	15	33	77	31	34
<b>379 278</b>	22	39	86	40	41
<b>379 285</b>	28	47	94	45	48

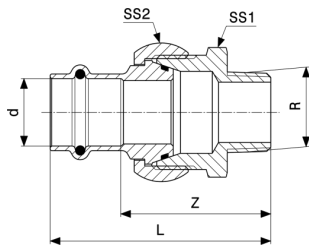
SS = spanner size



**Profipress G Adapter union**  
- gunmetal  
**Model 2652**

Article	d	Rp	Z	L	SS1	SS2
<b>379 322</b>	15	½	27	64	31	34
<b>379 346</b>	22	¾	28	68	40	41
<b>379 353</b>	28	1	59	83	45	48

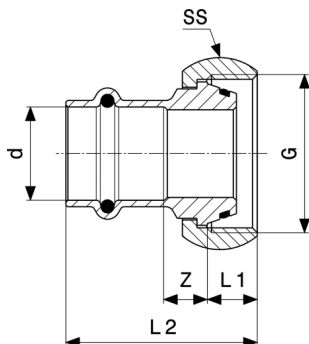
SS = spanner size



**Profipress G Adapter union**  
- gunmetal  
**Model 2654**

Article	d	R	Z	L	SS1	SS2
<b>379 391</b>	15	½	44	66	31	34
<b>390 662</b>	15	¾	47	69	31	34
<b>379 414</b>	22	¾	50	74	40	41
<b>390 686</b>	22	1	55	79	40	41
<b>477 981</b>	28	¾	60	83	45	48
<b>379 421</b>	28	1	59	83	45	48

SS = spanner size

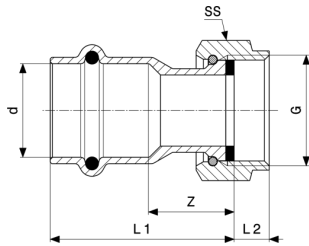


**Profipress G Connection screw fitting**  
- gunmetal  
**Model 2661**

Article	d	G	Z	L1	L2	SS
<b>351 113</b>	15	⅞	10	41	10	34
<b>351 120</b>	22	1⅞	12	46	11	41
<b>408 237</b>	22	1%	15	51	13	48
<b>351 137</b>	28	1%	16	52	13	48

SS = spanner size

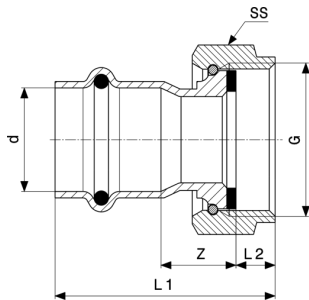




**Profipress G Connection screw fitting**  
- gunmetal  
**Model 2666**

Article	d	G	Z	L1	L2	SS
<b>477 455</b>	28	1¼	18	52	10	46
<b>490 829</b>	28	1½	15	50	11	52

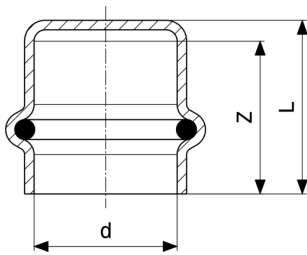
SS = spanner size



**Sanpress Inox G Connection screw fitting**  
- non-corroding steel  
**Model 0263.1**

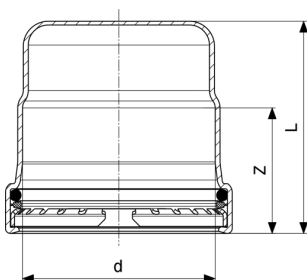
Article	d	G	Z	L1	L2	SS
<b>735 821</b>	18	¾	15	45	8	30
<b>735 838</b>	22	1	16	48	8	37
<b>735 845</b>	28	1¼	18	52	10	46
<b>735 852</b>	35	1½	18	55	10	53
<b>735 869</b>	42	2	24	75	14	66
<b>735 876</b>	54	2¾	24	76	12	78

SS = spanner size



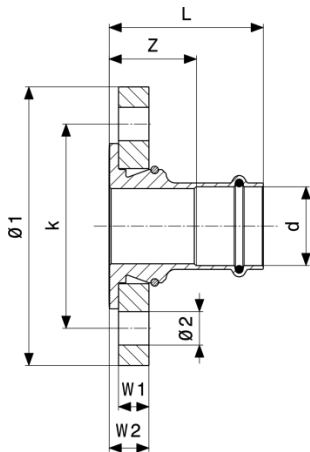
**Sanpress Inox G Cap**  
- non-corroding steel  
**Model 0256**

Article	d	Z	L
<b>487 232</b>	15	23	26
<b>487 249</b>	18	23	26
<b>487 256</b>	22	24	27
<b>487 263</b>	28	25	28
<b>487 270</b>	35	27	31
<b>487 287</b>	42	36	41
<b>487 294</b>	54	40	44



**Sanpress Inox G XL Cap**  
- non-corroding steel  
**Model 0256.1XL**

Article	d	Z	L
<b>578 640</b>	64	43	78
<b>578 633</b>	76.1	50	85
<b>578 657</b>	88.9	50	85
<b>578 664</b>	108	60	95



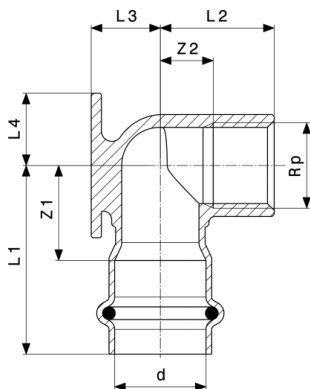
**Profipress G Flange transition**  
- gunmetal  
**Model 2659.5**

Article	DN	d	Z	L	W1	W2	Ø1	k	Ø2	n
<b>490 669</b>	25	28	42	65	16	21	115	85	14	4

Ø = diameter

k = bolt circle diameter

n = number of holes



**Sanpress Inox G Wall plate**  
- non-corroding steel  
**Model 0225.5**

Article	d	Rp	Z1	Z2	L1	L2	L3	L4
<b>487 300</b>	15	½	25	11	47	26	12	18
<b>487 317</b>	18	½	23	11	45	26	14	18
<b>487 324</b>	22	½	25	13	48	28	17	18
<b>493 974</b>	22	¾	27	13	50	30	17	20

# Imprint

## **Viega GmbH & Co. KG**

Viega Platz 1  
57439 Attendorn  
Germany  
Phone: +49/2722/61-0  
Fax: +49/2722/61-1566

The Viega GmbH & Co. KG is represented by the general partners: Viega Management B.V. (Managing directors: Michael Klenz, Sebastian Lelgemann) and Viega Management GmbH (Managing directors: Michael Klenz, Sebastian Lelgemann)

The Submittal Package contains non-binding information that is being provided to you. All contents in the Submittal Package have been compiled with the greatest possible care and attention. Despite this, we are unable to guarantee that the information is up to date, accurate and complete. Placing an order does not automatically render the Submittal Package part of the contract.