

Advantix shower channels
Submittal Package

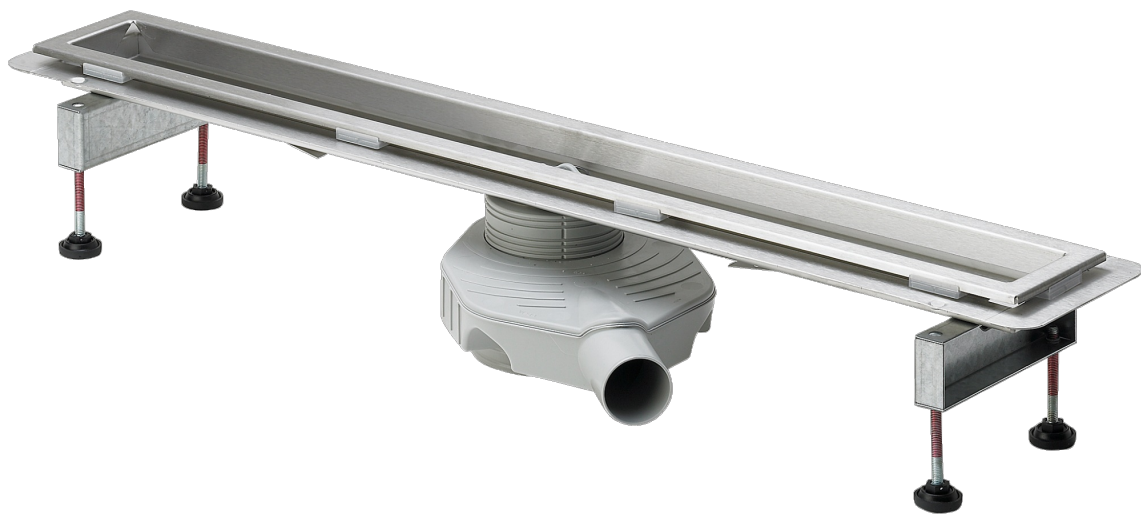


table of contents

1	Product group description_____	3
2	Certificates_____	4
3	Imprint_____	5

Product group description

Shower channels and accessories for bath drainage. For bonded sealing (tiled shower) with sealing mat and mounting adhesive. For wall and floor mounting. Installation heights from 0 to 200 mm. Various material and design versions.

Advantix Cleviva shower channels

vertical or horizontal outlet, mounting height from 0, 70 and 95 mm each, length of grates from 800 to 1200 mm

Advantix shower channels

Grate lengths from 750 to 1200 mm, grate and base unit from stainless steel 1.4301, sealing flange sand-coated, max. load capacity 300 kg, with removable odour trap.

Advantix Vario

Base unit can be cut to any length from 300 to 1200 mm, length, height and shape variable, made of high-quality plastic, with standing grate.

Advantix corner drains

Frame height and laterally adjustable, grate and base unit from stainless steel 1.4301, max. load capacity 300 kg, with removable immersion pipe.

Note










Use of the products for areas of application and media other than those described must be agreed in consultation with Viega! Plastic products made from PP (polypropylene) are environmentally compatible and offer the best properties for domestic wastewater. Hot water heated only briefly to max. 95 °C may be discharged via the odour traps! Do not use chemical cleaning agents to remove pipe blockages! Use only mild cleaning agents for the surfaces! Detailed information about applications, restrictions and national standards and directives can be found in the product information, either printed or on the Viega website.

Subject to change without prior notice!

Latest Z- and installation dimensions as well as further technical information can be found on the Viega website and have to be checked before purchase, planning, construction work and use. Our products are continuously optimised.

This product description contains important information on choice of product and system, mounting, commissioning as well as intended use and, if required, on maintenance measures. This information on products, their features and application techniques is based on currently valid standards in Europe (e.g. EN) and/or in Germany (e.g. DIN/DVGW). Some passages in the text may refer to technical regulations in Europe/Germany. These should be considered as recommendations for other countries where no corresponding national requirements exist. The relevant national laws, standards, regulations, directives and other technical provisions take priority over the German/European directives specified in this product description: The information herein is not binding for other countries and regions and should be understood as recommendation.

Certificates

	<p>LGA general test certificate issued by the building authorities</p> <p>Advantix plug-in drain</p>
	<p>LGA general test certificate issued by the building authorities</p> <p>Advantix-Top bath drain, Advantix-corner drain</p>
	<p>LGA certificate</p> <p>Advantix-floor drain systems</p>
	<p>LGA test certificate</p> <p>Advantix-grate non-slip</p>
	<p>LGA test certificate</p> <p>Advantix-grate non-slip</p>
	<p>LGA certificate</p> <p>Advantix-plug-in drain</p>
	<p>LGA certificate</p> <p>Advantix-balcony-/terrace plug-in drain</p>
	<p>LGA certificate</p> <p>Advantix-corner drain</p>
<p>EMI</p>	<p>EMI certificate</p> <p>Drains for bathtubs and shower trays, sinks and bidets</p>
	<p>ITB Product Certificate</p> <p>Advantix, Tempoplex</p>

Imprint

Viega GmbH & Co. KG

Viega Platz 1
57439 Attendorn
Germany
Phone: +49/2722/61-0
Fax: +49/2722/61-1566

The Viega GmbH & Co. KG is represented by the general partners: Viega Management B.V. (Managing directors: Michael Klenz, Sebastian Lelgemann) and Viega Management GmbH (Managing directors: Michael Klenz, Sebastian Lelgemann)

The Submittal Package contains non-binding information that is being provided to you. All contents in the Submittal Package have been compiled with the greatest possible care and attention. Despite this, we are unable to guarantee that the information is up to date, accurate and complete. Placing an order does not automatically render the Submittal Package part of the contract.