

**Profipress G**

Submittal Package



# table of contents

1	Product group description	3
2	Permitted pipes	5
3	Certificates	6
4	Z dimensions	8
5	Imprint	20

# Product group description

Flow-optimised press connector system made of copper (99.9 % Cu-DHP), gunmetal or silicon bronze for copper pipes. Press connectors for protecting the sealing element equipped with cylindrical pipe guide. Press connectors from d64.0 with stainless steel cutting ring to ensure the mechanical strength of the connection. The pressing force is located before and behind the sealing element seat. Suitable for concealed and pre-wall installations of riser pipes and floor installations.

## Marking

Manufacturer, pipe dimension, batch, approval markings (DVGW), yellow dot on press end, yellow rectangle with inscription »Gas MOP 5 / GT1«, detachable orange label as press indicator from d64.0

## Press connector with SC-Contur

Inadvertently unpressed connections are noticed immediately during a leakage test.

Viega guarantees the detection of unpressed connections in the following pressure ranges with compressed air or inert gases:

min. air pressure: 22 hPa / 2.2 kPa / 22 mbar / 0.3 PSI

max. air pressure: 0.3 MPa / 300 kPa / 3 bar / 43.5 PSI

## Sealing elements

HNBR (hydrogenated acrylonitrile butadiene rubber), yellow, pre-assembled

## Dimensions

d12–64.0, size availability in accordance with the national regulations

## Tools

The functional safety of Viega press connector systems depends primarily on the faultless condition of the press tools used. Viega recommends the use of Viega press tools for pressing Viega press connectors. Viega press tools have to be regularly maintained by authorised service partners.

## Areas of application

Natural gas/liquid gas

Heating oil/diesel fuel (d12–54)

## Note

Use of the system for areas of application and media other than those described must be agreed in consultation with Viega! Detailed information about applications, restrictions and national standards and directives can be found in the product information, either printed or on the Viega website.

## Note – Standards and approvals

Press connectors tested in accordance with DVGW Worksheet W 534 with DVGW test mark.

Approval for d12–64.0 in accordance with DVGW-registration no. DG 4550AU0070.

Press connectors suitable for copper pipes in accordance with DIN EN 1057 and DVGW Worksheet GW 392.

Gases in accordance with DVGW G 260 in gas installations in accordance with DVGW-TRGI 2018 (DVGW Worksheet G 600) / DVFG-TRF 2021.

Liquid gases in the gas phase for domestic and commercial applications, tested in accordance with DVGW Worksheet G 5614.

Piping for heating oil in accordance with DIN 51603 and piping for diesel fuel as suction and pressure line in accordance with DIN EN 590 in consideration of the General Building Approval Z-38.4-71.

## Operating conditions gas and liquid gas installations

operating temperature -20 °C to +70 °C (-4 °F to +158 °F)

operating pressure max. 0.5 MPa / 5 bar / 72.5 PSI

operating pressure at HTB requirements 650°C (1202 °F)/30 minutes max. 0.1 MPa (1 bar; 14.5 PSI)

**Operating conditions heating oil and diesel fuel installation**

operating temperature max. 40 °C / 104 °F

operating pressure -0.05 to +0.5 MPa (-0.5 to +5 bar / -7.25 to +72.5 PSI)

Copper: 99.9 % Cu-DHP

gunmetal: CC499K

silicon bronze: CC246E / CuSi4Zn9MnP

**Subject to change without prior notice!**







Latest Z- and installation dimensions as well as further technical information can be found on the Viega website and have to be checked before purchase, planning, construction work and use. Our products are continuously optimised.






This product description contains important information on choice of product and system, mounting, commissioning as well as intended use and, if required, on maintenance measures. This information on products, their features and application techniques is based on currently valid standards in Europe (e.g. EN) and/or in Germany (e.g. DIN/DVGW). Some passages in the text may refer to technical regulations in Europe/Germany. These should be considered as recommendations for other countries where no corresponding national requirements exist. The relevant national laws, standards, regulations, directives and other technical provisions take priority over the German/European directives specified in this product description: The information herein is not binding for other countries and regions and should be understood as recommendation.

## Permitted pipes

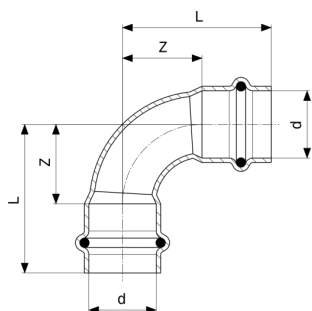
standard	DN	external Ø	wall thickness
copper DIN EN 1057	10	12	0.8 1.0
	12	15	1.0
	15	18	
	20	22	
	25	28	1.0 1.5
	32	35	1.2 1.5
	40	42	
	50	54	1.5 2.0
	60	64.0	2.0

# Certificates

	<p><b>ÖVGW certificate</b> Profipress G (d 12 - 64)</p>
	<p><b>ÖVGW certificate</b> Sanpress G (d 15 - 28)</p>
	<p><b>SAI StandardsMark Licence</b> Propress, Sanpress and Sanpress Inox</p>
<p>IGT</p>	<p><b>IGT Certificate</b> Profipress G</p>
<p>ARGB</p>	<p><b>gas.be - ARGB-KBVG Certificate</b> Profipress G (d 12-54)</p>
	<p><b>SVGW certificate</b> Profipress G (d 12 - 64)</p>
<p>SZU</p>	<p><b>SZU Certificate</b> Profipress G</p>
<p>AMTEC</p>	<p><b>AMTEC Certificate</b> Profipress, Sanpress, Sanpress Inox, Prestabo, Megapress, Profipress G, Sanpress Inox G, Megapress G</p>
	<p><b>DVGW type examination certificate</b> Profipress G (d 12 - 64)</p>
<p>BSI</p>	<p><b>BSI Kitemark Certificate (BS EN 1254-7)</b> Profipress, Profipress G</p>
	<p><b>IMQ Certificate</b> Profipress G</p>

	<p><b>IMQ Certificate</b> Profipress G XL</p>
	<p><b>Gastec Certificate</b> Profipress G</p>
	<p><b>Gastec Certificate</b> Profipress G (Hydrogen gas)</p>
	<p><b>INIG National Technical Assessment</b> Profipress G</p>
	<p><b>INIG National Certificate of Constancy of Performance</b> Profipress G</p>
<p>IZV</p>	<p><b>IZV Certificate</b> Profipress G, Profipress G XL</p>
<p>UKRCERTIFICATION</p>	<p><b>LLC UKRCertification Certificate of conformity</b> Profipress G</p>

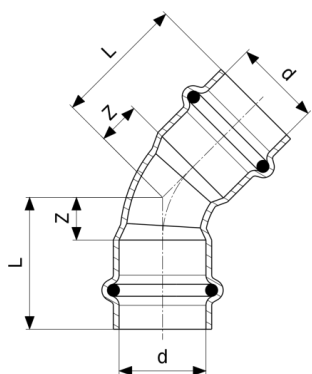
# Z dimensions



**Profipress G Elbow 90°**  
- copper  
**Model 2616**

Article	d	Z	L	Z*	L*
<b>346 850</b>	12	14	32		
<b>345 464</b>	15	16	38	18	40
<b>345 471</b>	18	18	40	22	44
<b>345 488</b>	22	26	49	19	42
<b>345 495</b>	28	31	55	34	58
<b>345 501</b>	35	33	59	42	68
<b>345 518</b>	42	33	69	50	86
<b>345 525</b>	54	55	95	65	105

Z\* = predecessor

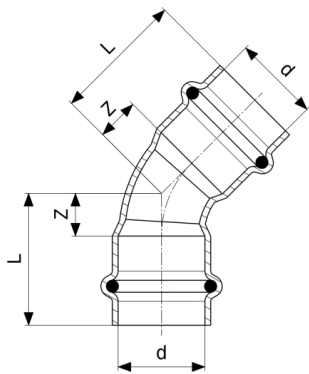


**Profipress G Elbow 45°**  
- copper  
**Model 2626**

Article	d	Z	L	Z*	L*
<b>346 898</b>	12	6	24		
<b>345 600</b>	15	7	29	8	30
<b>345 617</b>	18	7	29	9	31
<b>345 624</b>	22	11	34	9	32
<b>345 631</b>	28	12	36	14	38

Z\* = predecessor

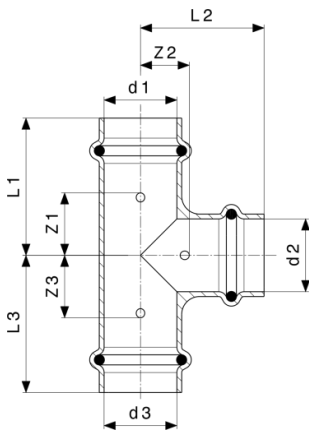




**Profipress G Elbow 45°**  
- copper  
**Model 2626**

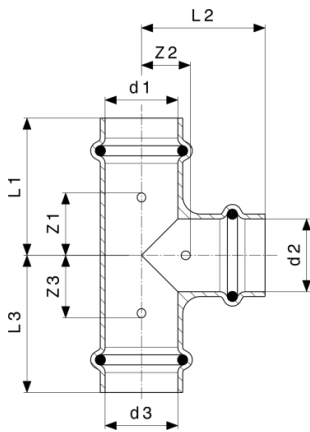
Article	d	Z	L	Z*	L*
<b>345 648</b>	35	15	41	17	43
<b>345 655</b>	42	17	53	21	57
<b>345 662</b>	54	22	62	27	67

Z\* = predecessor



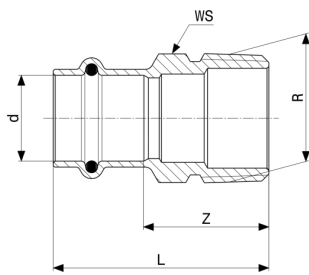
**Profipress G T-piece**  
- copper  
**Model 2618**

Article	d1	d2	d3	Z1	Z2	Z3	L1	L2	L3
<b>346 959</b>	12	12	12	17	9	17	36	27	36
<b>346 966</b>	12	15	12	20	10	20	38	32	38
<b>346 973</b>	15	12	12	17	12	21	39	30	39
<b>346 980</b>	15	12	15	16	12	16	39	30	39
<b>346 997</b>	15	15	12	23	11	18	41	33	41
<b>345 938</b>	15	15	15	19	11	19	41	33	41
<b>346 003</b>	18	15	18	18	13	18	41	35	41
<b>345 945</b>	18	18	18	20	13	20	42	35	42
<b>347 000</b>	22	12	22	16	15	16	39	33	39
<b>346 010</b>	22	15	15	25	15	17	47	37	41
<b>346 027</b>	22	15	22	18	15	18	41	37	41



**Profipress G T-piece**  
- copper  
**Model 2618**

Article	d1	d2	d3	Z1	Z2	Z3	L1	L2	L3
<b>346 034</b>	22	18	22	19	15	19	42	37	42
<b>346 041</b>	22	22	15	29	15	21	51	38	45
<b>345 952</b>	22	22	22	19	15	19	42	38	42
<b>346 058</b>	28	15	28	17	19	17	41	41	41
<b>633 851</b>	28	18	28	18	19	18	42	41	42
<b>346 065</b>	28	22	28	20	19	20	45	42	45
<b>345 969</b>	28	28	28	24	19	24	48	43	48
<b>346 072</b>	35	22	35	19	22	19	46	45	46
<b>346 089</b>	35	28	35	22	22	22	49	46	49
<b>345 976</b>	35	35	35	26	22	26	52	48	52
<b>664 589</b>	42	22	42	17	29	17	53	52	53
<b>346 096</b>	42	28	42	19	29	19	55	53	55
<b>346 102</b>	42	35	42	22	29	22	58	55	58
<b>345 983</b>	42	42	42	29	29	29	65	65	65
<b>664 572</b>	54	28	54	22	35	22	63	59	63
<b>346 119</b>	54	42	54	29	35	29	69	71	69
<b>345 990</b>	54	54	54	35	35	35	75	75	75



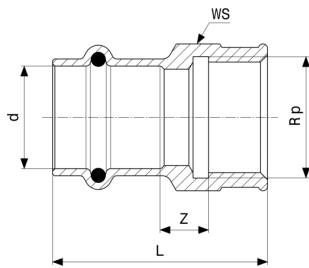
**Profipress G Adapter**  
- gunmetal  
**Model 2611**

Article	d	R	Z	L	WS	Z*	L*	WS*
<b>347 017</b>	12	¾	18	35	17	17	34	17
<b>347 024</b>	12	½	20	37	17	20	38	22
<b>346 126</b>	15	½	24	46	19	20	44	22
<b>346 133</b>	15	¾	28	50	22	28	48	27
<b>346 140</b>	18	½	23	45	22	21	43	22
<b>346 157</b>	18	¾	27	49	22	25	47	27
<b>346 164</b>	22	½	25	49	27	22	45	27
<b>346 171</b>	22	¾	26	49	27	27	50	27
<b>346 188</b>	22	1	33	56	30			
<b>346 270</b>	28	¾	29	52	33			
<b>346 287</b>	28	1	32	55	34			
<b>346 294</b>	28	1¼	35	58	34	38	62	42
<b>346 300</b>	35	1	28	53	39			
<b>346 317</b>	35	1¼	34	60	43	34	59	43
<b>346 324</b>	35	1½	37	62	50	35	60	50
<b>346 331</b>	42	1¼	29	65	47			
<b>346 348</b>	42	1½	30	66	50	31	67	50
<b>346 355</b>	54	1½	38	78	68			
<b>346 362</b>	54	2	39	79	66			

WS = wrench size

Z\* = predecessor

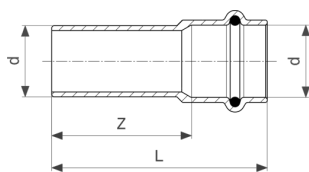
WS\* = predecessor (wrench size)



**Profipress G Adapter**  
- gunmetal  
**Model 2612**

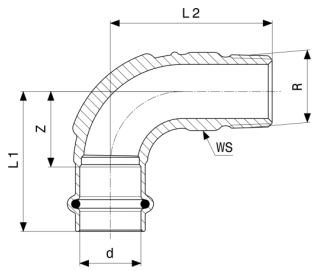
Article	d	Rp	Z	L	WS
347 031	12	3/8	3	32	21
347 048	12	1/2	7	39	26
346 379	15	1/2	7	44	26
346 386	15	3/4	10	45	31
346 393	18	1/2	7	43	26
346 409	18	3/4	10	45	31
346 416	22	1/2	6	44	26
346 423	22	3/4	11	47	31
435 158	22	1	9	52	38
346 430	28	1	9	52	38
346 447	35	1 1/4	14	54	47
346 454	42	1 1/2	10	69	53
571 986	54	1 1/2	11	72	68
346 461	54	2	19	80	70

WS = wrench size



**Profipress G Adapter**  
- gunmetal  
**Model 2613**

Article	d	Z	L
443 153	12	24	41
378 790	15	29	51
378 806	18	30	52
378 813	22	43	67
378 820	28	44	68

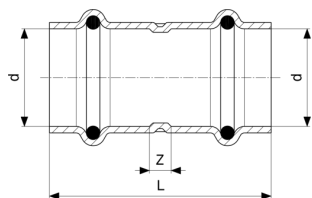


**Profipress G Adapter elbow 90°**  
- gunmetal  
**Model 2614**

Article	d	R	Z	L1	L2	WS	Z*	L1*	L2*
<b>346 911</b>	12	3/8	19	37	40	15			
<b>346 928</b>	12	1/2	19	37	44	17			
<b>345 747</b>	15	1/2	17	39	35	20	23	45	47
<b>345 754</b>	18	1/2	24	46	50	21			
<b>345 761</b>	18	3/4	24	46	55	27			
<b>345 778</b>	22	3/4	28	51	59	27			
<b>345 785</b>	28	1	35	58	72	36			
<b>345 792</b>	35	1 1/4	48	74	88	44			
<b>345 808</b>	42	1 1/2	56	92	98	52			
<b>345 815</b>	54	2	70	110	120	61			

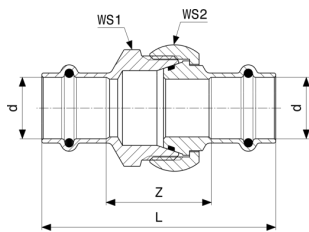
WS = wrench size

Z\* = predecessor



**Profipress G Coupling**  
- copper  
**Model 2615**

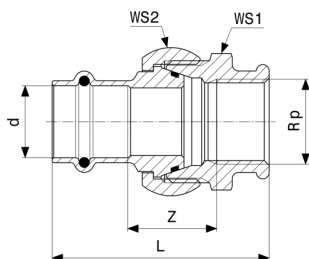
Article	d	Z	L
<b>347 055</b>	12	3	39
<b>346 485</b>	15	3	47
<b>346 492</b>	18	5	49
<b>346 508</b>	22	5	51
<b>346 515</b>	28	4	52
<b>346 522</b>	35	4	56
<b>346 539</b>	42	4	76
<b>346 546</b>	54	4	84



**Profipress G Screw fitting**  
- gunmetal  
**Model 2650**

Article	d	Z	L	WS1	WS2
<b>379 254</b>	15	33	77	31	34
<b>379 261</b>	18	40	84	40	41
<b>379 278</b>	22	39	86	40	41
<b>379 285</b>	28	47	94	45	48
<b>379 292</b>	35	45	96	55	58
<b>379 308</b>	42	45	117	68	72
<b>379 315</b>	54	56	136	76	84

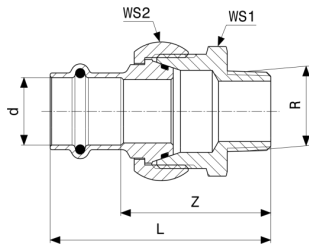
WS = wrench size



**Profipress G Adapter union**  
- gunmetal  
**Model 2652**

Article	d	Rp	Z	L	WS1	WS2
<b>379 322</b>	15	½	27	64	31	34
<b>379 339</b>	18	½	29	66	40	41
<b>379 346</b>	22	¾	28	68	40	41
<b>379 353</b>	28	1	59	83	45	48
<b>379 360</b>	35	1¼	33	80	55	68
<b>379 377</b>	42	1½	38	95	68	72
<b>379 384</b>	54	2	47	113	76	84

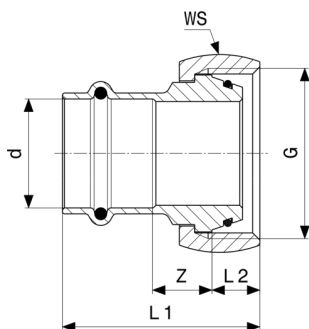
WS = wrench size



**Profipress G Adapter union**  
- gunmetal  
**Model 2654**

Article	d	R	Z	L	WS1	WS2
<b>632 458</b>	12	½	43	61	31	34
<b>379 391</b>	15	½	44	66	31	34
<b>390 662</b>	15	¾	47	69	31	34
<b>379 407</b>	18	½	49	71	40	41
<b>390 679</b>	18	¾	50	72	40	41
<b>379 414</b>	22	¾	50	74	40	41
<b>390 686</b>	22	1	55	79	40	41
<b>477 981</b>	28	¾	60	83	45	48
<b>379 421</b>	28	1	59	83	45	48
<b>379 438</b>	35	1¼	63	89	55	58
<b>379 445</b>	42	1½	66	102	68	72
<b>379 452</b>	54	2	76	116	76	84

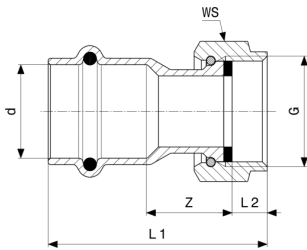
WS = wrench size



**Profipress G Connection screw fitting**  
- gunmetal  
**Model 2661**

Article	d	G	Z	L1	L2	WS
<b>351 113</b>	15	⅞	10	41	10	34
<b>534 745</b>	18	1⅞	15	50	13	48
<b>351 120</b>	22	1⅞	12	46	11	41
<b>408 237</b>	22	1⅞	15	51	13	48
<b>351 137</b>	28	1⅞	16	52	13	48

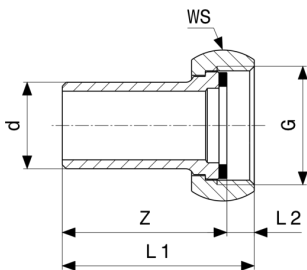
WS = wrench size



**Profipress G Connection screw fitting**  
- gunmetal  
**Model 2666**

Article	d	G	Z	L1	L2	WS
638 474	15	½	15	44	7	24
638 481	18	½	17	46	7	24
638 498	22	¾	21	52	8	30
638 559	22	7/8	19	50	8	34
638 504	28	1	19	50	8	37
477 455	28	1¼	18	52	10	46
490 829	28	1½	15	50	11	52
638 511	35	1½	18	54	10	53

WS = wrench size

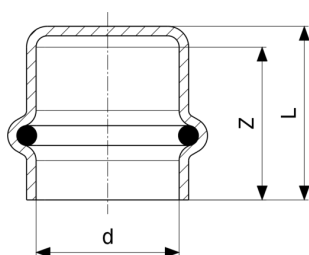


**Profipress G Connection screw fitting**  
- gunmetal  
**Model 2664**

Article	d	G	Z	L1	L2	WS
677 718	14	M20/150	38	45	8	23

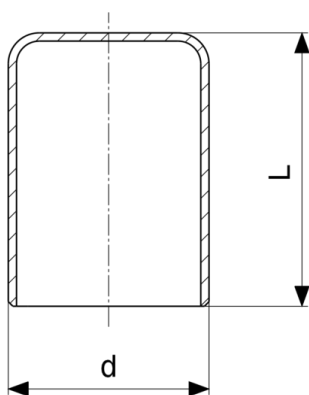
WS = wrench size





**Profipress G Cap**  
- copper  
**Model 2656**

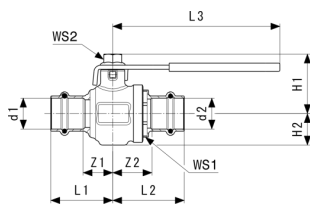
Article	d	Z	L
<b>438 722</b>	12	20	23
<b>352 790</b>	15	22	25
<b>352 806</b>	18	24	27
<b>352 813</b>	22	25	28
<b>352 820</b>	28	26	29
<b>352 837</b>	35	29	32
<b>352 844</b>	42	38	42
<b>352 851</b>	54	42	46



**Profipress Plug**  
- copper  
**Model 2457**

Article	d	L
<b>330 903</b>	15	29
<b>330 897</b>	18	29
<b>314 576</b>	22	30
<b>314 569</b>	28	31
<b>314 545*</b>	42	46
<b>314 538*</b>	54	55

\* = Discontinued, limited availability

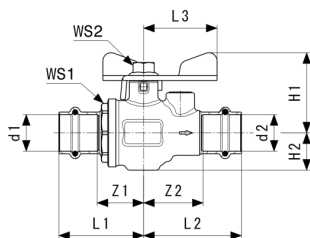


**Profipress G Gas ball valve  
Model 2670**

Article	d1	d2	Z1	Z2	L1	L2	L3	H1	H2	WS1
<b>492 854</b>	15	15	20	26	42	48	121	41	19	27
<b>492 861</b>	18	18	20	26	42	48	121	41	19	27
<b>492 878</b>	22	22	22	29	45	52	121	43	23	34
<b>492 885</b>	28	28	26	36	50	59	121	47	27	41
<b>492 892</b>	35	35	24	39	50	64	155	56	28	46
<b>492 908</b>	42	42	30	34	66	70	155	63	39	60
<b>492 915</b>	54	54	40	44	80	84	155	69	45	74

Article	WS2
<b>492 854</b>	13
<b>492 861</b>	13
<b>492 878</b>	13
<b>492 885</b>	13
<b>492 892</b>	13
<b>492 908</b>	13
<b>492 915</b>	13

d = Pipe external diameter  
WS = wrench size

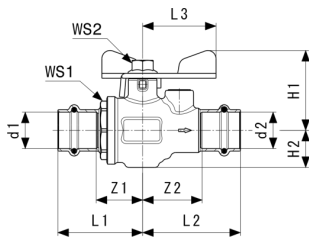


**Profipress G Gas ball valve  
Model 2671**

Article	d1	d2	Z1	Z2	L1	L2	L3	H1	H2	WS1
<b>587 437*</b>	18		30	38	52	60	45	47	19	27
<b>587 444</b>	22	22	29	37	52	60	45	49	23	50
<b>587 451</b>	28	28	36	41	59	64	45	53	27	41

d = Pipe external diameter  
WS = wrench size

\* = Discontinued, limited availability



**Profipress G Gas ball valve  
Model 2671**

Article	WS2
<b>587 437*</b>	13
<b>587 444</b>	13
<b>587 451</b>	13

d = Pipe external diameter

WS = wrench size

\* = Discontinued, limited availability

# Imprint

**Viega GmbH & Co. KG**

Viega Platz 1  
57439 Attendorn  
Germany  
Phone: +49/2722/61-0  
Fax: +49/2722/61-1566

The Viega GmbH & Co. KG is represented by the general partners: Viega Management B.V. (Managing directors: Michael Klenz, Sebastian Lelgemann) and Viega Management GmbH (Managing directors: Michael Klenz, Sebastian Lelgemann)

The Submittal Package contains non-binding information that is being provided to you. All contents in the Submittal Package have been compiled with the greatest possible care and attention. Despite this, we are unable to guarantee that the information is up to date, accurate and complete. Placing an order does not automatically render the Submittal Package part of the contract.