

**Pexfit Pro**

Submittal Package

SG



# table of contents

1	Product group description	3
2	Permitted pipes	5
3	Certificates	7
4	Z dimensions	11
5	Imprint	19

# Product group description

Press connector system with press connections made of gunmetal and multi-layer pipes. Multi-layer pipe, dimensionally stable, oxygen seal, colour: white. Press connectors with stainless steel press sleeves to ensure the leak tightness and mechanical strength of the connection. For protection pipes are equipped with pipe plugs. Suitable for concealed and pre-wall installations of riser pipes and floor installations.

## Marking

Manufacturer, pipe dimension, batch, green dot on press end, grey pipe plug, system approvals

## Press connector with SC-Contur

Inadvertently unpressed connections become visibly leaky when the system is filled.

Viega guarantees the detection of unpressed connections in the following pressure ranges:

min. water pressure: 0.1 MPa / 100 kPa / 1 bar / 14.5 PSI

max. water pressure: 0.65 MPa / 650 kPa / 6.5 bar / 94.3 PSI

min. air pressure: 22 hPa / 2.2 kPa / 22 mbar / 0.3 PSI

max. air pressure: 0.3 MPa / 300 kPa / 3 bar / 43.5 PSI

## Dimensions

d16–63

## Tools

The functional safety of Viega press connector systems depends primarily on the faultless condition of the press tools used. Viega recommends the use of Viega press tools for pressing Viega press connectors. Viega press tools have to be regularly maintained by authorised service partners.

## Areas of application

Potable water

Heating systems

Rainwater

Compressed air systems

## Note

The press connector system Pexfit Pro is suitable for the creation of potable water installations according to DIN 1988-200 and EN 806-2 in consideration of the selection of material in accordance with DIN EN 12502-1 and according to the evaluation basis for metallic materials in contact with potable water of the Umweltbundesamt (UBA) ( German Federal Environment Agency). When used for other areas of use and when in doubt about the right selection of material, please contact Viega. Detailed information about applications, restrictions and national standards and directives can be found in the product information, either printed or on the Viega website.

## Operating conditions for potable water installations

operating temperature max. 70 °C / 158 °F

operating pressure max. 1.0 MPa / 10 bar / 145 PSI

## Operating conditions heating installations

operating temperature max. 80 °C / 176 °F

operating pressure max. 1.0 MPa / 10 bar / 145 PSI

## Operating conditions gas installations

operating temperature -20 °C to +70 °C (-4 °F to +158 °F)

operating pressure max. 0.5 MPa / 5 bar / 72.5 PSI

Irrelevant of the flow direction, mixed installations are permitted.

Gunmetal: CC499K

**Subject to change without prior notice!**

Latest Z- and installation dimensions as well as further technical information can be found on the Viega website and have to be checked before purchase, planning, construction work and use. Our products are continuously optimised.







This product description contains important information on choice of product and system, mounting, commissioning as well as intended use and, if required, on maintenance measures. This information on products, their features and application techniques is based on currently valid standards in Europe (e.g. EN) and/or in Germany (e.g. DIN/DVGW). Some passages in the text may refer to technical regulations in Europe/Germany. These should be considered as recommendations for other countries where no corresponding national requirements exist. The relevant national laws, standards, regulations, directives and other technical provisions take priority over the German/European directives specified in this product description: The information herein is not binding for other countries and regions and should be understood as recommendation.



# Permitted pipes

pipe material	Model	Article	external Ø	wall thickness
PE-Xc/Al/PE-Xc	4705	607 210	16	2.0
PE-Xc/Al/PE-Xc	4705	607 234	20	2.3
PE-Xc/Al/PE-Xc	4705	607 241	25	2.8
PE-Xc/Al/PE-Xc	4705	699 208	32	3.2
PE-Xc/Al/PE-Xc	4705.1	679 606	16	2.0
PE-Xc/Al/PE-Xc	4703	607 258		2.0
PE-Xc/Al/PE-Xc	4703	607 272	20	2.3
PE-Xc/Al/PE-Xc	4703	607 289	25	2.8
PE-Xc/Al/PE-Xc	4703	586 935	32	3.2
PE-Xc/Al/PE-Xc	4703	586 942	40	3.5
PE-Xc/Al/PE-Xc	4703	588 052	50	4.0
PE-Xc/Al/PE-Xc	4703	588 069	63	4.5
PE-Xc/Al/PE-Xc	4704	607 302	16	25.0
PE-Xc/Al/PE-Xc	4704	607 326	20	28.0
PE-Xc/Al/PE-Xc	4704	761 455	25	34.0
PE-Xc/Al/PE-Xc	4704.1	691 455	16	2.0
PE-Xc/Al/PE-Xc	4704.1	691 462		2.0
PE-Xc/Al/PE-Xc	4704.1	691 479	20	2.3
PE-Xc/Al/PE-Xc	4704.1	691 486		2.3
PE-Xc/Al/PE-Xc	4705.5	734 060	16	2.0
PE-Xc/Al/PE-Xc	4705.5	751 401		2.0
PE-Xc/Al/PE-Xc	4705.5	734 077	20	2.3
PE-Xc/Al/PE-Xc	4705.5	751 418		2.3
PE-Xc/Al/PE-Xc	4705.6	607 388	25	2.8
PE-Xc/Al/PE-Xc	4705.6	784 805		2.8
PE-Xc/Al/PE-Xc	4705.6	761 202	32	3.2
PE-Xc/Al/PE-Xc	4705.6	784 812		3.2
PE-RT/Al/PE-RT	4708	662 585	16	2.0
PE-RT/Al/PE-RT	4708	662 592	20	2.3
PE-RT/Al/PE-RT	4708.1	662 608	16	2.0
PE-RT/Al/PE-RT	4708.1	662 615	20	2.3
PE-RT/Al/PE-RT	4708.5	662 622	16	2.0
PE-RT/Al/PE-RT	4708.5	662 639	20	2.3
PE-Xc	2004	776 022	21	
PE-Xc	2004	105 761	25	
PE-Xc	2004	110 604	28	

pipe material	Model	Article	external Ø	wall thickness
PE-Xc	2004	103 460	34	
PE-Xc	2004	110 499	42	


## Certificates

Dubai	<b>Dubai Central laboratory Department Attestation of Conformity</b> Viega Smartpress, metal fittings for plastic piping system
	<b>BCCA Certificate</b> Viega Smartpress
BULGARKONTROLA	<b>BULGARKONTROLA Certificate of Conformity</b> Viega Smartpress
VUPS	<b>VUPS Certificate</b> Viega Smartpress
	<b>DVGW type examination certificate (distributor certificat for Viega India)</b> Pexfit Pro (d 32 - 63)
	<b>AENOR Certificate</b> Viega Smartpress
	<b>CSTB QB Certificate</b> Viega Smartpress
	<b>WRAS Certificate</b> Viega Smartpress
EMI	<b>EMI certificate</b> Profipress, Sanpress, Easytop, Sanpress Inox, Pexfit Pro Fosta, Smartpress, gunmetal threaded fittings
EMI	<b>EMI Certificate of Constancy of Performance</b> Smartpress/Pexfit Pro
	<b>IKRAM Product Certificate of Conformity</b> Smartpress/Pexfit Pro, PPSU fittings

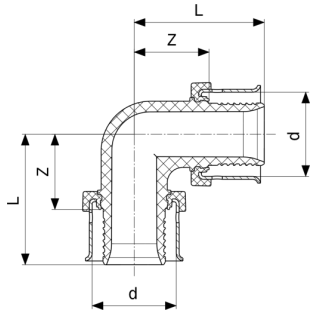
	<p><b>IKRAM Product Certificate of Conformity</b> Pexfit Pro, copper alloy fittings</p>
	<p><b>IKRAM Product Certificate of Conformity</b> Smartpress/Pexfit Pro, PE-Xc/Al/PE-Xc</p>
	<p><b>KOMO Product certificate</b> Pexfit Pro PE-Xc/Al/PE-Xc piping system</p>
	<p><b>KOMO Product certificate</b> Pexfit Pro PE-RT/Al/PE-RT piping system</p>
	<p><b>KOMO Product certificate</b> Metal fittings for plastics piping system Pexfit Pro/Smartpress</p>
	<p><b>KIWA Product certificate</b> Pexfit Pro PE-Xc/Al/PE-Xc piping system</p>
	<p><b>KIWA Product certificate</b> Metal fittings for plastic piping system Pexfit Pro/Smartpress</p>
	<p><b>KIWA Product certificate</b> Pexfit Pro PE-RT/Al/PE-RT piping system</p>
	<p><b>KIWA Product certificate</b> PE-RT pipes</p>
	<p><b>KIWA Product certificate</b> Pexfit Pro PE-RT piping system</p>
	<p><b>KOMO Product certificate</b> PE-RT/Al pipes</p>



	<b>KOMO Product certificate</b> PPSU Fittings
	<b>KOMO Product certificate</b> PE-Xc/Al pipes
	<b>KOMO Product certificate</b> Viega Smartpress PE-Xc/Al/PE-Xc piping system
	<b>KOMO Product certificate</b> Viega Smartpress PE-RT/Al/PE-RT piping system
	<b>KIWA Product certificate</b> PE-RT/Al pipes
	<b>KIWA Product certificate</b> PPSU Fittings
	<b>KIWA Product certificate</b> PE-Xc/Al pipes
	<b>KIWA Product certificate</b> Viega Smartpress PE-Xc/Al/PE-Xc piping system
	<b>KIWA Product certificate</b> Viega Smartpress PE-RT/Al/PE-RT piping system
EITS	<b>EITS Technical Approval</b> Viega Smartpress
EITS	<b>EITS Certificate</b> Viega Smartpress
	<b>RISE Certificate</b> viega Smartpress

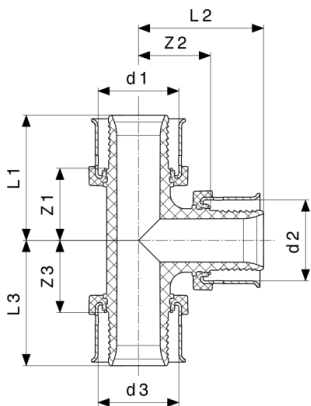
	<p><b>SGBC Certificate</b> Pexfit Pro</p>
<p>STL</p>	<p><b>Singapore Test Lab Test Certificate</b> Smartpress</p>
<p>SLS</p>	<p><b>SLS Test Certificate</b> Pexfit Pro</p>
<p>UKRCERTIFICATION</p>	<p><b>LLC UKRCertification Certificate of conformity</b> Pexfit Pro, Smartpress</p>

# Z dimensions



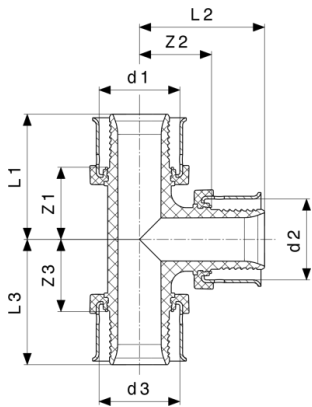
**Viega Smartpress/Pexfit Pro Elbow 90°**  
- PPSU  
**Model 4716**

Article	d	Z	L
<b>608 613</b>	16	16	30
<b>608 637</b>	20	18	31
<b>608 644</b>	25	21	38



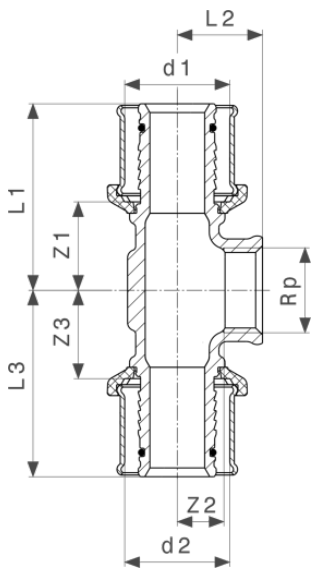
**Viega Smartpress/Pexfit Pro T-piece**  
- PPSU  
**Model 4718**

Article	d1	d2	d3	Z1	Z2	Z3	L1	L2	L3
<b>608 781</b>	16	16	16	16	16	16	30	30	30
<b>608 842</b>	16	20	16	18	16	18	31	30	31
<b>608 880</b>	20	16	16	16	18	16	29	31	29
<b>608 897</b>	20	16	20	16	18	16	29	31	29
<b>608 903</b>	20	20	16	18	18	18	32	32	32
<b>608 804</b>	20	20	20	18	18	18	32	32	32
<b>608 910</b>	25	16	16	17	21	17	34	34	30
<b>608 927</b>	25	16	20	17	21	17	34	34	30
<b>608 934</b>	25	16	25	17	21	17	34	34	34
<b>608 965</b>	25	20	20	18	21	18	36	34	32
<b>608 972</b>	25	20	25	18	21	18	36	34	36



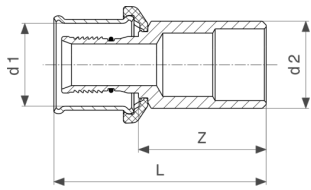
**Viega Smartpress/Pexfit Pro T-piece**  
- PPSU  
**Model 4718**

Article	d1	d2	d3	Z1	Z2	Z3	L1	L2	L3
<b>608 941</b>	25	25	16	21	21	21	38	38	34
<b>608 958</b>	25	25	20	21	21	21	38	38	34
<b>608 811</b>	25	25	25	21	21	21	38	38	38



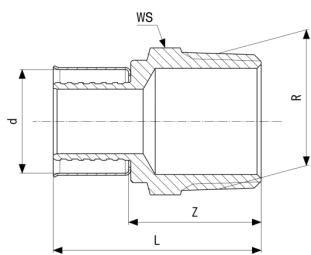
**Pexfit Pro T-piece**  
- gunmetal  
**Model 2717**

Article	d1	Rp	d2	Z1	Z2	Z3	L1	L2	L3
<b>588 298</b>	32	3/4	32	26	8	26	54	24	54
<b>588 311</b>	50	3/4	50	35	18	35	70	35	70



**Pexfit Pro Plug-in piece**  
- gunmetal  
**Model 2713**

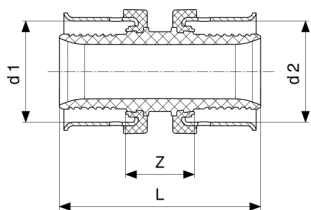
Article	d1	d2	Z	L
<b>588 434</b>	32	28	36	64



**Pexfit Pro Adapter**  
- gunmetal  
**Model 2711**

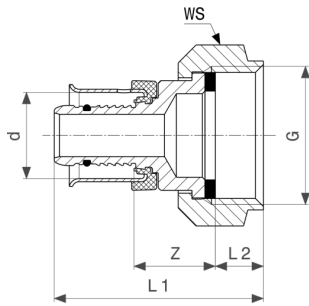
Article	d	R	Z	L	WS
<b>588 137</b>	32	1	40	68	34
<b>588 144</b>	32	1¼	43	71	43
<b>588 151</b>	40	1¼	41	71	43
<b>588 168</b>	50	1¼	43	79	47
<b>588 175</b>	63	2	49	91	68

WS = wrench size



**Viega Smartpress/Pexfit Pro Coupling**  
- PPSU  
**Model 4715**

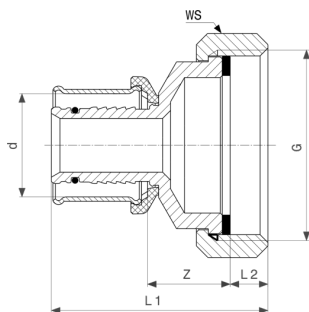
Article	d1	d2	Z	L
<b>608 668</b>	16	16	14	41
<b>608 729</b>	20	16	14	41
<b>608 682</b>	20	20	14	41
<b>608 743</b>	25	16	14	45
<b>608 736</b>	25	20	14	45
<b>608 699</b>	25	25	14	49



**Pexfit Pro Connection screw fitting**  
- gunmetal  
**Model 4763**

Article	d	G	Z	L1	L2	WS
<b>636 258</b>	16	3/8	20	42	7	22
<b>608 378</b>	16	1/2	17	37	5	23
<b>608 385</b>	16	3/4	16	40	9	30
<b>608 415</b>	20	1/2	20	43	7	24
<b>608 422</b>	20	3/4	21	47	9	30
<b>608 439</b>	25	3/4	22	48	8	30

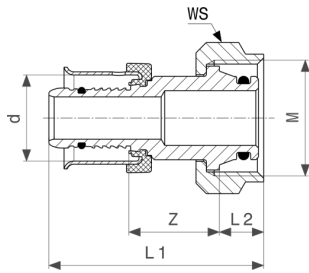
WS = wrench size



**Pexfit Pro Connection screw fitting**  
- gunmetal  
**Model 2763**

Article	d	G	Z	L1	L2	WS
<b>588 403</b>	32	1 1/4	14	55	12	50
<b>588 410</b>	40	1 1/4	26	66	10	46
<b>588 427</b>	50	1 3/4	17	62	10	59

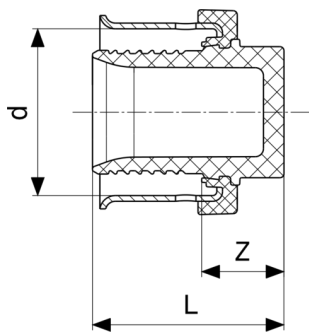
WS = wrench size



**Pexfit Pro Connection screw fitting**  
- gunmetal  
**Model 4783**

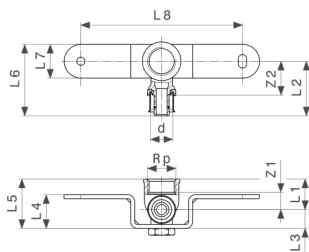
Article	d	M	Z	L1	L2	WS
608 446	16	22	18	42	9	26
608 453	16	24	20	45	10	27

WS = wrench size



**Viega Smartpress/Pexfit Pro Cap**  
- PPSU  
**Model 4756**

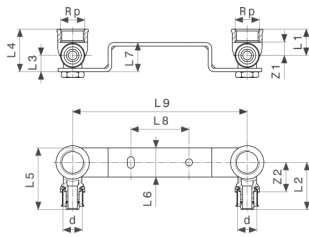
Article	d	Z	L
608 569	16	9	23
608 583	20	9	23
608 590	25	10	27



**Pexfit Pro Mounting unit**  
**Model 4723**

Article	d	Rp	Z1	Z2	L1	L2	L3	L4	L5	L6
688 639	16	½	8	25	23	38	14	25	37	51

Article	d	Rp	L7	L8
688 639	16	½	25	120

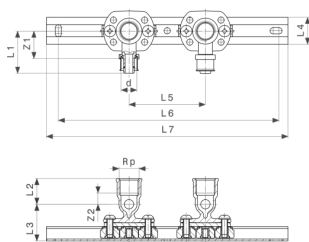


**Pexfit Pro Mounting unit**  
- gunmetal  
**Model 4724**

Article	d	Rp	DG	Z1	Z2	L1	L2	L3	L4	L5
688 622	16	½	150	8	25	23	38	14	37	51

Article	d	Rp	DG	L6	L7	L8	L9
688 622	16	½	150	25	25	50	150

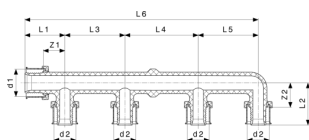
DG = depth gauge



**Pexfit Pro Mounting unit**  
- galvanised steel  
**Model 4741**

Article	d	Rp	Z1	Z2	L1	L2	L3	L4	L5	L6
636 470	16	½	31	7	47	22	32	28	80	231

Article	d	Rp	L7
636 470	16	½	253

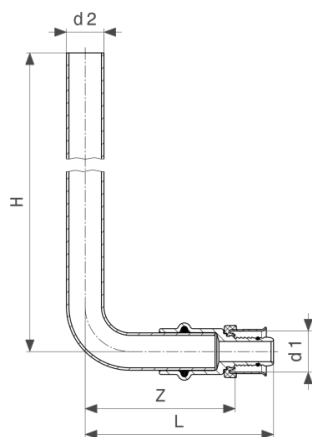


**Viega Smartpress/Pexfit Pro Manifold**  
- PPSU  
**Model 4733**

Article	d1	d2	Z1	Z2	L1	L2	L3	L4	L5	L6
610 111*	20	16	16	18	30	32	45	55		130
610 135*	20	16	16	18	30	32	45	55	45	175
610 098	20	16	17	18	30	32	45			75

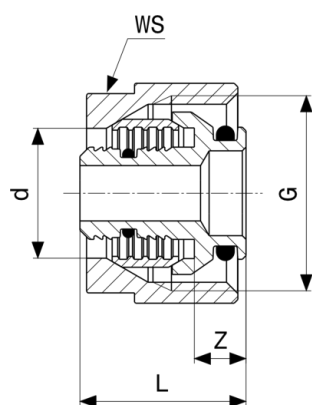
\* = Discontinued, limited availability





**Pexfit Pro Connection elbow set  
Model 4777**

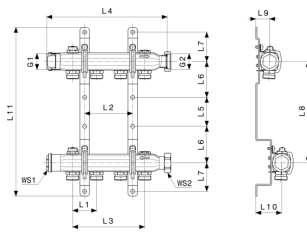
Article	d1	d2	T	H	Z	L	H
645 090	16	15	52	350	63	78	350



**Connection screw fitting**  
- brass nickel-plated  
**Model 1037**

Article	d	G	Z	L	WS
614 522	16	3/4	6	25	27

WS = wrench size



**Manifold**  
- stainless steel  
**Model 1078**

Article	n	L1	L2	L3	L4	L5	L6	L7	L8	L9
<b>586 225</b>	2	50			142	60	75	60	210	28
<b>586 232</b>	3	50	50	100	192	60	75	60	210	28
<b>586 249</b>	4	50	100	150	242	60	75	60	210	28
<b>587 550</b>	5	50	150	200	292	60	75	60	210	28
<b>587 567</b>	6	50	200	250	342	60	75	60	210	28
<b>587 574</b>	7	50	250	300	392	60	75	60	210	28
<b>587 581</b>	8	50	300	350	442	60	75	60	210	28
<b>587 598</b>	9	50	350	400	492	60	75	60	210	28
<b>587 604</b>	10	50	400	450	542	60	75	60	210	28
<b>587 611</b>	11	50	450	500	592	60	75	60	210	28
<b>587 628</b>	12	50	500	550	642	60	75	60	210	28

Article	n	L10	L11	WS1	WS2	G1	G2
<b>586 225</b>	2	53	350	25	37	¾	1
<b>586 232</b>	3	53	350	25	37	¾	1
<b>586 249</b>	4	53	350	25	37	¾	1
<b>587 550</b>	5	53	350	27	37	¾	1
<b>587 567</b>	6	53	350	25	37	¾	1
<b>587 574</b>	7	53	350	25	37	¾	1
<b>587 581</b>	8	55		25	37	¾	1
<b>587 598</b>	9	55		25	37	¾	1
<b>587 604</b>	10	53	350	25	37	¾	1
<b>587 611</b>	11	53	350	25	37	¾	1
<b>587 628</b>	12	53	350	25	37	¾	1

WS = wrench size

# Imprint

**Viega GmbH & Co. KG**

Viega Platz 1  
57439 Attendorn  
Germany  
Phone: +49/2722/61-0  
Fax: +49/2722/61-1566

The Viega GmbH & Co. KG is represented by the general partners: Viega Management B.V. (Managing directors: Michael Klenz, Sebastian Lelgemann) and Viega Management GmbH (Managing directors: Michael Klenz, Sebastian Lelgemann)

The Submittal Package contains non-binding information that is being provided to you. All contents in the Submittal Package have been compiled with the greatest possible care and attention. Despite this, we are unable to guarantee that the information is up to date, accurate and complete. Placing an order does not automatically render the Submittal Package part of the contract.