

Viega Smartpress

Submittal Package



table of contents

1	Product group description	3
2	Permitted pipes	5
3	Certificates	6
4	Z dimensions	10
5	Imprint	42

Product group description

Flow-optimised press connector system with press connectors made of gunmetal and stainless steel and multi-layer pipes. Multi-layer pipe, dimensionally stable, oxygen seal, colour: white. Press connectors with PPSU support body to ensure the leak tightness and mechanical strength of the connection. Safe and fast connection without widening or calibration of the pipe ends through O-ring-free press technology in all pipe dimensions. For protection pipes are equipped with pipe plugs. Suitable for concealed and pre-wall installations of riser pipes and floor installations.

Multi-layer pipe

exterior colour white

suitable for potable water and heating installations

Marking

Manufacturer, pipe dimension, batch, green dot on press end, system approvals

Press connector with SC-Contur

Inadvertently unpressed connections become visibly leaky when the system is filled.

Viega guarantees the detection of unpressed connections in the following pressure ranges:

min. water pressure: 0.1 MPa / 100 kPa / 1 bar / 14.5 PSI

max. water pressure: 0.65 MPa / 650 kPa / 6.5 bar / 94.3 PSI

min. air pressure: 22 hPa / 2.2 kPa / 22 mbar / 0.3 PSI

max. air pressure: 0.3 MPa / 300 kPa / 3 bar / 43.5 PSI

Dimensions

d16–63

Tools

The functional safety of Viega press connector systems depends primarily on the faultless condition of the press tools used. Viega recommends the use of Viega press tools for pressing Viega press connectors. Viega press tools have to be regularly maintained by authorised service partners.

Areas of application

Potable water

Heating systems

Rainwater

Compressed air systems

Note

The press connector system Viega Smartpress is suitable for the creation of potable water installations according to DIN 1988-200 and EN 806-2 in consideration of the selection of material in accordance with DIN EN 12502-1 and according to the evaluation basis for metallic materials in contact with potable water of the Umweltbundesamt (UBA) (Federal Environment Agency). When used for other areas of use and when in doubt about the right selection of material, please contact Viega. Detailed information about applications, restrictions and national standards and directives can be found in the product information, either printed or on the Viega website.

Operating conditions for potable water installations

operating temperature max. 70 °C / 158 °F

operating pressure max. 1.0 MPa / 10 bar / 145 PSI

Operating conditions heating installations

operating temperature max. 80 °C / 176 °F

operating pressure max. 1.0 MPa / 10 bar / 145 PSI

Material press connector

Gunmetal: CC499K
stainless steel 1.4401

Pressure gradient calculator

Web application for quick and simple calculation of piping dimensions for potable water, heating and gas supply lines with associated pressure loss tables across the entire system.

Subject to change without prior notice!






Latest Z- and installation dimensions as well as further technical information can be found on the Viega website and have to be checked before purchase, planning, construction work and use. Our products are continuously optimised.











This product description contains important information on choice of product and system, mounting, commissioning as well as intended use and, if required, on maintenance measures. This information on products, their features and application techniques is based on currently valid standards in Europe (e.g. EN) and/or in Germany (e.g. DIN/DVGW). Some passages in the text may refer to technical regulations in Europe/Germany. These should be considered as recommendations for other countries where no corresponding national requirements exist. The relevant national laws, standards, regulations, directives and other technical provisions take priority over the German/European directives specified in this product description: The information herein is not binding for other countries and regions and should be understood as recommendation.








Permitted pipes


pipe material	Model	Article	external Ø	wall thickness
PE-Xc/Al/PE-Xc	4703	607 258	16	2.0
PE-Xc/Al/PE-Xc	4703	607 272	20	2.3
PE-Xc/Al/PE-Xc	4703	607 289	25	2.8
PE-Xc/Al/PE-Xc	4703	586 935	32	3.2
PE-Xc/Al/PE-Xc	4703	586 942	40	3.5
PE-Xc/Al/PE-Xc	4703	588 052	50	4.0
PE-Xc/Al/PE-Xc	4703	588 069	63	4.5
PE-Xc/Al/PE-Xc	4705	607 210	16	2.0
PE-Xc/Al/PE-Xc	4705	607 234	20	2.3
PE-Xc/Al/PE-Xc	4705	607 241	25	2.8
PE-Xc/Al/PE-Xc	4705	699 208	32	3.2
PE-Xc/Al/PE-Xc	4704	607 302	16	2.0
PE-Xc/Al/PE-Xc	4704	607 326	20	2.3
PE-Xc/Al/PE-Xc	4704	761 455	25	2.8
PE-Xc/Al/PE-Xc	4704.1	691 455	16	2.0
PE-Xc/Al/PE-Xc	4704.1	691 462		2.0
PE-Xc/Al/PE-Xc	4704.1	691 479	20	2.3
PE-Xc/Al/PE-Xc	4704.1	691 486		2.3
PE-Xc/Al/PE-Xc	4705.5	734 060	16	2.0
PE-Xc/Al/PE-Xc	4705.5	751 401		2.0
PE-Xc/Al/PE-Xc	4705.5	734 077	20	2.3
PE-Xc/Al/PE-Xc	4705.5	751 418		2.3
PE-Xc/Al/PE-Xc	4705.1	679 606	16	2.0
PE-Xc/Al/PE-Xc	4705.01	751 425		2.0
PE-Xc/Al/PE-Xc	4705.01	751 432		2.0
PE-RT/Al/PE-RT	4708	662 585	20	2.0
PE-RT/Al/PE-RT	4708	662 592		2.3
PE-RT/Al/PE-RT	4708.1	662 608	16	2.0
PE-RT/Al/PE-RT	4708.1	662 615	20	2.3
PE-RT/Al/PE-RT	4708.5	662 622	16	2.0
PE-RT/Al/PE-RT	4708.5	662 639	20	2.3
PE-Xc/Al/PE-Xc	4705.6	607 388	25	2.8
PE-Xc/Al/PE-Xc	4705.6	784 805		2.8
PE-Xc/Al/PE-Xc	4705.6	761 202	32	3.2
PE-Xc/Al/PE-Xc	4705.6	784 812		3.2

Certificates

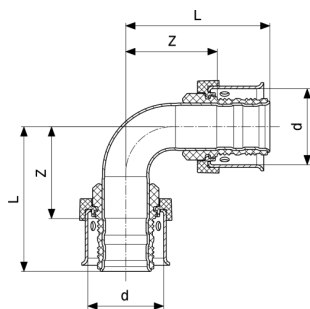
Dubai	Dubai Central laboratory Department Attestation of Conformity Viega Smartpress, metal fittings for plastic piping system
	BCCA Certificate Viega Smartpress
BULGARKONTROLA	BULGARKONTROLA Certificate of Conformity Viega Smartpress
RUE Stroy	RUE Stroytechnorm Certificate Viega Smartpress, Pexfit Pro with PE-Xc/Al/PE-Xc pipe
RUE Stroy	RUE Stroytechnorm Certificate Viega Smartpress, Pexfit Pro with PE-RT/Al/PE-RT pipe
VUPS	VUPS Certificate Viega Smartpress
	AENOR Certificate Viega Smartpress
	Eurofins Certificate Viega Smartpress
	CSTB QB Certificate Viega Smartpress
Eurofins	Eurofins Certificate of sanitary conformity (ACS) Viega Smartpress
	WRAS Certificate Viega Smartpress
VIK-HR	VIK-HR. Certificate Smartpress PE-Xc/Al/PE-Xc

EMI	<p>EMI certificate</p> <p>Profipress, Sanpress, Easytop, Sanpress Inox, Pexfit Pro Fosta, Smartpress, gunmetal threaded fittings</p>
EMI	<p>EMI Certificate of Constancy of Performance</p> <p>Smartpress/Pexfit Pro</p>
	<p>ICIM Hygiene certificate</p> <p>Profipress, Profipress XL, Sanpress Inox, Sanpress Inox XL, Sanpress, Sanpress XL, Sanfix Fosta, Raxofix, Smartpress, gunmetal threaded fittings, soldered fittings</p>
	<p>Gastec Certificate</p> <p>Smartpress G</p>
	<p>KOMO Product certificate</p> <p>Flexible corrugated protection pipes of PE</p>
	<p>KOMO Product certificate</p> <p>Metal fittings for plastics piping system Pexfit Pro/Smartpress</p>
	<p>KOMO Product certificate</p> <p>Viega Smartpress PE-Xc/Al/PE-Xc piping system</p>
	<p>KOMO Product certificate</p> <p>Viega Smartpress PE-RT/Al/PE-RT piping system</p>
	<p>KOMO Product certificate</p> <p>Viega Smartpress system with multilayer pipes Pexfit Fosta</p>
	<p>KIWA Product certificate</p> <p>Metal fittings for plastic piping system Pexfit Pro/Smartpress</p>
	<p>KIWA Product certificate</p> <p>Viega Smartpress PE-Xc/Al/PE-Xc piping system</p>
	<p>KIWA Product certificate</p> <p>Viega Smartpress PE-RT/Al/PE-RT piping system</p>

	<p>KIWA Product certificate Viega Smartpress sytem with multilayer pipes Pexfit Fosta</p>
	<p>KOMO Product certificate PE-RT/Al pipes</p>
	<p>KOMO Product certificate PPSU Fittings</p>
	<p>KOMO Product certificate PE-Xc/Al pipes</p>
	<p>KIWA Product certificate PE-RT/Al pipes</p>
	<p>KIWA Product certificate PPSU Fittings</p>
	<p>KIWA Product certificate PE-Xc/Al pipes</p>
<p>SINTEF</p>	<p>SINTEF Certificate Viega Smartpress</p>
<p>EITS</p>	<p>EITS Technical Approval Viega Smartpress</p>
<p>EITS</p>	<p>EITS Certificate Viega Smartpress</p>
<p>GOSSANE</p>	<p>GOSSANEPIDNADZOR Certificate Fittings made of bronze for Profipress, Megapress, Sanpress, Smartpress</p>
<p>ROSPOTREBNADZOR</p>	<p>ROSPOTREBNADZOR Certificate Fittings made of stainless steel</p>
<p>ROSPOTREBNADZOR</p>	<p>ROSPOTREBNADZOR Certificate Fittings made of PPSU</p>

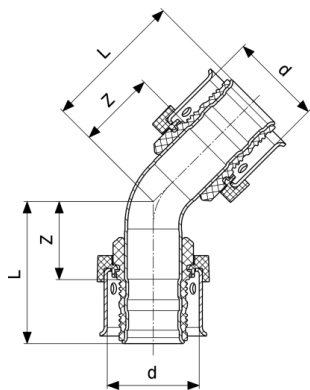
ROSPOTREBNADZOR	ROSPOTREBNADZOR Certificate Multilayer pipes
	RISE Certificate viega Smartpress
STL	Singapore Test Lab Test Certificate Smartpress
UKRCERTIFICATION	LLC UKRCertification Certificate of conformity Pexfit Pro, Smartpress

Z dimensions



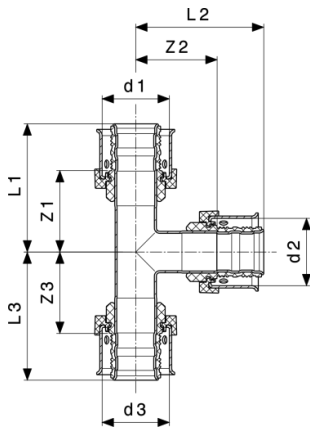
Viega Smartpress elbow 90°
- stainless steel
Model 6716

Article	d	Z	L
729 844	16	26	39
729 851	20	25	39
729 868	25	27	46
729 875	32	35	59
731 922	40	70	94
731 939	50	83	112
731 946	63	93	128



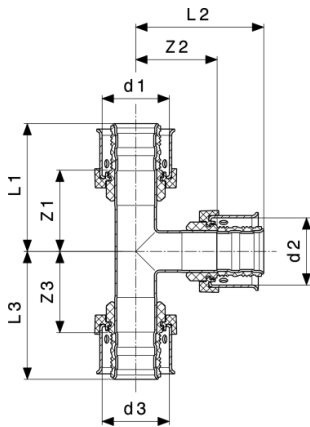
Viega Smartpress elbow 45°
- stainless steel
Model 6726

Article	d	Z	L
730 154	25	18	37
730 161	32	23	48
733 995	40	50	74
734 008	50	58	87
734 015	63	65	100



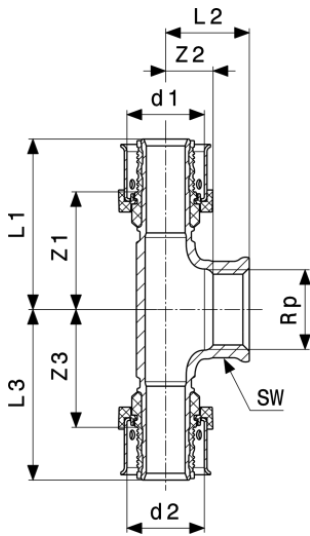
Viega Smartpress T-piece
- stainless steel
Model 6718

Article	d1	d2	d3	Z1	Z2	Z3	L1	L2	L3
729 929	16	16	16	27	27	27	40	40	40
729 936	16	20	16	28	24	26	42	38	42
729 967	20	16	16	31	31	26	44	44	40
729 950	20	16	20	24	28	24	38	42	38
729 974	20	20	16	24	24	27	38	38	42
729 943	20	20	20	24	24	24	38	38	38
730 048	25	16	16	25	31	30	43	45	44
730 000	25	16	20	25	31	29	43	45	43
729 998	25	16	25	25	31	25	43	45	43
730 017	25	20	20	25	29	29	43	43	43
730 024	25	20	25	25	29	25	43	43	43
730 055	25	25	16	25	25	30	43	43	44
730 031	25	25	20	25	25	29	43	43	43
729 981	25	25	25	25	25	25	43	43	43
730 079	32	16	25	31	33	27	55	46	45
730 086	32	16	32	26	35	26	50	48	50
730 093	32	20	25	31	31	27	55	45	45
730 109	32	20	32	26	33	26	50	47	50
730 116	32	25	25	31	26	27	55	45	45
730 123	32	25	32	26	28	26	50	47	50
730 062	32	32	32	28	28	28	53	53	53
732 769	40	25	32	52	35	38	76	53	63
732 776	40	25	40	52	35	52	76	53	76
732 783	40	32	32	53	34	41	76	58	65
732 790	40	32	40	53	34	53	76	58	76
732 752	40	40	40	52	53	52	76	76	75



Viega Smartpress T-piece
- stainless steel
Model 6718

Article	d1	d2	d3	Z1	Z2	Z3	L1	L2	L3
731 953	50	25	50	61	38	61	90	59	90
732 806	50	32	50	61	37	61	90	62	90
732 813	50	40	50	61	55	61	90	80	90
731 984	50	50	50	61	61	61	90	90	90
732 837	63	25	63	66	42	66	101	60	101
732 844	63	32	63	66	41	66	101	65	101
732 851	63	40	63	66	60	66	101	83	101
732 868	63	50	63	66	64	66	101	93	101
732 820	63	63	63	66	66	66	101	101	101



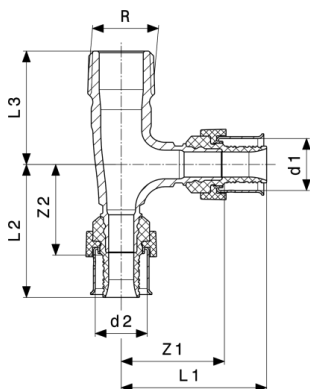
**Viega Smartpress T-piece
Model 6717**

Article	d1	Rp	d2	Z1	Z2	Z3	L1	L2	L3	SW
729 882 ¹	16	½	16	33	7	33	47	22	47	
729 899 ¹	20	½	20	31	7	31	45	22	45	
729 905 ¹	25	¾	25	33	9	33	52	25	52	
729 912 ¹	32	¾	32	36	12	36	61	28	61	
733 308 ²	40	1	40	53	23	53	76	43	76	36
733 315 ²	50	1	50	61	27	61	90	46	90	36
733 322 ²	63	1	63	66	30	66	101	50	101	36

SW = Spanner width

1) gunmetal

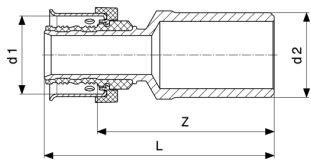
2) stainless steel



**Viega Smartpress T-piece
- gunmetal
Model 6726.4**

Article	R	d1	d2	Z1	Z2	L1	L2	L3	SW
730 444	½	16	16	33	29	47	43	36	18

SW = Spanner width

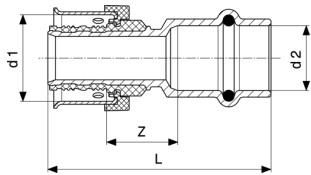


Viega Smartpress plug-in piece
- gunmetal
Model 6713

Article	VS	PMP	Z	L
729 660	16	15	47	60
729 677	20	22	47	60
729 684	25	22	46	65
729 691	32	28	49	74
733 421	40	35	72	95
733 438	50	42	86	115

VS = for Viega Smartpress

PMP = for press connectors of the metallic press systems

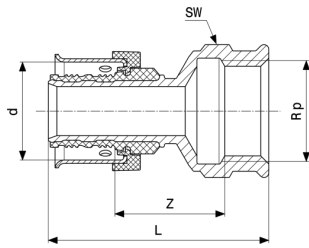


Viega Smartpress adapter
- gunmetal
Model 6713P

Article	VS	PMP	Z	L
753 894	16	12	21	52
730 451	16	15	21	56
730 468	20	15	17	53
756 086	20	22	21	59
730 475	25	22	20	61

VS = for Viega Smartpress

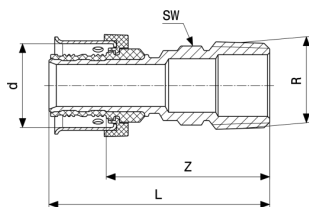
PMP = for press connectors of the metallic press systems



Viega Smartpress adapter
- gunmetal
Model 6712

Article	d	Rp	Z	L	SW
729 608	16	½	21	49	26
729 615	16	¾	23	52	31
729 622	20	½	17	46	26
729 639	20	¾	19	49	31
729 646	25	¾	18	53	31
729 653	32	1	20	64	38
733 391	40	1¼	42	87	47
733 407	50	1½	43	94	53
733 414	63	2	42	103	66

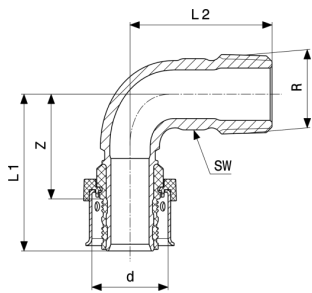
SW = Spanner width



Viega Smartpress adapter
- gunmetal
Model 6711

Article	d	R	Z	L	SW
729 523	16	⅝	39	53	14
729 530	16	½	43	57	18
729 547	16	¾	46	60	22
729 554	20	½	40	54	18
729 561	20	¾	42	56	22
729 578	25	¾	42	61	22
729 585	25	1	50	68	27
729 592	32	1	49	74	27
733 278	40	1¼	74	97	43
733 285	50	1½	75	104	50
733 292	63	2	82	117	62

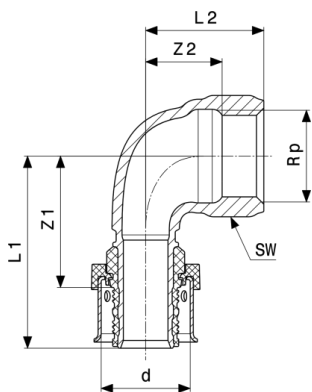
SW = Spanner width



Viega Smartpress adapter elbow 90°
- gunmetal
Model 6714

Article	d	R	Z	L1	L2	SW
729 707	16	½	33	47	36	18
729 714	20	½	28	42	38	18
729 721	20	¾	31	45	42	23
729 738	25	¾	31	50	44	23
729 745	32	1	38	63	52	29

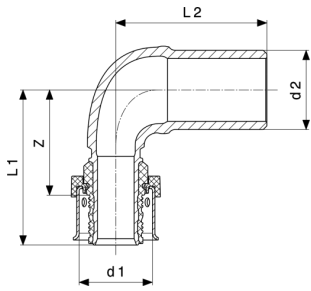
SW = Spanner width



Viega Smartpress adapter elbow 90°
- gunmetal
Model 6714.1

Article	d	Rp	Z1	Z2	L1	L2	SW
730 352	16	½	34	11	48	26	26
730 345	16	¾	32	12	46	23	22
730 369	20	½	30	12	44	27	26
730 376	20	¾	33	12	47	28	32
730 383	25	¾	34	11	53	27	32

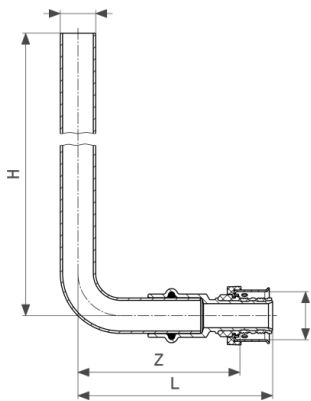
SW = Spanner width



Viega Smartpress plug-in elbow 90°
 - gunmetal
Model 6793

Article	VS	PMP	Z	L1	L2
730 321	16	15	28	41	38
730 338	20	22	29	43	42

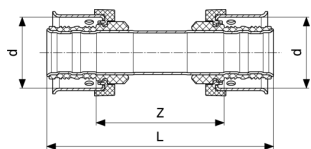
VS = for Viega Smartpress
 PMP = for press connectors of the metallic press systems



Viega Smartpress connection elbow
 - copper
Model 6776

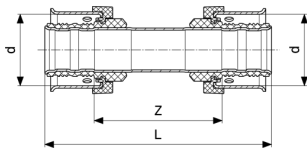
Article	VS	PMP	H	Z	L
753 863	16	12	200	76	89
750 169	16	15	200	76	89
756 079	16	15	350	76	89

VS = for Viega Smartpress
 PMP = for press connectors of the metallic press systems



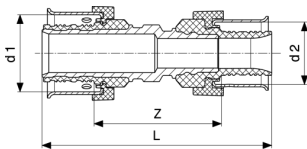
Viega Smartpress coupling
 - stainless steel
Model 6715

Article	d	Z	L
729 752	16	40	67
729 769	20	38	65



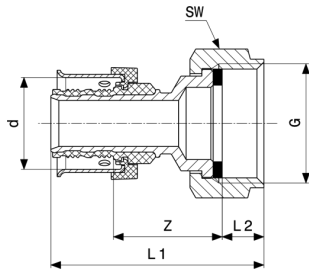
Viega Smartpress coupling
- stainless steel
Model 6715

Article	d	Z	L
729 783	25	39	77
729 813	32	43	92
733 339	40	73	120
733 353	50	75	133
733 377	63	80	150



Viega Smartpress reducing coupling
- gunmetal
Model 6715.2

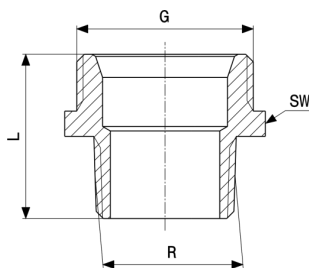
Article	d1	d2	Z	L
729 776	20	16	35	62
729 790	25	16	35	67
729 806	25	20	32	64
729 820	32	20	35	73
729 837	32	25	34	77
733 346	40	32	54	102
733 360	50	40	73	126
733 384	63	50	77	141



Viega Smartpress connection screw fitting
 - gunmetal
Model 6763

Article	d	G	Z	L1	L2	SW
730 208	16	½	27	43	5	23
730 215	16	¾	28	51	9	30
730 222	20	½	23	42	5	23
730 239	20	¾	24	47	9	30
730 246	25	¾	26	53	9	30
730 253	32	1¼	28	65	12	50
733 445	40	1¼	46	81	12	50
733 452	40	1½	49	82	9	52
733 469	50	1¾	50	89	10	59
733 476	50	2¾	54	94	11	75
733 483	63	2¾	54	98	11	75

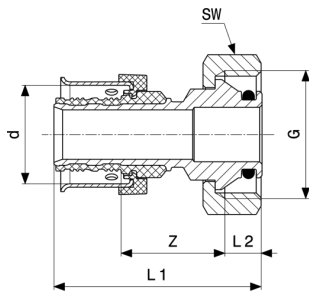
SW = Spanner width



Adapter nipple
 - gunmetal or silicon bronze
Model 3246

Article	R	G	L	SW
449 339	½	½	30	22
441 524	½	¾	21	27
449 346	¾	¾	33	28

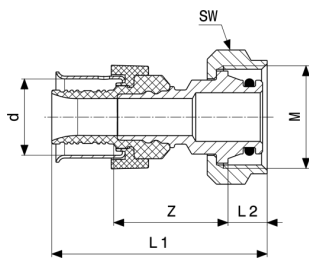
SW = Spanner width



Viega Smartpress connection screw fitting
- gunmetal
Model 6735

Article	d	G	Z	L1	L2	SW
730 598	16	¾	25	46	8	30
730 604	20	¾	22	43	8	30
730 611	25	¾	21	47	8	30

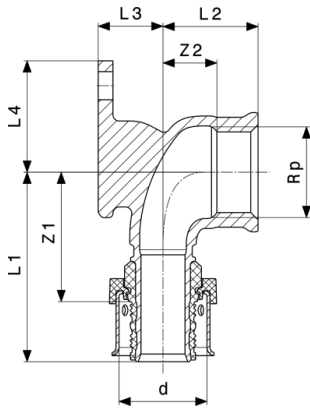
SW = Spanner width



Viega Smartpress connection screw fitting
- gunmetal
Model 6783

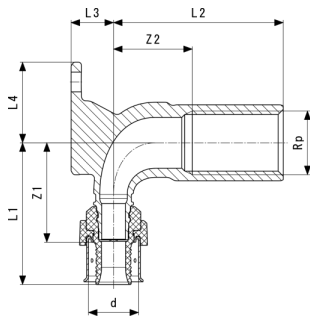
Article	d	M	Z	L1	L2	SW
730 307	16	22	25	48	9	26
730 314	16	24	26	49	10	27

SW = Spanner width



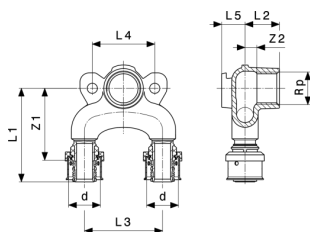
Viega Smartpress wall plate
- gunmetal
Model 6725.5

Article	d	Rp	Z1	Z2	L1	L2	L3	L4
729 479	16	½	33	7	47	22	13	27
729 486	20	½	30	7	44	22	15	27
729 493	20	¾	34	9	48	25	18	31



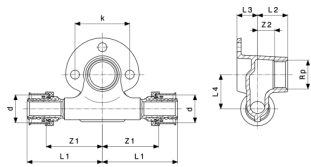
Viega Smartpress wall plate
- gunmetal
Model 6725

Article	Z1	Z2	L1	L2	L3	L4
783 921	33	26	47	56	14	27



Viega Smartpress double wall plate
- gunmetal
Model 6725.7

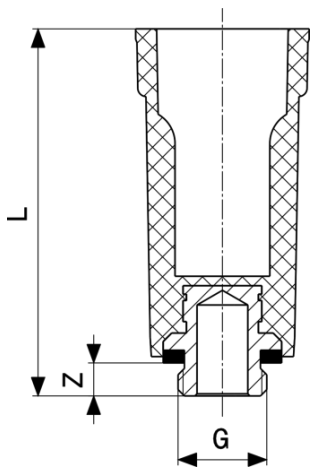
Article	d	Rp	Z1	Z2	L1	L2	L3	L4	L5
730 413	16	½	51	7	65	22	50	40	13
730 420	20	½	46	7	60	22	50	40	15
730 437	25	½	48	7	66	22	50	40	15



Viega Smartpress wall plate T-piece
 - gunmetal
Model 6724.3

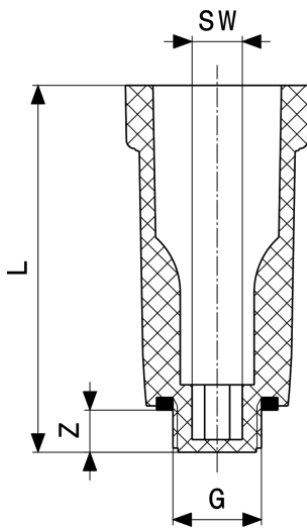
Article	d	Rp	Z1	Z2	L1	L2	L3	L4	k
729 509	16	½	46	7	60	22	13	25	40
729 516	20	½	41	7	55	22	15	25	40

k = Bolt circle Ø



Pressure test plug
 - plastic
Model 1516.113

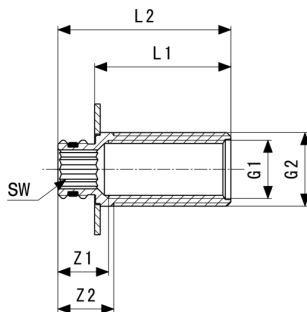
Article	G	Z	L
116 644	⅜	7	85
100 766	½	11	92
107 666	¾	9	87



Pressure test plug
- plastic
Model 1516

Article	G	Z	L	SW
107 796	3/8	10	87	8
100 124	1/2	10	87	10
102 746	3/4	13	90	14

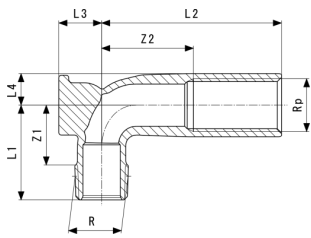
SW = Spanner width



Wall lead-in
Model 2032.1

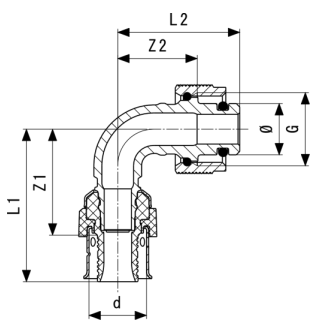
Article	G1	G2	L	Z1	Z2	L1	L2	SW
764 067	1/2	3/4	35	18	20	37	50	12
764 074	1/2	3/4	47	17	20	49	62	12

SW = Spanner width



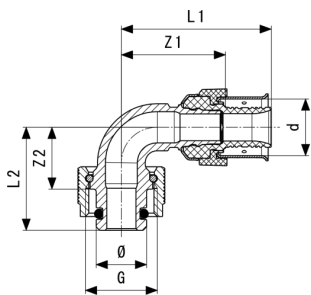
Wall plate for Prevista
- silicon bronze
Model 8055.2

Article	Z1	Z2	L1	L2	L3	L4
785 178	24	37	38	72	17	12



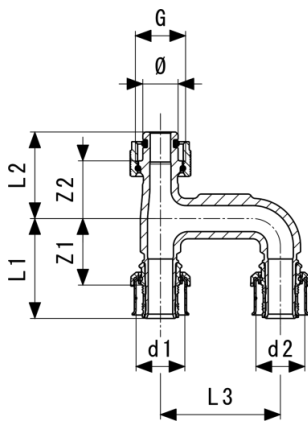
Viega Smartpress adapter elbow 90°
- gunmetal
Model 6716.8

Article	Ø	L2	L1	Z2	Z1
776 992	15	35	44	23	30



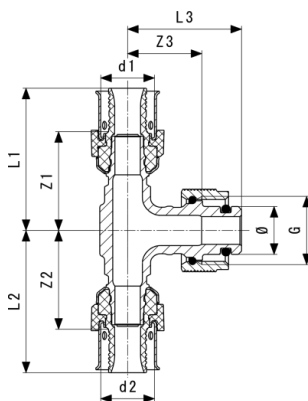
Viega Smartpress adapter elbow 90°
- gunmetal
Model 6716.81

Article	Ø	L2	L1	Z2	Z1
815 639	15	30	44	18	30



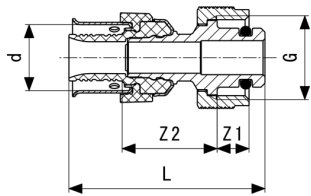
Viega Smartpress extension piece
- gunmetal
Model 6725.78

Article	d1	d2	G	Z1	Z2	L1	L2	L3	Ø
796 754	16	16	½	32	23	45	35	50	15
796 761	20	20	½	28	24	42	36	50	15
796 778	25	25	½	31	25	49	37	50	15



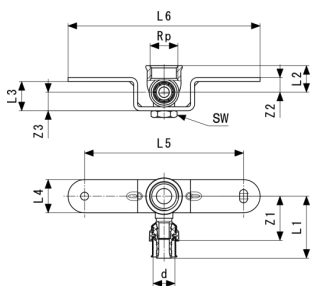
Viega Smartpress adapter T-piece
- gunmetal
Model 6718.8

Article	Ø	Z1	Z2	Z3	L2	L1	L3
777 012	15	27	27	24	41	41	36
777 005	15	30	30	23	44	44	35



Viega Smartpress adapter
- gunmetal
Model 6711.8

Article	Z1	Z2	L
776 985	8	24	49

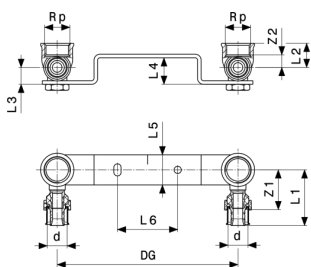


Viega Smartpress mounting unit
- galvanised steel
Model 6723

Article	d	Rp	Z1	Z2	Z3	L1	L2	L3	L4	L5
750 152	16	½	33	11	14	47	20	22	25	120

Article	d	Rp	L6	SW
750 152	16	½	145	17

SW = Spanner width

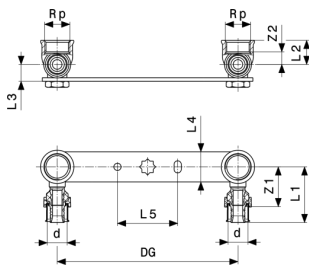


Viega Smartpress mounting unit
- galvanised steel
Model 6724

Article	d	Rp	DG	Z1	Z2	L1	L2	L3	L4	L5
730 130	16	¾	120	33	5	47	16	14	18	25
730 147	16	½	150	33	5	47	20	14	22	25

Article	d	Rp	DG	L6
730 130	16	¾	120	40
730 147	16	½	150	50

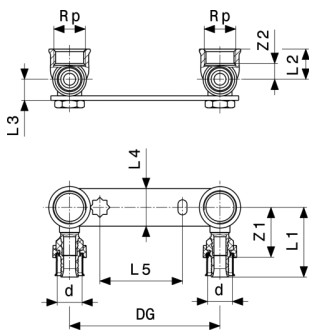
DG = Depth gauge



Viega Smartpress mounting unit
- galvanised steel
Model 6724.1

Article	d	Rp	DG	Z1	Z2	L1	L2	L3	L4	L5
730 390	16	½	150	33	8	47	20	14	25	50

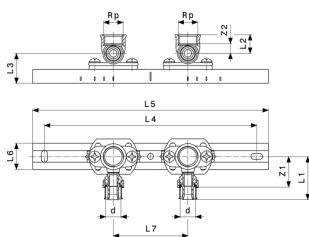
DG = Depth gauge



Viega Smartpress mounting unit
- galvanised steel
Model 6724.2

Article	d	Rp	DG	Z1	Z2	L1	L2	L3	L4	L5
730 406	16	½	80/100	33	5	47	20	14	25	55

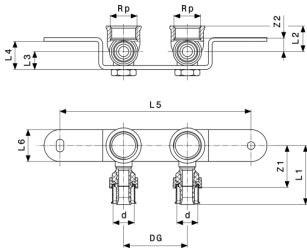
DG = Depth gauge



Viega Smartpress mounting unit
- galvanised steel
Model 6741

Article	d	Rp	Z1	Z2	L1	L2	L3	L4	L5	L6
730 628	16	½	33	7	47	22	32	228	253	28

Article	d	Rp	L7
730 628	16	½	80

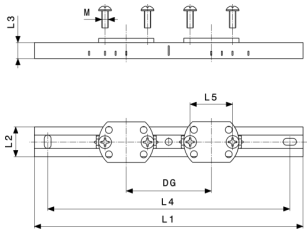


Viega Smartpress mounting unit
- galvanised steel
Model 6723.1

Article	d	Rp	DG	Z1	Z2	L1	L2	L3	L4	L5
730 499	16	½	35/45/50	33	5	47	20	10	22	150

Article	d	Rp	DG	L6
730 499	16	½	35/45/50	25

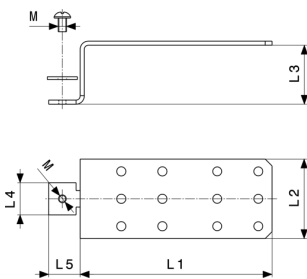
DG = Depth gauge



Mounting bracket
- galvanised steel
Model 2141.3

Article	DG	L1	L2	L3	L4	L5	M
581 701	80-150	253	28	15	228	40	6

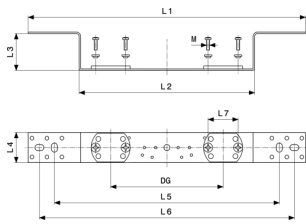
DG = Depth gauge
M = Thread type



Mounting bracket
- galvanised steel
Model 2141.4

Article	L1	L2	L3	L4	L5	M
586 706	140	58	43	24	23	6

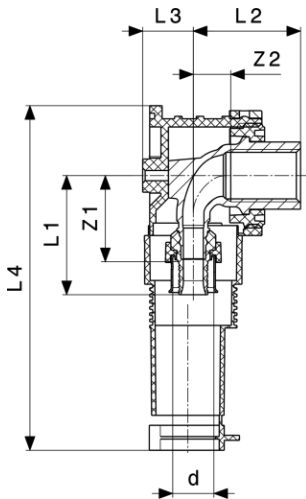
M = Thread type



Mounting bracket
- galvanised steel
Model 2021.7

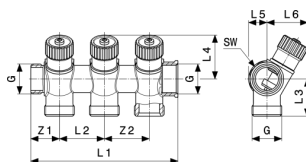
Article	DG	L1	L2	L3	L4	L5	L6	L7	M
651 350	70/100/150	370	234	48	40	300	340	40	4

DG = Depth gauge
M = Thread type



Viega Smartpress connection socket 90°
- gunmetal
Model 6720.01

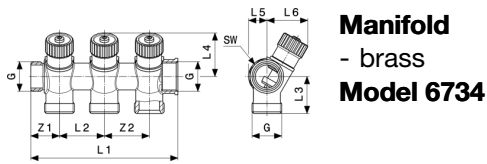
Article	d	Rp	Z1	Z2	L1	L2	L3	L4
730 581	16	½	34	15	48	43	20	138



Manifold
- brass
Model 6734

Article	n	G	d	Z1	Z2	L1	L2	L3	L4	L5
747 404	2	¾	¾	26		89		32	34	16
747 411	3	¾	¾	26	40	129	40	32	34	16
747 428	4	¾	¾	26	40	169	40	32	34	16

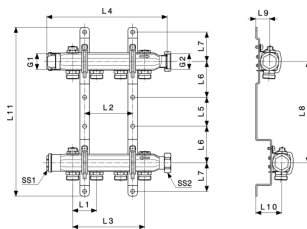
SW = Spanner width



Manifold
- brass
Model 6734

Article	n	G	d	L6	SW
747 404	2	¾	¾	40	31
747 411	3	¾	¾	40	31
747 428	4	¾	¾	40	31

SW = Spanner width

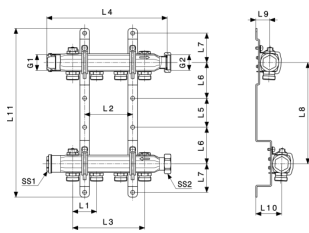


Manifold
- stainless steel
Model 1078

Article	n	L1	L2	L3	L4	L5	L6	L7	L8	L9
586 225	2	50			142	60	75	60	210	28
586 232	3	50	50	100	192	60	75	60	210	28
586 249	4	50	100	150	242	60	75	60	210	28
587 550	5	50	150	200	292	60	75	60	210	28
587 567	6	50	200	250	342	60	75	60	210	28
587 574	7	50	250	300	392	60	75	60	210	28
587 581	8	50	300	350	442	60	75	60	210	28
587 598	9	50	350	400	492	60	75	60	210	28
587 604	10	50	400	450	542	60	75	60	210	28
587 611	11	50	450	500	592	60	75	60	210	28
587 628	12	50	500	550	642	60	75	60	210	28

Article	n	L10	L11	SW1	SW2	G1	G2
586 225	2	53	350	25	37	¾	1
586 232	3	53	350	25	37	¾	1
586 249	4	53	350	25	37	¾	1
587 550	5	53	350	27	37	¾	1
587 567	6	53	350	25	37	¾	1
587 574	7	53	350	25	37	¾	1

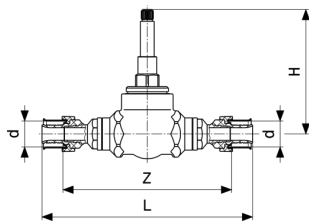
SW = Spanner width



Manifold
- stainless steel
Model 1078

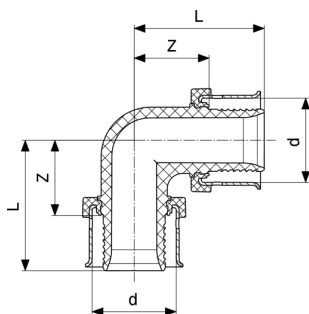
Article	n	L10	L11	SW1	SW2	G1	G2
587 581	8	55		25	37	3/4	1
587 598	9	55		25	37	3/4	1
587 604	10	53	350	25	37	3/4	1
587 611	11	53	350	25	37	3/4	1
587 628	12	53	350	25	37	3/4	1

SW = Spanner width



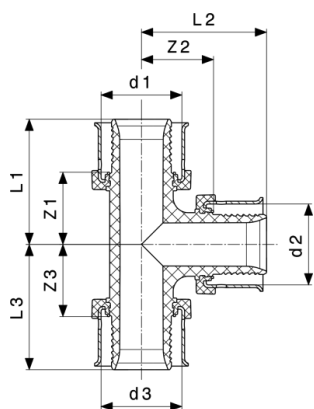
Viega Smartpress concealed free-flow valve
- brass
Model 6770

Article	d	Z	L	H
730 260	16	109	136	79
730 277	20	101	129	79



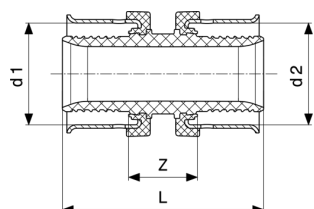
Viega Smartpress/Pexfit Pro elbow 90°
- PSU
Model 4716

Article	d	Z	L
608 613	16	16	30
608 637	20	18	31
608 644	25	21	38



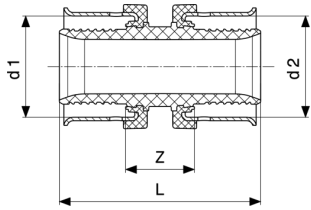
Viega Smartpress/Pexfit Pro T-piece
- PPSU
Model 4718

Article	d1	d2	d3	Z1	Z2	Z3	L1	L2	L3
608 781	16	16	16	16	16	16	30	30	30
608 842	16	20	16	18	16	18	31	30	31
608 880	20	16	16	16	18	16	29	31	29
608 897	20	16	20	16	18	16	29	31	29
608 903	20	20	16	18	18	18	32	32	32
608 804	20	20	20	18	18	18	32	32	32
608 910	25	16	16	17	21	17	34	34	30
608 927	25	16	20	17	21	17	34	34	30
608 934	25	16	25	17	21	17	34	34	34
608 965	25	20	20	18	21	18	36	34	32
608 972	25	20	25	18	21	18	36	34	36
608 941	25	25	16	21	21	21	38	38	34
608 958	25	25	20	21	21	21	38	38	34
608 811	25	25	25	21	21	21	38	38	38



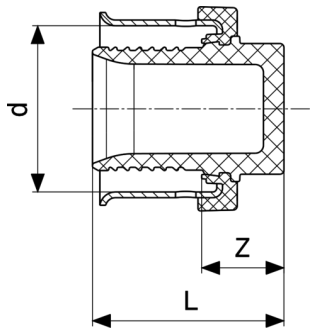
Viega Smartpress/Pexfit Pro coupling
- PPSU
Model 4715

Article	d1	d2	Z	L
608 668	16	16	14	41
608 729	20	16	14	41
608 682	20	20	14	41
608 743	25	16	14	45



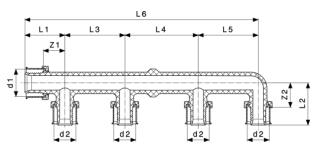
Viega Smartpress/Pexfit Pro coupling
- PPSU
Model 4715

Article	d1	d2	Z	L
608 736	25	20	14	45
608 699	25	25	14	49



Viega Smartpress/Pexfit Pro cap
- PPSU
Model 4756

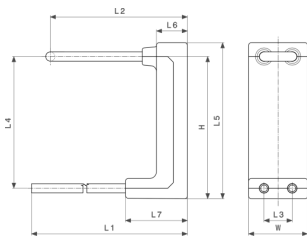
Article	d	Z	L
608 569	16	9	23
608 583	20	9	23
608 590	25	10	27



Viega Smartpress/Pexfit Pro manifold
- PPSU
Model 4733

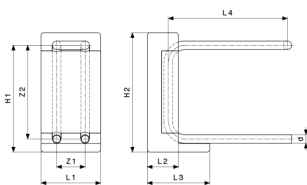
Article	d1	d2	Z1	Z2	L1	L2	L3	L4	L5	L6
610 111*	20	16	16	18	30	32	45	55		130
610 135*	20	16	16	18	30	32	45	55	45	175
610 098	20	16	17	18	30	32	45			75

* = Discontinued, limited availability



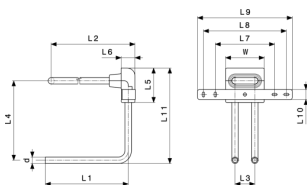
Viega Smartpress radiator connection block
- multi-layer pipe
Model 6797.6

Article	H	L1	L2	L3	L4	L5	L6	L7	W
730 512	250	423	244	50	233	275	55	110	105



Radiator connection block
Model 1097.6

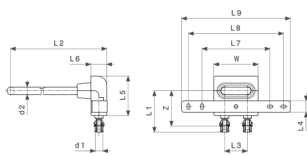
Article	d	Z1	Z2	L1	L2	L3	L4	H1	H2
364 045	15	50	165	105	55	110	210	188	210
379 698	15	50	235	105	55	110	210	258	280



Viega Smartpress radiator connection block
- multi-layer pipe
Model 6797.7

Article	d	L1	L2	L3	L4	L5	L6	L7	L8	L9
730 529	16	210	392	50	200	87	35	150	210	240

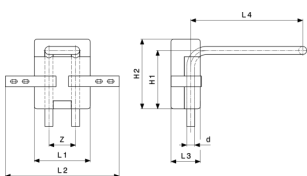
Article	d	L10	L11	W
730 529	16	25	232	98



Viega Smartpress radiator connection block
- stainless steel
Model 6775.31

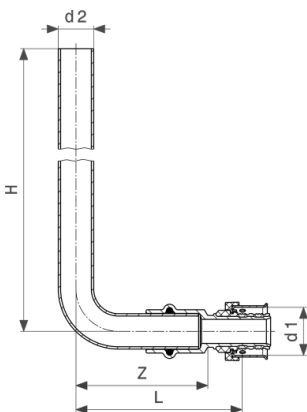
Article	d1	d2	Z	L1	L2	L3	L4	L5	L6	L7
730 505	16	15	78	91	395	50	25	87	34	150

Article	d1	d2	L8	L9	W
730 505	16	15	210	240	98



Radiator connection block
Model 1097.9

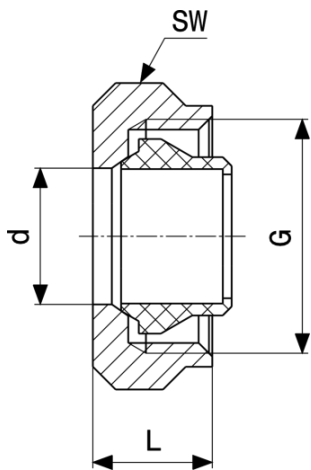
Article	d	H	Z	L1	L2	L3	L4	H1	H2
586 379	15	150	50	105	214	55	210	109	130



Viega Smartpress radiator connection set
- stainless steel
Model 6777

Article	VS	PMP	H	Z	L
730 291	16	15	350	73	86

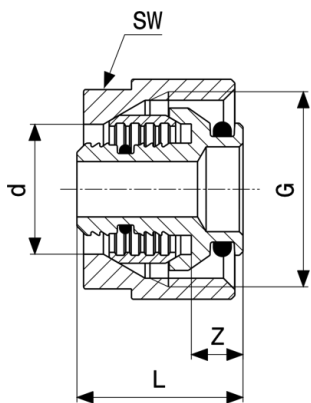
VS = for Viega Smartpress
PMP = for press connectors of the metallic press systems



Connection screw fitting
- brass nickel-plated
Model 94385.2

Article	d	G	L	SW
636 050	15	3/4	14	30

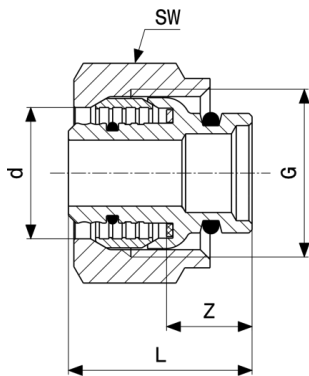
SW = Spanner width



Connection screw fitting
- brass nickel-plated
Model 1037

Article	d	G	Z	L	SW
614 522	16	3/4	6	25	27

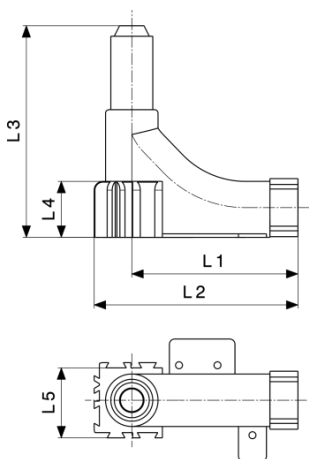
SW = Spanner width



Clamping ring screw fitting
- brass
Model 1019

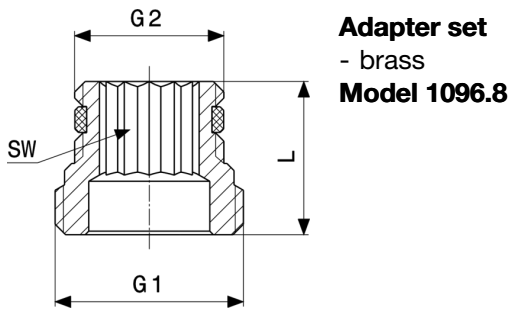
Article	d	s	Z	L	SW	G
356 682	16	2	13	29	30	¾

SW = Spanner width



Pipe guide elbow 90°
Model 1072.3

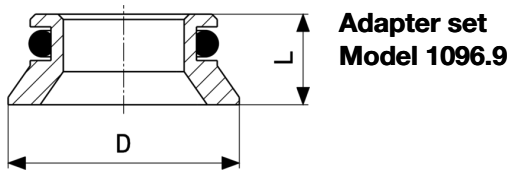
Article	L1	L2	L3	L4	L5
309 855	95	117	121	32	37



Adapter set
- brass
Model 1096.8

Article	G1	G2	L	SW
357 122	½	¾	22	12

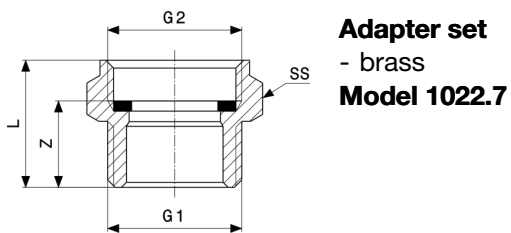
SW = Spanner width



Adapter set
Model 1096.9

Article	D	L
308 872	22	9

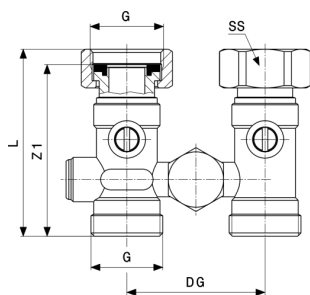
D = External diameter



Adapter set
- brass
Model 1022.7

Article	G1	G2	Z	L	SW
279 547	¾	¾	14	22	30

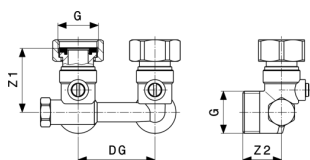
SW = Spanner width



Radiator connection piece
- brass matt nickel-plated
Model 1096.0

Article	G	DG	Z1	L	SW
359 096	¾	50	62	68	30

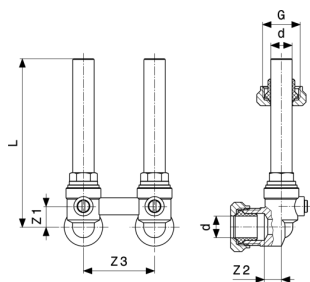
DG = Depth gauge
SW = Spanner width



Radiator connection piece
- brass matt nickel-plated
Model 1097.0

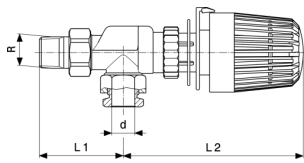
Article	G	DG	Z1	Z2	L	SW
359 126	¾	50	43	25	47	30

DG = Depth gauge
SW = Spanner width



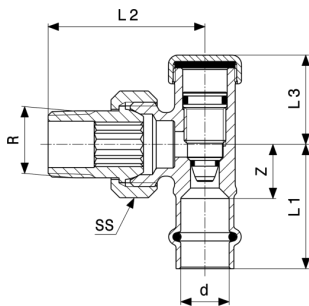
Radiator connection set
- brass matt nickel-plated
Model 1097.7

Article	d	G	Z1	Z2	Z3	L
364 052	15	¾	15	11	50	118



Radiator axial valve
- brass nickel-plated
Model 1075.96

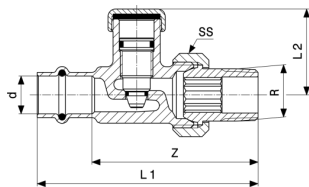
Article	d	R	L1	L2
360 405	15	½	56	120



Sanpress return pipe screw fitting
- gunmetal
Model 2272.1

Article	d	R	Z	L1	L2	L3	SW
326 357	15	½	17	39	50	28	29

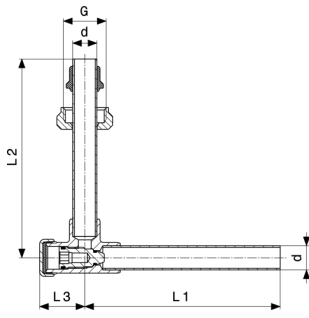
SW = Spanner width



Sanpress return pipe screw fitting
- gunmetal
Model 2272.2

Article	d	R	Z	L1	L2	SW
326 364	15	½	67	89	35	29

SW = Spanner width



Radiator connection set
 - brass nickel-plated
Model 2272.5

Article	d	G	L1	L2	L3
360 399	15	3/4	121	123	28

Imprint

Viega GmbH & Co. KG

Viega Platz 1
57439 Attendorn
Germany
Phone: +49/2722/61-0
Fax: +49/2722/61-1566

The Viega GmbH & Co. KG is represented by the general partners: Viega Management B.V. (Managing directors: Michael Klenz, Sebastian Leigemann) and Viega Management GmbH (Managing directors: Michael Klenz, Sebastian Leigemann)

The Submittal Package contains non-binding information that is being provided to you. All contents in the Submittal Package have been compiled with the greatest possible care and attention. Despite this, we are unable to guarantee that the information is up to date, accurate and complete. Placing an order does not automatically render the Submittal Package part of the contract.