

**Vītņu veidgabali no bronzas vai silīcijbronzas
iesniegšanas pakete**



satura

| | | |
|---|-------------------------|----|
| 1 | Produktu grupu apraksts | 3 |
| 2 | Sertifikāti | 4 |
| 3 | Z izmēri | 5 |
| 4 | Uzņēmuma dati | 38 |

Produktu grupu apraksts

Vītņu veidgabali no bronzas vai silikonbronzas, ar neapstrādātu vai hromētu virsmu.

Apzīmējumi

Ražotājs, cauruļu izmērs, partija

Bīvelementi

R ārējā vītne rūpnīcā sarievota – iespējama aptīšana ar pakulām bez vītnes raupjošanas.

Izmēri

1/8–4

Norāde

Vītņu veidgabali no bronzas vai silīcijbronzas ir piemēroti dzeramā ūdens sistēmu izveidei atbilstoši DIN 1988-200 un EN 806-2, ievērojot materiāla izvēli atbilstoši DIN EN 12502-1 un saskaņā ar Federālās vides aģentūras (UBA) novērtējuma bāzi metāliskajiem materiāliem, kas nonāk saskarē ar dzeramo ūdeni. Pielietojot citiem nolūkiem vai rodoties šaubām par pareizu materiāla izvēli griezieties kompānijā Viega. Sistēmas sastāvdaļas ir jāaizsargā pret augstu hlorīda koncentrāciju gan šķidrumā/gāzē, gan ārējā iedarbībā. Detalizētu informāciju par lietošanu, ierobežojumiem un valsts standartiem un direktīvām meklējiet ražojuma informācijā drukātā veidā vai Viega tīmekļa vietnē.

Norāde normas und pielaiides

Vītņu veidgabali no bronzas vai silikonbronzas atbilstoši DIN EN 10226, 1. daļai, apstiprināti dzeramā ūdens instalācijām atbilstoši DIN 1988 un gāzes instalācijām atbilstoši DVGW-TRGI 2018 (DVGW regula G 600) (ievērojiet piezīmes pie modeļa), testēti atbilstoši DVGW regulai GW 6 un DIN 3523.

Vītņu veidgabals no bronzas vai silikonbronzas - pielaiide atbilstoši DVGW reģ. Nr. DV-7401AO2957.

Presējamo veidgabalu materiāls

Bronza: CC499K



silīcija bronza: CC 246E / CuSi4Zn9MnP

Izmaiņas un pārpratumi paturēti

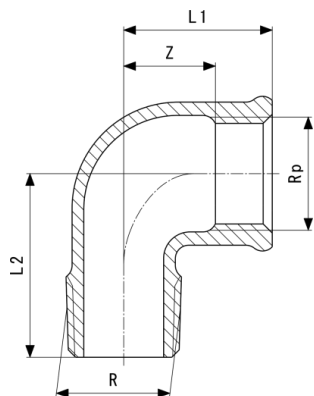
Aktuālos Z izmērus un iebūves izmērus kā arī tālākus tehniskus datus var atrast Viega mājaslapā. Un pirms pirkšanas, projektēšanas, montāžas un lietošanas jāpārbauda. mūsu produkti tiek nepārtraukti optimizēti

Šis produkta apraksts satur svarīgu informāciju par produktu, respektīvi sistēmas izvēli, montāžu, pieņemšanu ekspluatācijā, kā arī atbilstošu ekspluatāciju un ja nepieciešams arī par veicamajām apkopēm. Šīs informācijas par produktiem, kuru īpašības un pielietošanas tehnika bāzējās uz aktuālām spēkā esošām normām Eiropā (piem. EN) un vai Vācijā (piem. DIN/DVGW) Atsevišķas teksta daļas var norādīt uz tehniskiem priekšrakstiem Eiropā/Vācijā. Šim vajag priekš citām valstīm kalpot kā ieteikumam, ciktāl tur nav atbilstošu nacionālu prasību. Nacionālie likumi, standarti, priekšraksti, normas kā arī citi tehniski priekšraksti ir pārāki pār Vācu/Eiropas vadlīnijām šajā produktu aprakstā:šeit attainotā informācija nav saistoša priekš citam valstīm un apgabaliem un jāsaprot kā atbalsts.

Sertifikāti

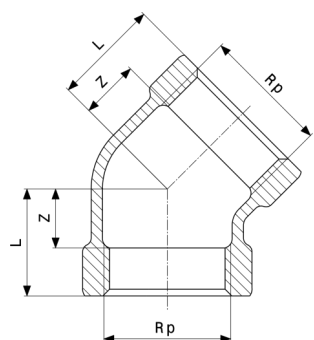
| | |
|---|--|
|  | <p>ÖVGW certificate bronze threaded fittings (3/8" - 3")</p> |
|  | <p>ÜA sign Profipress, solder fittings, threaded fittings</p> |
|  | <p>ÜA sign Sanpress, Raxofix, Maxiplus, bronze threaded fittings, solder fittings</p> |
|  | <p>SVGW certificate tap extensions (3/8" - 3")</p> |
|  | <p>SVGW certificate red brass threaded fittings (3/8" - 1")</p> |
|  | <p>DVGW type examination certificate Gunmetal threaded fittings</p> |
|  | <p>DVGW Baumusterprüfzertifikat tap extensions</p> |
| <p>VIK-HR</p> | <p>VIK-HR Inspection Certificate 3.2 Threaded fittings</p> |
| <p>EMI</p> | <p>EMI Certificate of Constancy of Performance Gunmetal threaded fittings</p> |
|  | <p>ICIM Hygiene certificate Profipress, Profipress XL, Sanpress Inox, Sanpress Inox XL, Sanpress, Sanpress XL, Sanfix Fosta, Raxofix, Smartpress, gunmetal threaded fittings, soldered fittings</p> |
| <p>EITS</p> | <p>EITS Technical Approval Brass and bronze threaded fittings</p> |

Z izmēri



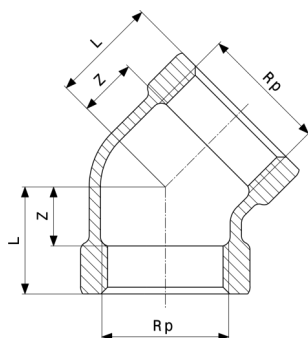
Līkums 90°
- bronza vai silīcija bronza
modelis 3092

| prece | R | Rp | Z | L1 | L2 |
|----------------|----|----|----|----|-----|
| 318 000 | ¼ | ¼ | 10 | 18 | 29 |
| 281 748 | ⅝ | ⅝ | 17 | 29 | 32 |
| 264 024 | ½ | ½ | 17 | 28 | 34 |
| 264 000 | ¾ | ¾ | 20 | 30 | 40 |
| 264 048 | 1 | 1 | 20 | 32 | 47 |
| 264 109 | 1¼ | 1¼ | 29 | 43 | 51 |
| 264 123 | 1½ | 1½ | 39 | 60 | 59 |
| 264 147 | 2 | 2 | 32 | 58 | 79 |
| 321 710 | 2½ | 2½ | 45 | 65 | 90 |
| 650 704 | 3 | 3 | 61 | 82 | 100 |



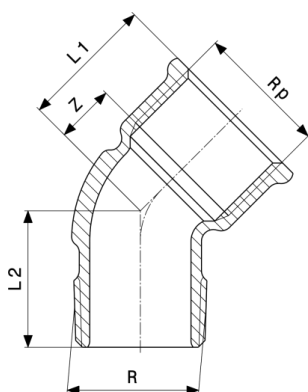
Līkums 45°
- bronza vai silīcija bronza
modelis 3120

| prece | Rp | Z | L |
|----------------|----|---|----|
| 318 048 | ⅝ | 8 | 19 |
| 320 690 | ½ | 7 | 22 |
| 320 645 | ¾ | 9 | 25 |



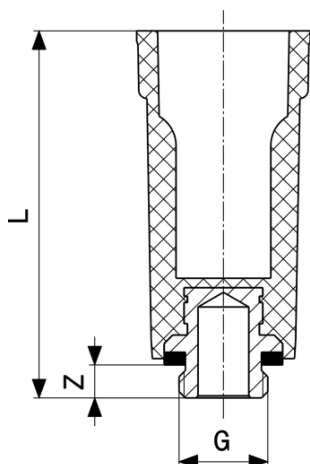
Līkums 45°
- bronza vai silīcija bronza
modelis 3120

| prece | Rp | Z | L |
|----------------|----|----|----|
| 320 652 | 1 | 9 | 28 |
| 650 728 | 2 | 14 | 40 |



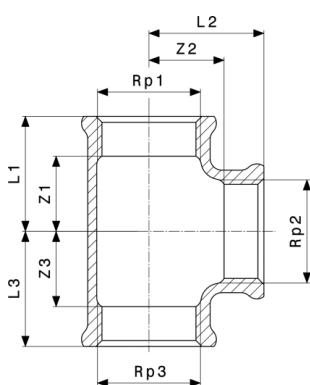
Līkums 45°
- bronza vai silīcija bronza
modelis 3121

| prece | R | Rp | Z | L1 | L2 |
|----------------|-------|-------|----|----|----|
| 281 755 | 3/8 | 3/8 | 10 | 22 | 23 |
| 264 208 | 1/2 | 1/2 | 8 | 23 | 31 |
| 264 185 | 3/4 | 3/4 | 13 | 30 | 31 |
| 264 161 | 1 | 1 | 15 | 34 | 35 |
| 448 271 | 1 1/4 | 1 1/4 | 24 | 45 | 40 |
| 448 288 | 1 1/2 | 1 1/2 | 26 | 47 | 45 |
| 650 711 | 2 | 2 | 26 | 52 | 56 |



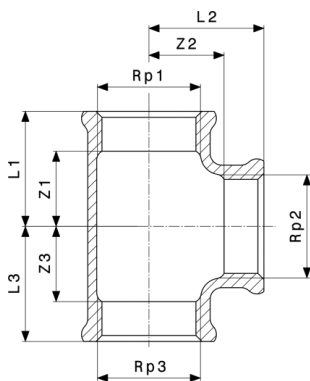
Nospiežams aizbāznis
- plastmasa
modelis 1516.113

| prece | G | Z | L |
|----------------|-----|----|----|
| 116 644 | 3/8 | 7 | 85 |
| 100 766 | 1/2 | 11 | 92 |
| 107 666 | 3/4 | 9 | 87 |



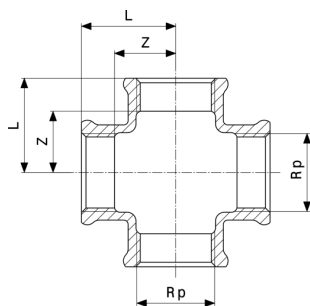
T-veidgabals
- bronza vai silīcija bronza
modelis 3130

| prece | Rp1 | Rp2 | Rp3 | Z1 | Z2 | Z3 | L1 | L2 | L3 |
|----------------|-----|-----|-----|----|----|----|----|----|----|
| 441 081 | 1/8 | 1/8 | 1/8 | 15 | 15 | 15 | 23 | 23 | 23 |
| 318 017 | 1/4 | 1/4 | 1/4 | 11 | 11 | 11 | 18 | 18 | 18 |
| 281 809 | 3/8 | 3/8 | 3/8 | 15 | 15 | 15 | 22 | 22 | 22 |
| 264 222 | 1/2 | 1/2 | 1/2 | 16 | 16 | 16 | 26 | 26 | 26 |
| 264 444 | 1/2 | 3/8 | 1/2 | 16 | 18 | 16 | 26 | 26 | 26 |
| 264 246 | 3/4 | 3/4 | 3/4 | 19 | 19 | 19 | 30 | 30 | 30 |
| 362 492 | 3/4 | 1/2 | 1/2 | 19 | 17 | 17 | 29 | 26 | 26 |
| 264 468 | 3/4 | 1/2 | 3/4 | 18 | 21 | 18 | 29 | 31 | 29 |
| 362 508 | 3/4 | 3/4 | 1/2 | 19 | 19 | 17 | 30 | 30 | 26 |
| 264 260 | 1 | 1 | 1 | 24 | 24 | 24 | 36 | 36 | 36 |



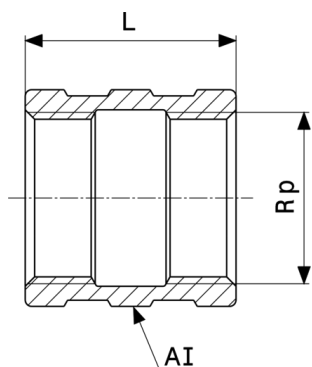
T-veidgabals
- bronza vai silīcija bronza
modelis 3130

| prece | Rp1 | Rp2 | Rp3 | Z1 | Z2 | Z3 | L1 | L2 | L3 |
|----------------|-----|-----|-----|----|----|----|----|----|----|
| 362 515 | 1 | ½ | 1 | 18 | 21 | 18 | 30 | 30 | 30 |
| 264 420 | 1 | ¾ | 1 | 17 | 20 | 17 | 36 | 36 | 36 |
| 362 522 | 1 | 1 | ½ | 25 | 25 | 22 | 37 | 37 | 32 |
| 264 284 | 1¼ | 1¼ | 1¼ | 32 | 32 | 32 | 45 | 45 | 45 |
| 650 735 | 1¼ | ½ | 1¼ | 21 | 27 | 21 | 34 | 36 | 34 |
| 650 742 | 1¼ | ¾ | 1¼ | 24 | 29 | 24 | 37 | 39 | 37 |
| 264 307 | 1½ | 1½ | 1½ | 33 | 33 | 33 | 54 | 54 | 54 |
| 650 759 | 1½ | ½ | 1½ | 21 | 31 | 21 | 34 | 40 | 34 |
| 650 766 | 1½ | ¾ | 1½ | 24 | 32 | 24 | 37 | 42 | 37 |
| 264 321 | 2 | 2 | 2 | 35 | 35 | 35 | 61 | 61 | 61 |
| 650 773 | 2 | 1 | 2 | 27 | 39 | 27 | 45 | 51 | 45 |
| 321 734 | 2½ | 2½ | 2½ | 38 | 38 | 38 | 69 | 69 | 69 |
| 321 727 | 3 | 3 | 3 | 62 | 62 | 62 | 85 | 85 | 85 |



Krustveida elements
- bronza vai silīcija bronza
modelis 3180

| prece | Rp | Z | L |
|----------------|----|----|----|
| 318 024 | ¾ | 10 | 21 |
| 320 614 | ½ | 12 | 27 |
| 320 621 | ¾ | 16 | 32 |
| 320 638 | 1 | 19 | 38 |



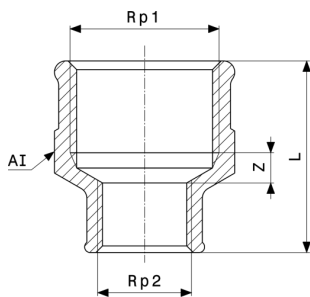
Uzmava
- bronza vai silīcija bronza
modelis 3270

| prece | Rp | VCR | L | AI |
|-----------------|-------|-----|----|-----|
| 441 395 | 1/8 | | 16 | 14 |
| 319 137 | 1/4 | | 18 | 17 |
| 282 349 | 3/8 | | 23 | 21 |
| 266 585 | 1/2 | | 30 | 26 |
| 266 554 | 3/4 | | 33 | 32 |
| 266 561 | 1 | | 38 | 38 |
| 266 578 | 1 1/4 | | 43 | 50 |
| 267 766 | 1 1/2 | | 43 | 57 |
| 267 780 | 2 | | 59 | 70 |
| 271 916 | 2 1/2 | | 61 | 83 |
| 271 930 | 3 | | 67 | 103 |
| 447 755 | 3/8 | ✓ | 23 | 21 |
| 447 762 | 1/2 | ✓ | 30 | 26 |
| 447 779 | 3/4 | ✓ | 33 | 32 |
| 447 786* | 1 | ✓ | 38 | 38 |

VCR = hromēts

AI = Atslēgas izmērs

* = piegāde tikai no noliktavas krājumiem



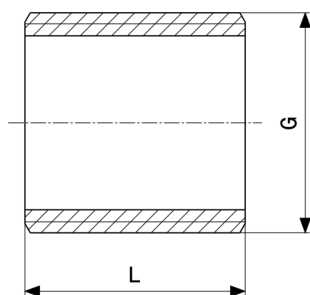
Pārejas uzmava
- bronza vai silīcija bronza
modelis 3240

| prece | Rp1 | Rp2 | VCR | Z | L | AI |
|-----------------|-------|-------|-----|----|----|----|
| 282 103 | 3/8 | 1/4 | | 3 | 26 | 21 |
| 318 031 | 1/2 | 1/4 | | 5 | 31 | 26 |
| 268 879 | 1/2 | 3/8 | | 5 | 31 | 26 |
| 266 370 | 3/4 | 3/8 | | 5 | 34 | 31 |
| 268 862 | 3/4 | 1/2 | | 5 | 32 | 31 |
| 266 363 | 1 | 1/2 | | 13 | 34 | 26 |
| 266 356 | 1 | 3/4 | | 7 | 36 | 38 |
| 266 431 | 1 1/4 | 3/4 | | 8 | 45 | 47 |
| 266 417 | 1 1/4 | 1 | | 6 | 49 | 47 |
| 271 879 | 1 1/2 | 3/4 | | 10 | 41 | 53 |
| 267 520 | 1 1/2 | 1 | | 8 | 48 | 53 |
| 266 394 | 1 1/2 | 1 1/4 | | 5 | 47 | 53 |
| 271 893 | 2 | 1 1/4 | | 2 | 50 | 66 |
| 267 544 | 2 | 1 1/2 | | 0 | 47 | 66 |
| 271 855 | 2 1/2 | 2 | | 16 | 58 | 83 |
| 650 780 | 3 | 2 1/2 | | 27 | 67 | |
| 447 809* | 3/8 | 1/4 | ✓ | | | |
| 447 816 | 1/2 | 3/8 | ✓ | 4 | 31 | 26 |
| 447 823 | 3/4 | 1/2 | ✓ | 5 | 32 | 31 |
| 447 830* | 1 | 1/2 | ✓ | 13 | 34 | 26 |
| 447 847* | 1 | 3/4 | ✓ | 7 | 36 | 38 |

VCR = hromēts

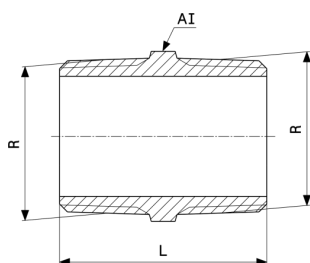
AI = Atslēgas izmērs

* = piegāde tikai no noliktavas krājumiem



Nipelis
- bronza vai silīcija bronza
modelis 3531

| prece | G | L |
|----------------|----|----|
| 322 076 | ¼ | 20 |
| 322 113 | ⅜ | 20 |
| 322 106 | ½ | 22 |
| 322 090 | ¾ | 26 |
| 322 083 | 1 | 33 |
| 322 144 | 1¼ | 37 |
| 322 137 | 1½ | 42 |
| 322 120 | 2 | 47 |



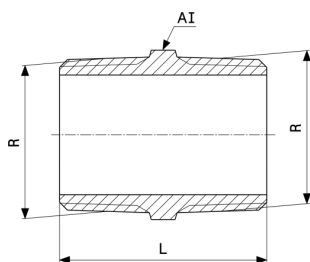
Dubultnipelis
- bronza vai silīcija bronza
modelis 3280

| prece | R | VCR | L | AI |
|----------------|----|-----|----|----|
| 441 401 | ⅛ | | 18 | 10 |
| 320 416 | ¼ | | 20 | 14 |
| 282 356 | ⅜ | | 29 | 18 |
| 266 592 | ½ | | 37 | 22 |
| 266 615 | ¾ | | 40 | 27 |
| 266 608 | 1 | | 45 | 34 |
| 269 135 | 1¼ | | 53 | 44 |
| 269 111 | 1½ | | 52 | 50 |
| 269 098 | 2 | | 65 | 65 |
| 321 741 | 2½ | | 78 | 80 |

VCR = hromēts

AI = Atslēgas izmērs

* = piegāde tikai no noliktavas krājumiem



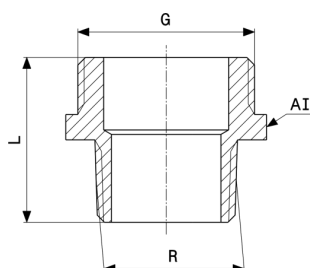
Dubultnipelis
- bronza vai silīcija bronza
modelis 3280

| prece | R | VCR | L | AI |
|-----------------|---|-----|----|----|
| 321 789 | 3 | | 85 | 95 |
| 447 885 | ¼ | ✓ | 20 | 14 |
| 447 892 | ⅜ | ✓ | 29 | 18 |
| 447 908 | ½ | ✓ | 37 | 22 |
| 447 915 | ¾ | ✓ | 40 | 27 |
| 447 922* | 1 | ✓ | 45 | 34 |

VCR = hromēts

AI = Atslēgas izmērs

* = piegāde tikai no noliktavas krājumiem



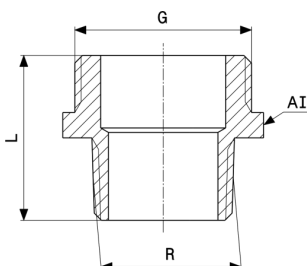
Pārejas nipelis
- bronza vai silīcija bronza
modelis 3247

| prece | R | G | VCR | L | AI |
|----------------|---|----|-----|----|----|
| 458 775 | ⅛ | ¼ | | 20 | 14 |
| 458 782 | ¼ | ⅜ | | 24 | 18 |
| 458 799 | ¼ | ½ | | 25 | 22 |
| 458 805 | ⅜ | ½ | | 24 | 27 |
| 458 812 | ⅜ | ¾ | | 28 | 27 |
| 446 833 | ½ | ¾ | | 31 | 27 |
| 458 829 | ½ | 1 | | 30 | 34 |
| 446 840 | ¾ | 1 | | 35 | 34 |
| 458 836 | ¾ | 1¼ | | 37 | 44 |
| 446 857 | 1 | 1¼ | | 36 | 44 |
| 458 843 | 1 | 1½ | | 43 | 50 |

VCR = hromēts

AI = Atslēgas izmērs

* = piegāde tikai no noliktavas krājumiem



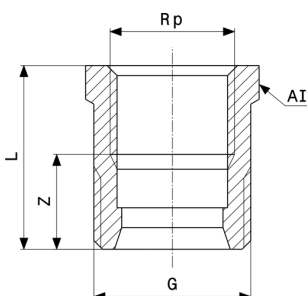
Pārejas nipelis
- bronza vai silīcija bronza
modelis 3247

| prece | R | G | VCR | L | AI |
|-----------------|----|----|-----|----|----|
| 446 864 | 1¼ | 1½ | | 45 | 50 |
| 458 850 | 1½ | 2 | | 48 | 68 |
| 458 867* | ¼ | ¾ | ✓ | | |
| 458 874 | ¾ | ½ | ✓ | 24 | 18 |
| 458 881 | ¾ | ¾ | ✓ | 28 | 27 |
| 448 189 | ½ | ¾ | ✓ | 31 | 27 |
| 448 196 | ¾ | 1 | ✓ | 35 | 34 |

VCR = hromēts

AI = Atslēgas izmērs

* = piegāde tikai no noliktavas krājumiem



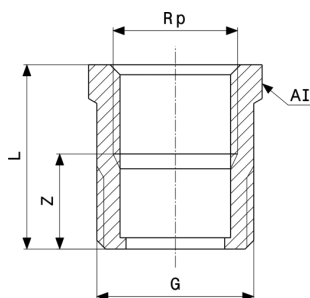
Pārejas nipelis
- bronza vai silīcija bronza
modelis 3243

| prece | G | Rp | alk | Z | L | AI |
|-----------------|----|----|-----|----|----|----|
| 441 487 | ¾ | ¼ | ✓ | 11 | 22 | 18 |
| 446 666 | ½ | ¾ | ✓ | 12 | 23 | 22 |
| 441 494 | ¾ | ½ | ✓ | 16 | 31 | 27 |
| 446 673 | 1 | ¾ | ✓ | 16 | 33 | 34 |
| 449 315* | 1 | 1 | ✓ | 21 | 41 | 40 |
| 446 680 | 1¼ | 1 | ✓ | 15 | 34 | 43 |
| 446 697* | 1½ | 1¼ | ✓ | 18 | 39 | 50 |

alk = ar iekšējo konusu

AI = Atslēgas izmērs

* = piegāde tikai no noliktavas krājumiem

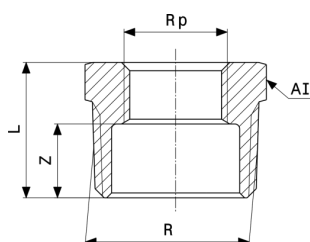


Pārejas nipelis
- bronza vai silīcija bronza
modelis 3244

| prece | G | Rp | VCR | Z | L | AI |
|----------------|----|----|-----|----|----|----|
| 446 734 | ¾ | ½ | | 14 | 29 | 27 |
| 446 741 | 1 | ¾ | | 16 | 33 | 34 |
| 446 758 | 1¼ | 1 | | 15 | 34 | 43 |
| 448 264 | ¾ | ½ | ✓ | 14 | 29 | 27 |

VCR = hromēts

AI = Atslēgas izmērs



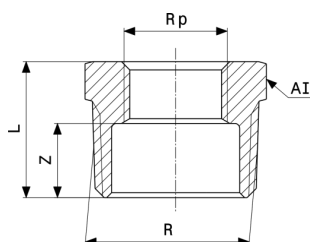
Pāreja
- bronza vai silīcija bronza
modelis 3241

| prece | R | Rp | VCR | Z | L | AI |
|----------------|----|----|-----|----|----|----|
| 441 104 | ¼ | ⅛ | | 9 | 17 | 14 |
| 441 111 | ⅜ | ⅛ | | 10 | 17 | 18 |
| 281 823 | ⅜ | ¼ | | 6 | 17 | 18 |
| 441 098 | ½ | ⅛ | | 14 | 21 | 22 |
| 319 076 | ½ | ¼ | | 11 | 22 | 22 |
| 266 516 | ½ | ⅜ | | 10 | 22 | 22 |
| 320 409 | ¾ | ¼ | | 12 | 23 | 27 |
| 266 509 | ¾ | ⅜ | | 12 | 23 | 27 |
| 266 493 | ¾ | ½ | | 8 | 23 | 27 |
| 266 455 | 1 | ⅜ | | 16 | 27 | 34 |
| 266 486 | 1 | ½ | | 13 | 28 | 34 |
| 266 479 | 1 | ¾ | | 11 | 28 | 34 |
| 267 582 | 1¼ | ½ | | 16 | 31 | 43 |

VCR = hromēts

AI = Atslēgas izmērs

* = piegāde tikai no noliktavas krājumiem



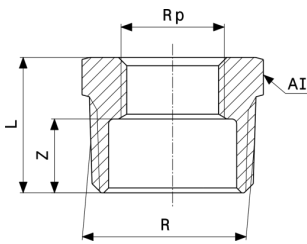
Pāreja
- bronza vai silīcija bronza
modelis 3241

| prece | R | Rp | VCR | Z | L | AI |
|-----------------|----|----|-----|----|----|----|
| 267 568 | 1¼ | ¾ | | 15 | 31 | 44 |
| 266 462 | 1¼ | 1 | | 12 | 31 | 44 |
| 267 742 | 1½ | ½ | | 17 | 32 | 50 |
| 267 728 | 1½ | ¾ | | 15 | 31 | 50 |
| 267 605 | 1½ | 1 | | 12 | 31 | 50 |
| 267 704 | 1½ | 1¼ | | 10 | 31 | 50 |
| 317 089 | 2 | ½ | | 21 | 36 | 62 |
| 267 681 | 2 | ¾ | | 20 | 36 | 62 |
| 267 667 | 2 | 1 | | 18 | 37 | 61 |
| 267 643 | 2 | 1¼ | | 15 | 37 | 61 |
| 267 629 | 2 | 1½ | | 15 | 37 | 61 |
| 321 772 | 2½ | 1 | | 26 | 45 | 80 |
| 321 765 | 2½ | 1¼ | | 20 | 41 | 78 |
| 321 864 | 2½ | 1½ | | 20 | 41 | 78 |
| 322 533 | 2½ | 2 | | 16 | 41 | 78 |
| 321 840 | 3 | 1½ | | 31 | 52 | 60 |
| 321 857 | 3 | 2 | | 28 | 54 | 72 |
| 321 871 | 3 | 2½ | | 20 | 50 | 95 |
| 321 888 | 4 | 3 | | 23 | 56 | 13 |
| 447 946* | ¼ | ⅛ | ✓ | 10 | 17 | 14 |
| 447 953* | ⅜ | ⅛ | ✓ | 10 | 17 | 18 |
| 447 960 | ⅜ | ¼ | ✓ | 10 | 17 | 18 |
| 447 977* | ½ | ⅛ | ✓ | 13 | 22 | 22 |
| 447 984 | ½ | ¼ | ✓ | 13 | 22 | 22 |
| 447 991 | ½ | ⅜ | ✓ | 13 | 22 | 22 |
| 448 011 | ¾ | ⅜ | ✓ | 15 | 23 | 27 |
| 448 028 | ¾ | ½ | ✓ | 15 | 23 | 27 |
| 448 042* | 1 | ½ | ✓ | 17 | 28 | 34 |

VCR = hromēts

AI = Atslēgas izmērs

* = piegāde tikai no noliktavas krājumiem



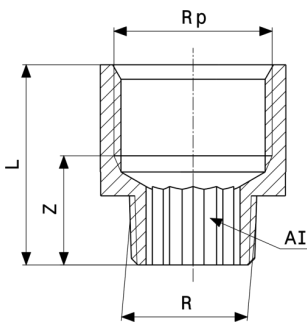
Pāreja
- bronza vai silīcija bronza
modelis 3241

| prece | R | Rp | VCR | Z | L | AI |
|-----------------|----|----|-----|----|----|----|
| 448 059 | 1 | ¾ | ✓ | 17 | 28 | 34 |
| 448 073* | 1¼ | 1 | ✓ | 19 | 31 | 44 |

VCR = hromēts

AI = Atslēgas izmērs

* = piegāde tikai no noliktavas krājumiem



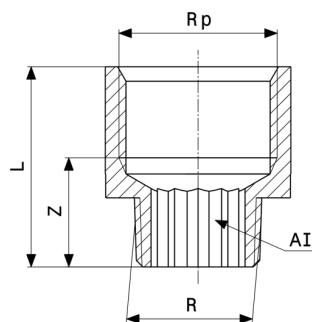
Pāreja
- bronza vai silīcija bronza
modelis 3242

| prece | R | Rp | VCR | Z | L | AI |
|-----------------|---|----|-----|----|----|----|
| 441 128 | ⅛ | ¼ | | 14 | 25 | 6 |
| 441 135 | ⅛ | ⅜ | | 15 | 26 | 6 |
| 322 540 | ¼ | ⅝ | | 15 | 27 | |
| 322 564 | ⅜ | ½ | | 17 | 32 | 10 |
| 322 557 | ⅜ | ¾ | | 19 | 35 | 10 |
| 319 083 | ½ | ⅝ | | 17 | 28 | 10 |
| 320 423 | ½ | ¾ | | 21 | 37 | 12 |
| 320 430 | ½ | 1 | | 19 | 39 | |
| 650 889 | ½ | 1¼ | | 31 | 52 | |
| 441 142 | ¾ | ½ | | 25 | 40 | |
| 335 311 | ¾ | 1 | | 23 | 42 | |
| 441 357 | ¾ | 1¼ | | 31 | 52 | |
| 650 841* | ¾ | 1½ | | 32 | 53 | |
| 359 348 | 1 | 1¼ | | 27 | 48 | |

VCR = hromēts

AI = Atslēgas izmērs

* = piegāde tikai no noliktavas krājumiem



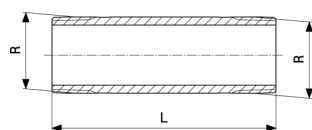
Pāreja
- bronza vai silīcija bronza
modelis 3242

| prece | R | Rp | VCR | Z | L | AI |
|----------|----|----|-----|----|----|----|
| 650 858 | 1 | 1½ | | 33 | 54 | |
| 650 872 | 1 | 2 | | 34 | 60 | |
| 650 865 | 1¼ | 1½ | | 33 | 54 | |
| 448 097* | ⅛ | ¼ | ✓ | 14 | 25 | 6 |
| 448 103* | ⅛ | ⅜ | ✓ | 15 | 26 | 6 |
| 448 110* | ¼ | ⅝ | ✓ | 15 | 27 | |
| 448 127 | ⅜ | ½ | ✓ | 17 | 32 | 10 |
| 448 134* | ⅜ | ¾ | ✓ | 19 | 35 | 10 |
| 448 141 | ½ | ⅝ | ✓ | 17 | 28 | 10 |
| 448 158 | ½ | ¾ | ✓ | 21 | 37 | 12 |
| 448 165* | ¾ | 1 | ✓ | 25 | 40 | |
| 448 172 | ¾ | 1 | ✓ | 23 | 42 | |

VCR = hromēts

AI = Atslēgas izmērs

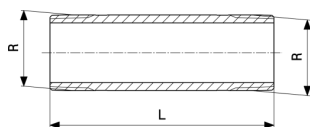
* = piegāde tikai no noliktavas krājumiem



Pagarinātais nipelis
- bronza vai silīcija bronza
modelis 3530

| prece | R | L |
|---------|---|-----|
| 441 456 | ¼ | 40 |
| 441 463 | ¼ | 60 |
| 441 470 | ¼ | 80 |
| 441 555 | ¼ | 100 |
| 282 400 | ⅜ | 40 |
| 282 417 | ⅜ | 60 |
| 282 424 | ⅜ | 80 |

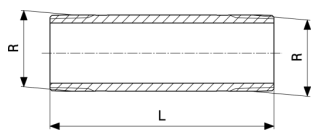
* = piegāde tikai no noliktavas krājumiem



Pagarinātais nipelis
- bronza vai silīcija bronza
modelis 3530

| prece | R | L |
|----------|-----|-----|
| 282 431 | 3/8 | 100 |
| 282 448 | 3/8 | 120 |
| 282 455* | 3/8 | 150 |
| 282 462* | 3/8 | 200 |
| 267 308 | 1/2 | 40 |
| 650 896 | 1/2 | 50 |
| 267 315 | 1/2 | 60 |
| 449 216 | 1/2 | 70 |
| 267 322 | 1/2 | 80 |
| 650 919 | 1/2 | 90 |
| 267 339 | 1/2 | 100 |
| 650 926 | 1/2 | 110 |
| 267 346 | 1/2 | 120 |
| 319 700 | 1/2 | 140 |
| 267 353 | 1/2 | 150 |
| 319 717 | 1/2 | 160 |
| 319 724 | 1/2 | 180 |
| 267 377 | 1/2 | 200 |
| 267 384 | 3/4 | 40 |
| 650 933 | 3/4 | 50 |
| 267 391 | 3/4 | 60 |
| 650 940 | 3/4 | 70 |
| 267 407 | 3/4 | 80 |
| 650 957 | 3/4 | 90 |
| 267 414 | 3/4 | 100 |
| 650 964 | 3/4 | 110 |
| 267 421 | 3/4 | 120 |
| 318 413 | 3/4 | 140 |
| 267 438 | 3/4 | 150 |
| 318 420 | 3/4 | 160 |
| 318 437 | 3/4 | 180 |

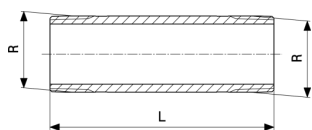
* = piegāde tikai no noliktavas krājumiem



Pagarinātais nipelis
- bronza vai silīcija bronza
modelis 3530

| prece | R | L |
|----------|----|-----|
| 267 445 | ¾ | 200 |
| 267 247 | 1 | 40 |
| 650 971 | 1 | 50 |
| 267 254 | 1 | 60 |
| 650 988 | 1 | 70 |
| 267 261 | 1 | 80 |
| 650 995 | 1 | 90 |
| 267 278 | 1 | 100 |
| 651 008 | 1 | 110 |
| 267 285 | 1 | 120 |
| 267 292 | 1 | 150 |
| 319 694 | 1 | 200 |
| 651 015 | 1¼ | 50 |
| 318 482 | 1¼ | 60 |
| 651 022* | 1¼ | 70 |
| 318 499 | 1¼ | 80 |
| 651 039* | 1¼ | 90 |
| 318 505 | 1¼ | 100 |
| 651 046* | 1¼ | 110 |
| 318 512 | 1¼ | 120 |
| 318 529 | 1¼ | 150 |
| 318 536 | 1¼ | 200 |
| 651 053 | 1½ | 50 |
| 319 755 | 1½ | 60 |
| 651 060* | 1½ | 70 |
| 319 762 | 1½ | 80 |
| 651 077* | 1½ | 90 |
| 319 779 | 1½ | 100 |
| 319 786 | 1½ | 120 |
| 319 748 | 1½ | 150 |
| 319 731 | 1½ | 200 |

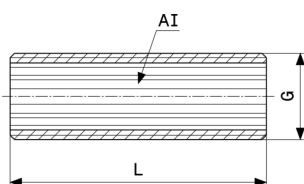
* = piegāde tikai no noliktavas krājumiem



Pagarinātais nipelis
- bronza vai silīcija bronza
modelis 3530

| prece | R | L |
|----------------------|-----|-----|
| 651 084 | 2 | 50 |
| 319 847 | 2 | 60 |
| 651 091 [*] | 2 | 70 |
| 319 830 | 2 | 80 |
| 651 107 [*] | 2 | 90 |
| 319 823 | 2 | 100 |
| 319 816 | 2 | 120 |
| 319 809 | 2 | 150 |
| 319 793 | 2 | 200 |
| 447 465 [*] | 3/8 | 40 |
| 447 472 [*] | 3/8 | 60 |
| 447 489 [*] | 3/8 | 80 |
| 447 496 [*] | 3/8 | 100 |
| 447 526 | 1/2 | 40 |
| 447 533 | 1/2 | 60 |
| 447 540 | 1/2 | 80 |
| 447 557 | 1/2 | 100 |
| 447 564 [*] | 1/2 | 120 |
| 447 571 [*] | 1/2 | 150 |
| 447 588 [*] | 1/2 | 200 |
| 447 595 | 3/4 | 40 |
| 447 601 | 3/4 | 60 |
| 447 618 | 3/4 | 80 |
| 447 625 | 3/4 | 100 |
| 447 632 [*] | 3/4 | 120 |
| 447 649 [*] | 3/4 | 150 |
| 447 656 [*] | 3/4 | 200 |
| 447 663 [*] | 1 | 40 |
| 447 687 [*] | 1 | 80 |
| 447 694 [*] | 1 | 100 |
| 447 700 [*] | 1 | 120 |

* = piegāde tikai no noliktavas krājumiem

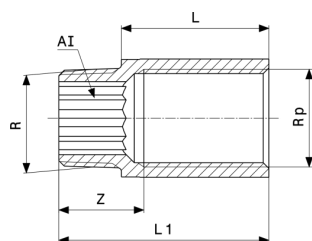


Pagarinātais nipelis
 - bronza vai silīcija bronza
modelis 3535

| prece | G | L | AI |
|-----------------|---|-----|----|
| 319 670 | ¾ | 40 | 10 |
| 319 267 | ¾ | 60 | 10 |
| 319 335 | ¾ | 80 | 10 |
| 319 281 | ¾ | 100 | 10 |
| 319 687* | ¾ | 120 | 10 |
| 319 274 | ½ | 40 | 12 |
| 319 366 | ½ | 60 | 12 |
| 319 359 | ½ | 80 | 12 |
| 319 342 | ½ | 100 | 12 |
| 319 656* | ½ | 120 | 12 |
| 319 328 | ¾ | 40 | 17 |
| 319 298 | ¾ | 60 | 17 |
| 319 304 | ¾ | 80 | 17 |
| 319 311 | ¾ | 100 | 17 |
| 319 663* | ¾ | 120 | 17 |
| 319 250 | 1 | 40 | 22 |
| 319 243 | 1 | 60 | 22 |
| 319 236 | 1 | 80 | 22 |
| 319 229 | 1 | 100 | 22 |
| 319 649* | 1 | 120 | 22 |

AI = Atslēgas izmērs

* = piegāde tikai no noliktavas krājumiem



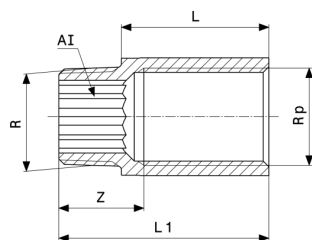
Pagarinājums
- bronza vai silīcija bronza
modelis 3525

| prece | R | Rp | L | Rpk | Z | L1 | AI |
|----------------------|-----|-----|------|-----|-----|-----|----|
| 440 312 ¹ | 3/8 | 3/8 | 10 | | 16 | 22 | 10 |
| 354 923 | 3/8 | 3/8 | 15 | | 16 | 27 | 10 |
| 354 930 | 3/8 | 3/8 | 20 | | 18 | 32 | 10 |
| 354 947 | 3/8 | 3/8 | 25 | | 18 | 37 | 10 |
| 354 954 | 3/8 | 3/8 | 30 | | 18 | 42 | 10 |
| 359 539 | 3/8 | 3/8 | 40 | | 17 | 52 | 10 |
| 359 553 | 3/8 | 3/8 | 50 | ✓ | 17 | 62 | 10 |
| 364 854 ¹ | 1/2 | 1/2 | 12,5 | | 19 | 28 | 12 |
| 651 121 ¹ | 1/2 | 1/2 | 15 | | 19 | 31 | 12 |
| 354 961 | 1/2 | 1/2 | 17,5 | | 18 | 33 | 12 |
| 354 978 | 1/2 | 1/2 | 20 | | 21 | 36 | 12 |
| 354 985 | 1/2 | 1/2 | 25 | | 22 | 41 | 12 |
| 354 992 | 1/2 | 1/2 | 30 | | 22 | 46 | 12 |
| 355 005 | 1/2 | 1/2 | 40 | | 22 | 56 | 12 |
| 355 012 | 1/2 | 1/2 | 50 | ✓ | 21 | 66 | 12 |
| 357 221 | 1/2 | 1/2 | 65 | ✓ | 21 | 81 | 12 |
| 357 238 | 1/2 | 1/2 | 80 | ✓ | 29 | 96 | 12 |
| 357 245 | 1/2 | 1/2 | 100 | ✓ | 61 | 116 | 12 |
| 440 299 | 1/2 | 1/2 | 120 | | 71 | 136 | 12 |
| 440 305 | 1/2 | 1/2 | 150 | | 101 | 166 | 12 |
| 440 558 ¹ | 3/4 | 3/4 | 12,5 | | 21 | 30 | 17 |
| 364 861 ¹ | 3/4 | 3/4 | 15 | | 20 | 32 | 17 |
| 355 029 | 3/4 | 3/4 | 20 | | 21 | 37 | 17 |
| 355 036 | 3/4 | 3/4 | 25 | | 26 | 42 | 17 |
| 355 043 | 3/4 | 3/4 | 30 | | 23 | 47 | 17 |
| 355 050 | 3/4 | 3/4 | 40 | | 23 | 57 | 17 |
| 357 252 | 3/4 | 3/4 | 50 | ✓ | 22 | 67 | 17 |
| 357 269 | 3/4 | 3/4 | 65 | ✓ | 22 | 82 | 17 |

Rpk = Rp vītne saīsināma

AI = Atslēgas izmērs

¹⁾ bez DVGW kontroles zīmes



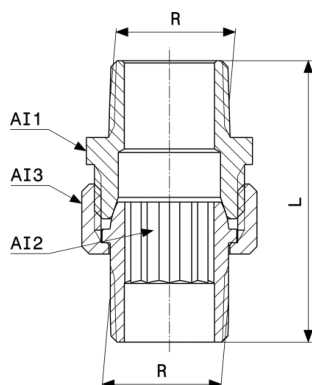
Pagarinājums
- bronza vai silīcija bronza
modelis 3525

| prece | R | Rp | L | Rpk | Z | L1 | AI |
|----------------------------|----|----|-----|-----|----|-----|----|
| 359 584 | ¾ | ¾ | 80 | ✓ | 37 | 97 | 17 |
| 359 577 | ¾ | ¾ | 100 | ✓ | 62 | 117 | 17 |
| 440 572¹ | 1 | 1 | 15 | | 25 | 35 | 22 |
| 440 589¹ | 1 | 1 | 20 | | 25 | 40 | 22 |
| 357 184 | 1 | 1 | 25 | | 25 | 45 | 22 |
| 357 191 | 1 | 1 | 30 | | 30 | 50 | 22 |
| 357 207 | 1 | 1 | 40 | | 23 | 60 | 22 |
| 357 214 | 1 | 1 | 50 | | 25 | 70 | 22 |
| 440 596 | 1 | 1 | 65 | | 25 | 85 | 22 |
| 440 466 | 1 | 1 | 80 | | 40 | 100 | 22 |
| 440 473 | 1 | 1 | 100 | | 55 | 120 | 22 |
| 440 497¹ | 1¼ | 1¼ | 20 | | 27 | 42 | 27 |
| 440 503 | 1¼ | 1¼ | 25 | | 27 | 47 | 27 |
| 440 510 | 1¼ | 1¼ | 30 | | 27 | 52 | 27 |
| 440 527 | 1¼ | 1¼ | 40 | | 41 | 62 | 27 |
| 440 534 | 1¼ | 1¼ | 50 | | 51 | 72 | 27 |

Rpk = Rp vītne saīsināma

AI = Atslēgas izmērs

¹⁾ bez DVGW kontroles zīmes

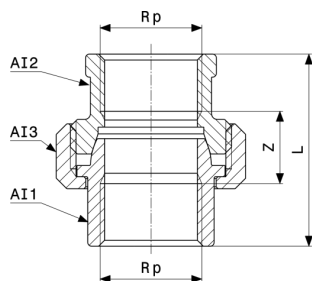


Skrūšsavienojums
- bronza vai silīcija bronza
modelis 3344

| prece | R | L | AI1 | AI2 | AI3 |
|-----------------|-----|----|-----|-----|-----|
| 446 871* | 3/8 | 46 | 22 | 23 | 8 |
| 446 888 | 1/2 | 55 | 27 | 29 | 12 |
| 446 895 | 3/4 | 62 | 34 | 36 | 17 |
| 446 901 | 1 | 69 | 44 | 46 | 22 |

AI = Atslēgas izmērs

* = piegāde tikai no noliktavas krājumiem

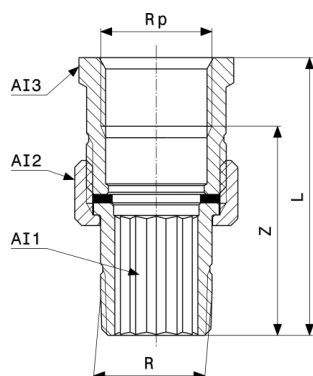


Skrūšsavienojums
- bronza vai silīcija bronza
modelis 3340

| prece | Rp | Z | L | AI1 | AI2 | AI3 |
|-----------------|-------|----|----|-----|-----|-----|
| 449 414* | 1/4 | 16 | 38 | | | 23 |
| 446 925* | 3/8 | 17 | 40 | | | 29 |
| 446 932 | 1/2 | 17 | 47 | | | 36 |
| 446 949 | 3/4 | 17 | 50 | | | 46 |
| 446 956 | 1 | 21 | 60 | 37 | 37 | 52 |
| 446 963 | 1 1/4 | 22 | 65 | 47 | 47 | 65 |
| 446 970 | 1 1/2 | 25 | 68 | 55 | 55 | 75 |
| 446 987 | 2 | 23 | 74 | 66 | 68 | 80 |

AI = Atslēgas izmērs

* = piegāde tikai no noliktavas krājumiem

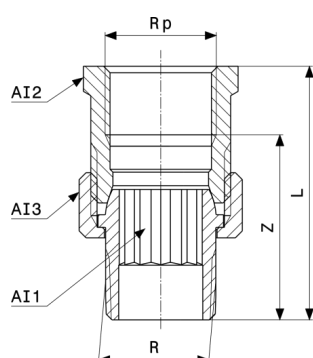


Skrūšsavienojums
- bronza vai silīcija bronza
modelis 3331

| prece | R | Rp | Z | L | AI1 | AI2 | AI3 |
|-----------------|----|----|----|-----|-----|-----|-----|
| 282 370 | ⅜ | ⅜ | 38 | 50 | 13 | 23 | 22 |
| 271 374 | ½ | ½ | 45 | 60 | 12 | 29 | 27 |
| 271 367 | ¾ | ¾ | 50 | 66 | 17 | 36 | 34 |
| 271 350 | 1 | 1 | 52 | 72 | 22 | 46 | 44 |
| 271 343 | 1¼ | 1¼ | 60 | 81 | 38 | 52 | 50 |
| 271 336 | 1½ | 1½ | 62 | 84 | 43 | 59 | 56 |
| 271 329 | 2 | 2 | 58 | 84 | 58 | 75 | 67 |
| 651 152 | 2½ | 2½ | 66 | 88 | 83 | 95 | 71 |
| 651 169* | 3 | 3 | 80 | 101 | 83 | 110 | 97 |

AI = Atslēgas izmērs

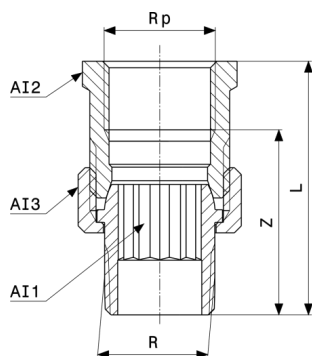
* = piegāde tikai no noliktavas krājumiem



Skrūšsavienojums
- bronza vai silīcija bronza
modelis 3341

| prece | R | Rp | Z | L | AI1 | AI2 | AI3 |
|----------------|----|----|----|----|-----|-----|-----|
| 446 994 | ⅜ | ⅜ | 33 | 45 | 8 | 22 | 23 |
| 447 007 | ½ | ½ | 41 | 56 | 12 | 27 | 29 |
| 447 014 | ¾ | ¾ | 44 | 60 | 17 | 34 | 36 |
| 447 021 | 1 | 1 | 45 | 64 | 22 | 44 | 46 |
| 447 038 | 1¼ | 1¼ | 51 | 72 | | 50 | 52 |

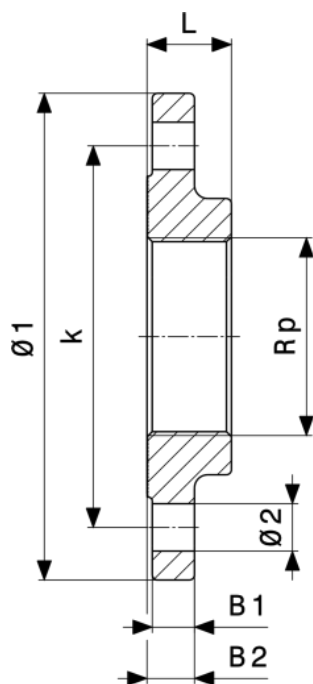
AI = Atslēgas izmērs



Skrūšsavienojums
- bronza vai silīcija bronza
modelis 3341

| prece | R | Rp | Z | L | AI1 | AI2 | AI3 |
|----------------|----|----|----|----|-----|-----|-----|
| 447 045 | 1½ | 1½ | 52 | 73 | | 55 | 59 |
| 447 052 | 2 | 2 | 53 | 78 | | 70 | 75 |

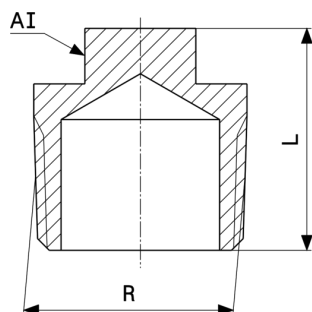
AI = Atslēgas izmērs



Sanpress XL-atloks
- bronza vai silīcija bronza
modelis 2259.2XL

| prece | DN | Rp | Ø1 | L | B1 | B2 | Ø2 | k | n |
|----------------|-----|----|-----|----|----|----|----|-----|---|
| 641 597 | 65 | 2½ | 185 | 32 | 16 | 18 | 18 | 145 | 8 |
| 641 603 | 80 | 3 | 200 | 34 | 18 | 20 | 18 | 160 | 8 |
| 641 610 | 100 | 4 | 220 | 38 | 18 | 20 | 18 | 180 | 8 |

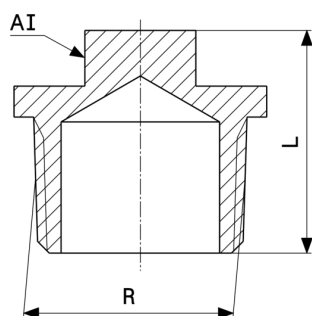
k = Atveru centru perimetra Ø
n = Urbumu skaits



Aizbāznis
- bronza vai silīcija bronza
modelis 3291

| prece | R | L | AI |
|----------------|----|----|----|
| 320 072 | ¼ | 19 | 8 |
| 281 847 | ⅜ | 20 | 10 |
| 266 646 | ½ | 26 | 12 |
| 266 639 | ¾ | 28 | 14 |
| 266 622 | 1 | 32 | 14 |
| 268 237 | 1¼ | 38 | 21 |
| 268 190 | 1½ | 38 | 22 |
| 268 213 | 2 | 42 | 26 |
| 321 758 | 2½ | 47 | 30 |

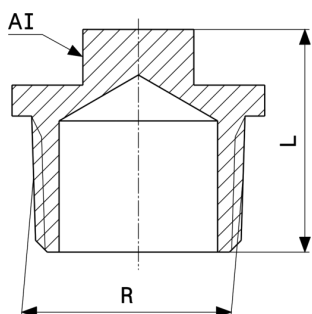
AI = Atslēgas izmērs



Aizbāznis
- bronza vai silīcija bronza
modelis 3290

| prece | R | L | AI |
|----------------|----|----|----|
| 441 425 | ⅛ | 17 | 8 |
| 320 133 | ¼ | 20 | 8 |
| 320 096 | ⅜ | 20 | 10 |
| 320 102 | ½ | 24 | 12 |
| 320 089 | ¾ | 26 | 14 |
| 320 294 | 1 | 32 | 14 |
| 322 175 | 1¼ | 38 | 21 |
| 322 168 | 1½ | 38 | 32 |

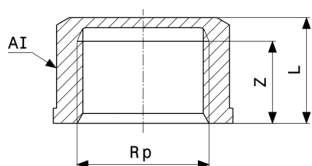
AI = Atslēgas izmērs



Aizbāznis
- bronza vai silīcija bronza
modelis 3290

| prece | R | L | AI |
|----------------|---|----|----|
| 322 151 | 2 | 42 | 26 |

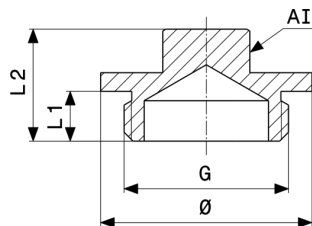
AI = Atslēgas izmērs



Vāciņš
- bronza vai silīcija bronza
modelis 3301

| prece | Rp | Z | L | AI |
|----------------|----|----|----|----|
| 319 151 | ¼ | 8 | 12 | 20 |
| 281 854 | ⅜ | 11 | 16 | 22 |
| 266 660 | ½ | 15 | 20 | 24 |
| 266 653 | ¾ | 16 | 21 | 30 |
| 268 367 | 1 | 19 | 29 | 38 |
| 268 305 | 1¼ | 21 | 30 | 47 |
| 268 329 | 1½ | 21 | 30 | 53 |
| 268 343 | 2 | 26 | 34 | 65 |

AI = Atslēgas izmērs

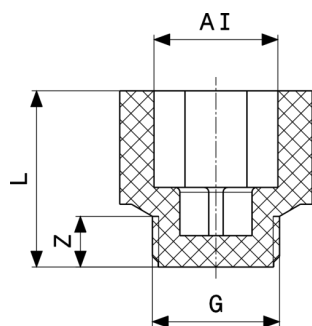


Aizbāznis
- misiņš
modelis 1751

| prece | G | L1 | L2 | AI | Ø |
|-----------------|-------|----|----|----|----|
| 106 676 | 1/8 | 6 | 13 | 9 | 13 |
| 102 173 | 1/4 | 7 | 13 | 9 | 16 |
| 101 756 | 3/8 | 8 | 16 | 12 | 21 |
| 100 797 | 1/2 | 8 | 18 | 12 | 27 |
| 101 626 | 3/4 | 8 | 18 | 14 | 34 |
| 102 883 | 1 | 9 | 18 | 17 | 41 |
| 106 584 | 1 1/2 | 13 | 24 | 22 | 60 |
| 155 735* | 1/8 | 6 | 13 | 9 | 13 |
| 137 649* | 1/4 | 7 | 13 | 9 | 16 |
| 108 472 | 3/8 | 8 | 16 | 12 | 21 |
| 105 099 | 1/2 | 8 | 18 | 12 | 27 |
| 113 797 | 3/4 | 8 | 18 | 14 | 34 |
| 124 465* | 1 | 9 | 18 | 17 | 41 |

AI = Atslēgas izmērs

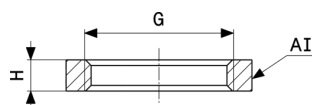
* = piegāde tikai no noliktavas krājumiem



Nospiežams aizbāznis
- plastmasa
modelis 1516.512

| prece | G | Z | L | AI |
|----------------|-----|----|----|----|
| 105 419 | 1/2 | 11 | 37 | 22 |

AI = Atslēgas izmērs

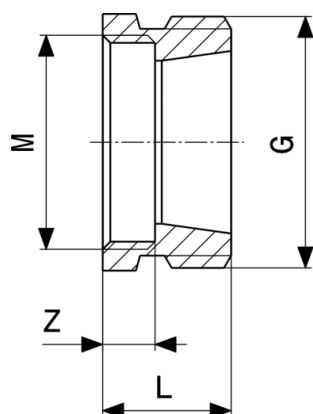


Seštūrzgrieznis
- misiņš
modelis 1911

| prece | G | H | AI |
|-----------------|---|---|----|
| 103 347 | ¾ | 6 | 33 |
| 140 083* | ¼ | 5 | 22 |
| 108 144 | ⅜ | 5 | 25 |
| 108 670 | ½ | 6 | 28 |
| 117 313 | ¾ | 6 | 33 |
| 139 162 | 1 | 6 | 41 |
| 134 945* | 2 | 6 | 70 |

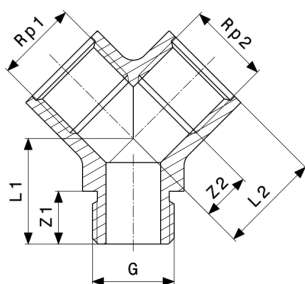
AI = Atslēgas izmērs

* = piegāde tikai no noliktavas krājumiem



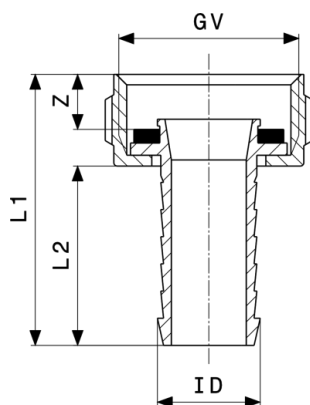
Pārejas nipelis
- bronza vai silīcija bronza
modelis 3251

| prece | G | M | Z | L |
|----------------|----|-------|---|----|
| 448 295 | ¾a | 22x1i | 6 | 14 |



Dubults pieslēguma veidgabals
- misiņš
modelis 1641

| prece | Rp1 | G | Rp2 | Z1 | Z2 | L1 | L2 |
|----------------|-----|---|-----|----|----|----|----|
| 106 881 | ½ | ½ | ½ | 14 | 13 | 27 | 26 |

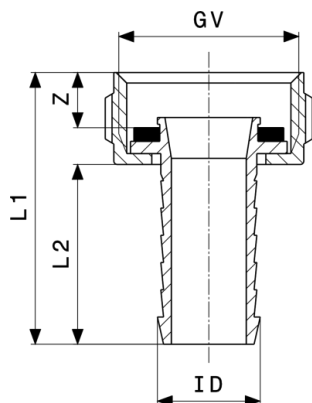


Šļūtenes skrūsavienojums
- misiņš
modelis 1817

| prece | ID | G | Z | L1 | L2 |
|-----------------|----|---|---|----|----|
| 121 723* | ½ | ½ | 6 | 41 | 29 |
| 131 807* | ¾ | ¾ | 7 | 51 | 37 |
| 111 717 | ½ | ½ | 6 | 41 | 29 |
| 114 008 | ¾ | ¾ | 7 | 51 | 37 |
| 124 694 | 1 | 1 | 8 | 52 | 37 |

ID = ID šļūtenei

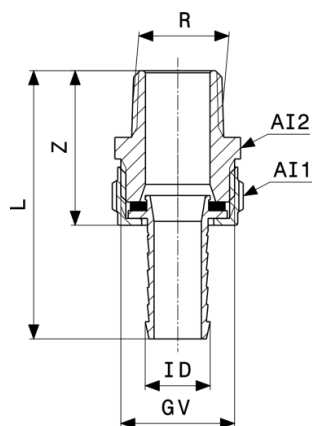
* = piegāde tikai no noliktavas krājumiem



Šļūtenes skrūsvienojums
- misiņš
modelis 1819

| prece | ID | M | Z | L1 | L2 |
|----------------|----|-------|---|----|----|
| 106 843 | ½ | 22x1a | 3 | 36 | 28 |

ID = ID šļūtenei



Stāvcaurules skrūsvienojums
- misiņš
modelis 1831

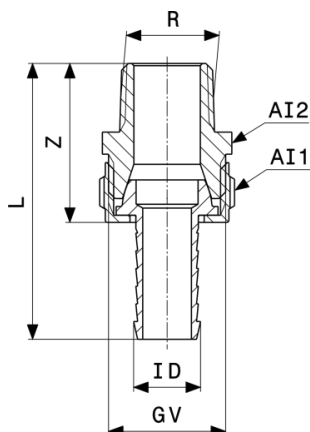
| prece | R | ID | G | Z | L | AI1 | AI2 |
|----------------------------|----|----|----|----|-----|-----|-----|
| 124 878 | ¾ | ¾ | ½ | 32 | 59 | | 22 |
| 105 648 | ½ | ½ | ¾ | 36 | 62 | | 27 |
| 109 707¹ | ¾ | ¾ | 1 | 42 | 76 | | 34 |
| 112 318¹ | 1 | 1 | 1¼ | 47 | 77 | 46 | 44 |
| 123 642¹ | 1¼ | 1¼ | 1½ | 54 | 101 | 52 | 50 |
| 128 739¹ | 1½ | 1½ | 1¾ | 57 | 108 | 55 | 59 |
| 138 653¹ | 2 | 2 | 2¾ | 66 | 118 | 75 | 71 |

ID = ID šļūtenei

AI = Atslēgas izmērs

¹⁾ daudzskaldņu uzgrieznis

* = piegāde tikai no noliktavas krājumiem



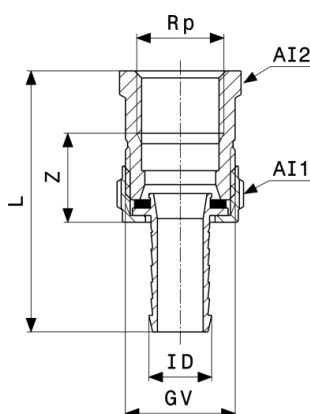
Stāvcaurules skrūsvienojums
- misiņš
modelis 1832

| prece | R | ID | G | Z | L | AI1 | AI2 |
|----------------------------|----|----|----|----|-----|-----|-----|
| 122 416 | ¾ | ¾ | ½ | 30 | 57 | | 22 |
| 104 498 | ½ | ½ | ¾ | 36 | 63 | | 27 |
| 108 816 | ¾ | ¾ | 1 | 41 | 77 | | 34 |
| 110 734¹ | 1 | 1 | 1¼ | 47 | 83 | 46 | 44 |
| 119 454¹ | 1¼ | 1¼ | 1½ | 53 | 100 | 52 | 50 |
| 125 219¹ | 1½ | 1½ | 1¾ | 58 | 110 | 59 | 55 |
| 131 432¹ | 2 | 2 | 2¾ | 68 | 120 | 75 | 71 |

ID = ID šļūtenei

AI = Atslēgas izmērs

¹⁾ daudzskaldņu uzgrieznis



Stāvcaurules skrūsvienojums
- misiņš
modelis 1841

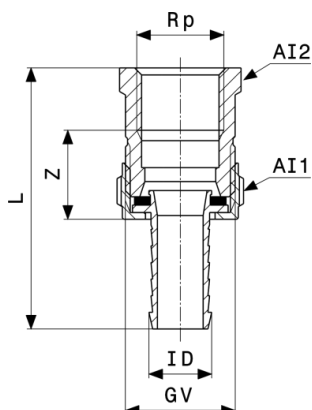
| prece | Rp | ID | G | Z | L | AI1 | AI2 |
|----------------------------|----|----|---|----|----|-----|-----|
| 145 026[*] | ¾ | ¾ | ½ | 18 | 57 | | 22 |
| 119 690[*] | ½ | ½ | ¾ | 21 | 63 | | 27 |
| 126 568¹ | ¾ | ¾ | 1 | 23 | 74 | | 34 |

ID = ID šļūtenei

AI = Atslēgas izmērs

¹⁾ daudzskaldņu uzgrieznis

^{*} = piegāde tikai no noliktavas krājumiem



Stāvcaurules skrūsvienojums
- misiņš
modelis 1841

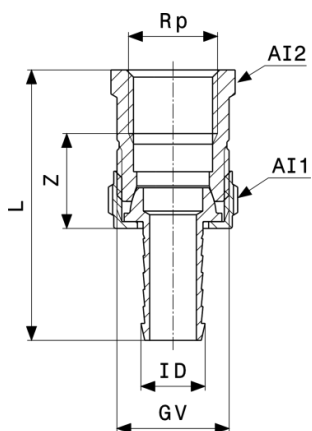
| prece | Rp | ID | G | Z | L | AI1 | AI2 |
|----------------------------|----|----|----|----|----|-----|-----|
| 150 761¹ | 1¼ | 1¼ | 1½ | 26 | 95 | 52 | 50 |

ID = ID šļūtenei

AI = Atslēgas izmērs

¹⁾ daudzskaldņu uzgrieznis

* = piegāde tikai no noliktavas krājumiem



Stāvcaurules skrūsvienojums
- misiņš
modelis 1842

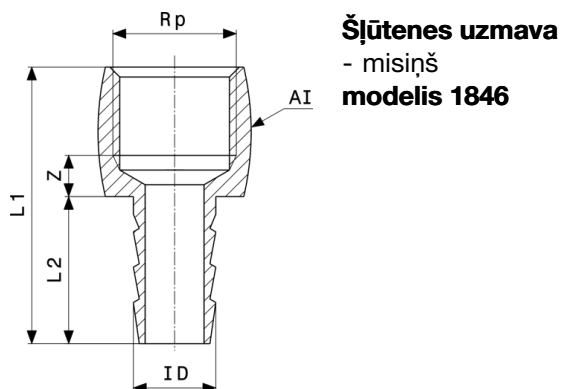
| prece | Rp | ID | G | Z | L | AI1 | AI2 |
|----------------------------|----|----|----|----|----|-----|-----|
| 145 699 | ¾ | ¾ | ½ | 17 | 55 | | 22 |
| 121 013 | ½ | ½ | ¾ | 22 | 64 | | 27 |
| 125 646¹ | ¾ | ¾ | 1 | 23 | 75 | | 34 |
| 127 916¹ | 1 | 1 | 1¼ | 23 | 77 | 46 | 44 |
| 151 232¹ | 1¼ | 1¼ | 1½ | 26 | 94 | 52 | 50 |
| 154 325¹ | 1½ | 1½ | 1¾ | 26 | 98 | 59 | 55 |

ID = ID šļūtenei

AI = Atslēgas izmērs

¹⁾ daudzskaldņu uzgrieznis

* = piegāde tikai no noliktavas krājumiem



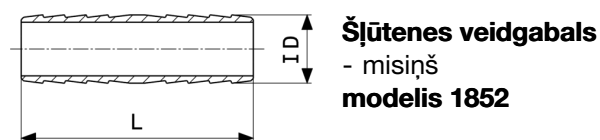
| prece | Rp | ID | Z | L1 | L2 | AI |
|-----------------------------|----|----|---|----|----|----|
| 125 431¹* | ¼ | ¼ | 4 | 40 | 25 | |
| 135 393¹ | ⅝ | ⅝ | 6 | 39 | 21 | 20 |
| 136 185¹ | ½ | ½ | 7 | 47 | 25 | 24 |
| 145 781¹ | ¾ | ¾ | 8 | 50 | 26 | 30 |
| 129 606 | ⅛ | ⅛ | 3 | 36 | 25 | |
| 130 084 | ¼ | ¼ | 4 | 40 | 25 | |
| 112 479¹ | ⅝ | ⅝ | 6 | 39 | 21 | 20 |
| 105 679 | ½ | ½ | 7 | 47 | 25 | 24 |
| 111 106¹ | ¾ | ¾ | 8 | 50 | 26 | 30 |
| 118 105¹ | 1 | 1 | 8 | 58 | 30 | 37 |

ID = ID šļūtenei

AI = Atslēgas izmērs

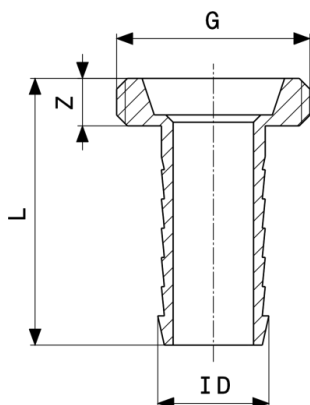
¹⁾ daudzskaldņu

* = piegāde tikai no noliktavas krājumiem



| prece | ID | L |
|----------------|----|----|
| 124 007 | ⅝ | 52 |
| 110 925 | ½ | 48 |
| 108 632 | ¾ | 55 |
| 130 701 | 1 | 62 |

ID = ID šļūtenei

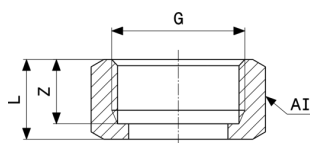


Šļūtenes uzmava
- misiņš
modelis 1822-260

| prece | G | ID | Z | L |
|-----------------|---|----|---|----|
| 132 767 | ½ | ¾ | 7 | 37 |
| 118 518 | ¾ | ½ | 7 | 37 |
| 124 243* | 1 | ¾ | 8 | 46 |

ID = ID šļūtenei

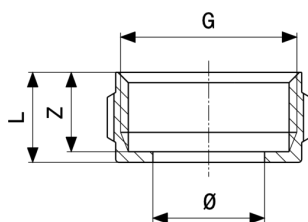
* = piegāde tikai no noliktavas krājumiem



Uzmavuzgrieznis
- misiņš
modelis 1121-654

| prece | G | d | Z | L | AI |
|----------------|----|------|----|----|----|
| 110 208 | ½ | 16,7 | 10 | 12 | 23 |
| 107 895 | ¾ | 22 | 12 | 15 | 29 |
| 105 709 | 1 | 26,8 | 13 | 16 | 36 |
| 103 811 | 1¼ | 33,8 | 14 | 17 | 46 |
| 115 531 | 1½ | 42,4 | 15 | 18 | 52 |
| 119 492 | 2 | 50,5 | 19 | 22 | 65 |

AI = Atslēgas izmērs



Uzmavuzgrieznis
- misiņš
modelis 1811-654

| prece | G | Z | L | Ø |
|-----------------------------|---|----|----|----|
| 118 860 | ½ | 10 | 12 | 13 |
| 110 185 | ¾ | 12 | 14 | 17 |
| 117 085¹⁾ | 1 | 13 | 16 | 23 |

¹⁾ daudzskaldņu

Uzņēmuma dati

Viega GmbH & Co. KG

Viega Platz 1

57439 Attendorn

Germany

Phone: +49/2722/61-0

Fax: +49/2722/61-1566

The Viega GmbH & Co. KG is represented by the general partners: Viega Management B.V. (Managing directors: Michael Klenz, Sebastian Lelgemann) and Viega Management GmbH (Managing directors: Michael Klenz, Sebastian Lelgemann)

Submittal Package ir nesaistoša informācija, kas tiek nodota Jūsu rīcībā. Viss Submittal Package saturs tiek sastādīts ar īpašu rūpību. Tomēr nav iespējams garantēt, ka informācija ir aktuāla, pareiza un pilnīga. Veicot pasūtījumu, Submittal Package nekļūst par līguma sastāvdaļu.